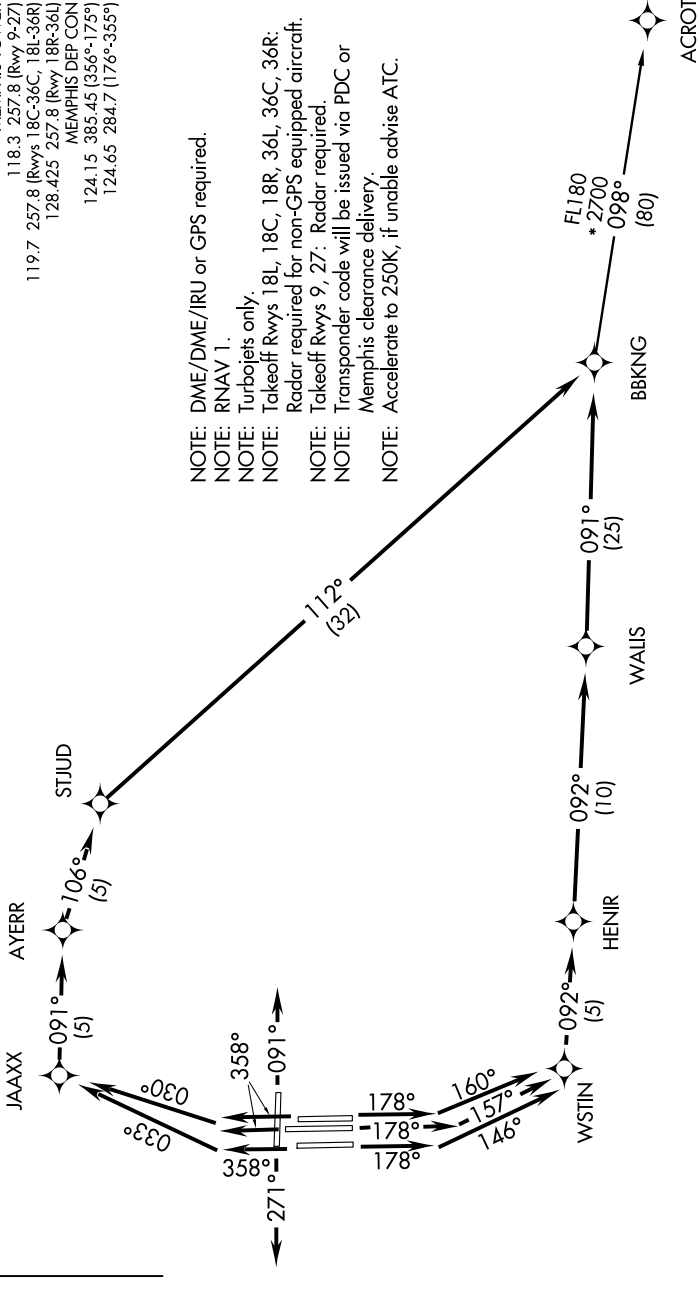


BBKNG ONE DEPARTURE (RNAV)

SE-1, 07 FEB 2013 to 07 MAR 2013

- ATIS 127.75
- CINC DEL 125.2
- GND CON 121.0 379.2 (Rwy 9-27)
- 121.9 379.2 (Rwys 18C-36C, 18I-36R)
- 121.65 379.2 (Rwy 18R-36L)
- MEMPHIS TOWER 118.3 257.8 (Rwy 9-27)
- 119.7 257.8 (Rwys 18C-36C, 18I-36R)
- 128.425 257.8 (Rwy 18R-36L)
- MEMPHIS DEP CON 124.15 385.45 (356°-175°)
- 124.65 284.7 (176°-355°)

TAKEOFF MINIMUMS:
Rwys 9, 18L, 18C, 18R, 27, 36L, 36C, 36R: Standard with minimum climb of 500' per NIM to 860.



(NARRATIVE ON FOLLOWING PAGE)

NOTE: Chart not to scale.

SE-1, 07 FEB 2013 to 07 MAR 2013

BBKNG ONE DEPARTURE (RNAV)