

WAAS CH 60901 W09B	APP CRS 094°	Rwy Idg 10181 THRE 32 Apt Elev 33
--	------------------------	--

RNAV (GPS) RWY 9R

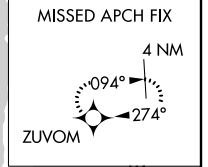
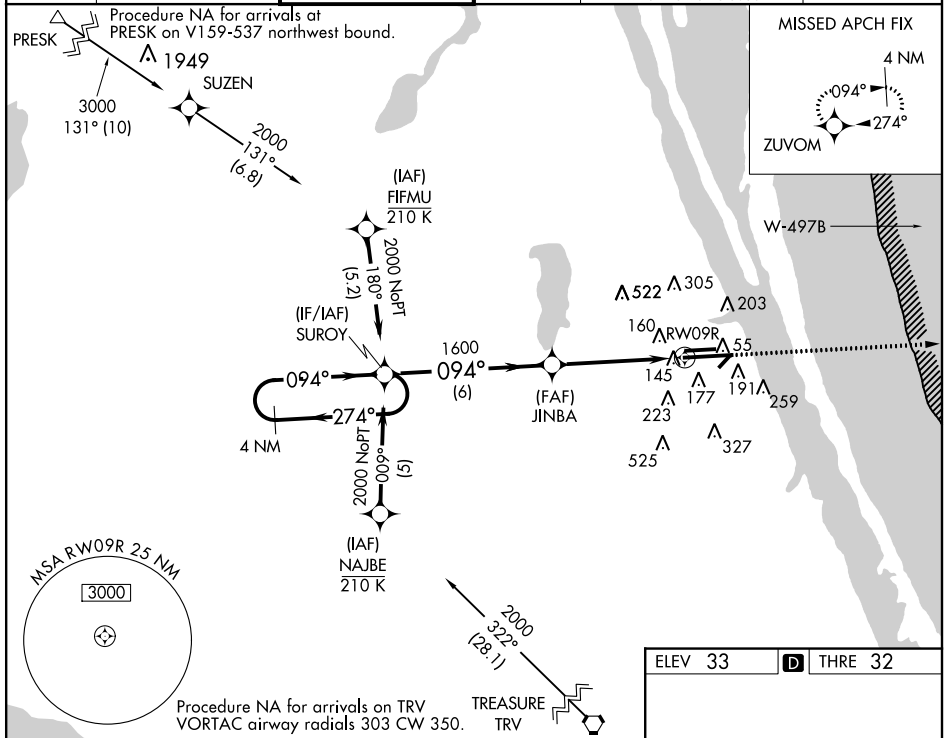
MELBOURNE INTL (MLB)

▼ For uncompensated Baro-VNAV systems, LNAV/VNAV NA below -1.5°C (5°F) or above 54°C (130°F). For operative MALS, increase LNAV Cat C and D visibility to RVR 6000. DME/DME RNP-0.3 NA.



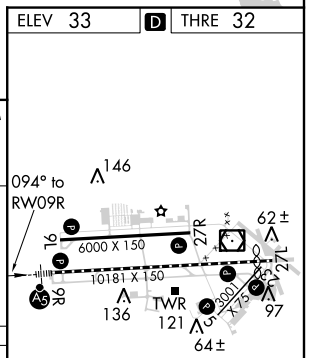
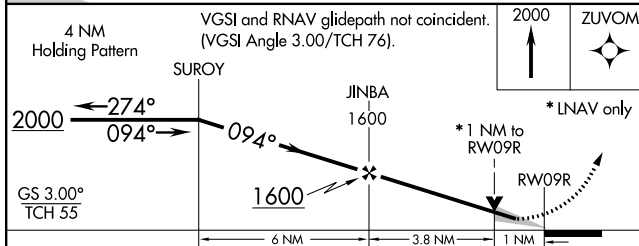
MISSED APPROACH: Climb to 2000 direct ZUVOM and hold.

ATIS 132.55	ORLANDO APP CON 132.65 281.425	MELBOURNE TOWER ★ 118.2 (CTAF) 257.8	GND CON 121.9	CLNC DEL 121.9 132.65* * when tower closed	UNICOM 122.95
-----------------------	--	--	-------------------------	---	-------------------------



SE-3, 07 FEB 2013 to 07 MAR 2013

SE-3, 07 FEB 2013 to 07 MAR 2013



CATEGORY	A	B	C	D
LPV DA	232/24		200 (200-½)	
LNAV/VNAV DA	427/40		395 (400-¾)	
LNAV MDA	400/24 368 (400-½)		400/35 368 (400-¾)	
CIRCLING	500-1 467 (500-1)	520-1 487 (500-1)	520-1½ 487 (500-1½)	620-2 587 (600-2)