

WAAS CH 65601 W09A	APP CRS 094°	Rwy Idg THRE 6000 Apt Elev 33
--	------------------------	---

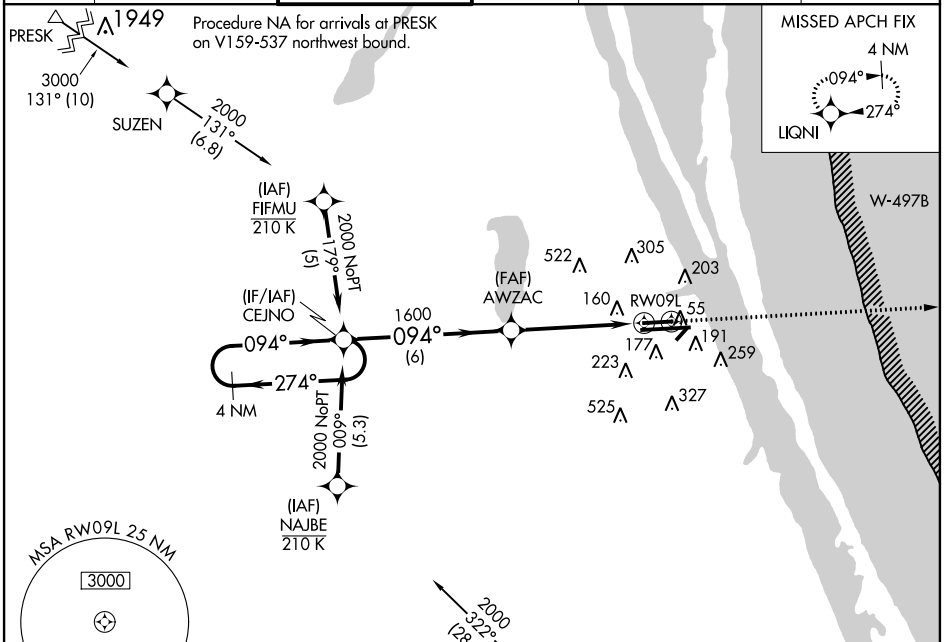
RNAV (GPS) RWY 9L

MELBOURNE INTL (MLB)

▼ For uncompensated Baro-VNAV systems, LNAV/VNAV NA below -15°C (5°F) or above 54°C (130°F). DME/DME RNP-0.3 NA. Visibility reduction by helicopters NA.

MISSED APPROACH: Climb to 2000 direct LIQNI and hold.

ATIS 132.55	ORLANDO APP CON 132.65 281.425	MELBOURNE TOWER * 118.2 (CTAF) 257.8	GND CON 121.9	CLNC DEL 121.9 132.65* * when tower closed	UNICOM 122.95
-----------------------	--	--	-------------------------	---	-------------------------



4NM Holding Pattern

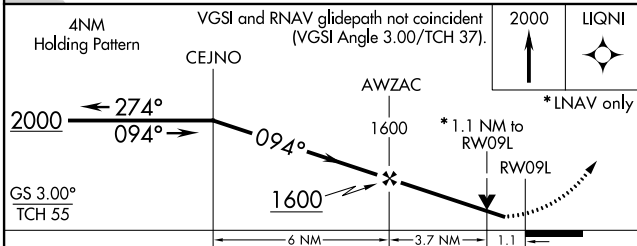
VGSI and RNAV glidepath not coincident (VGSI Angle 3.00/TCH 37).

2000 LIQNI

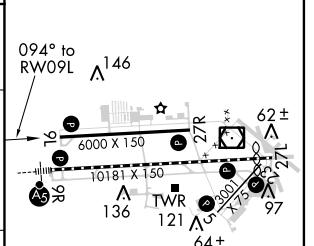
GS 3.00° TCH 55

* 1.1 NM to RW09L

* LNAV only



ELEV 33	D	THRE 31
---------	---	---------



CATEGORY	A	B	C	D
LPV DA		281-3/4	250 (300-3/4)	
LNAV/VNAV DA		465-13/8	434 (500-13/8)	
LNAV MDA	420-1	389 (400-1)	420-1 1/8	389 (400-1 1/8)
CIRCLING	500-1 467 (500-1)	520-1 487 (500-1)	520-1 1/2 487 (500-1 1/2)	620-2 587 (600-2)

REIL Rwy 27L

HIRL Rwy 9R-27L

MIRL Rwy 5-23 and 9L-27R

TDZ/CL Rwy 9R

SE-3, 07 FEB 2013 to 07 MAR 2013

SE-3, 07 FEB 2013 to 07 MAR 2013