

WAAS CH <b>56201</b> <b>W27B</b>	APP CRS <b>274°</b>	Rwy Idg THRE Apt Elev	<b>9481</b> <b>22</b> <b>33</b>
--	------------------------	-----------------------------	---------------------------------------

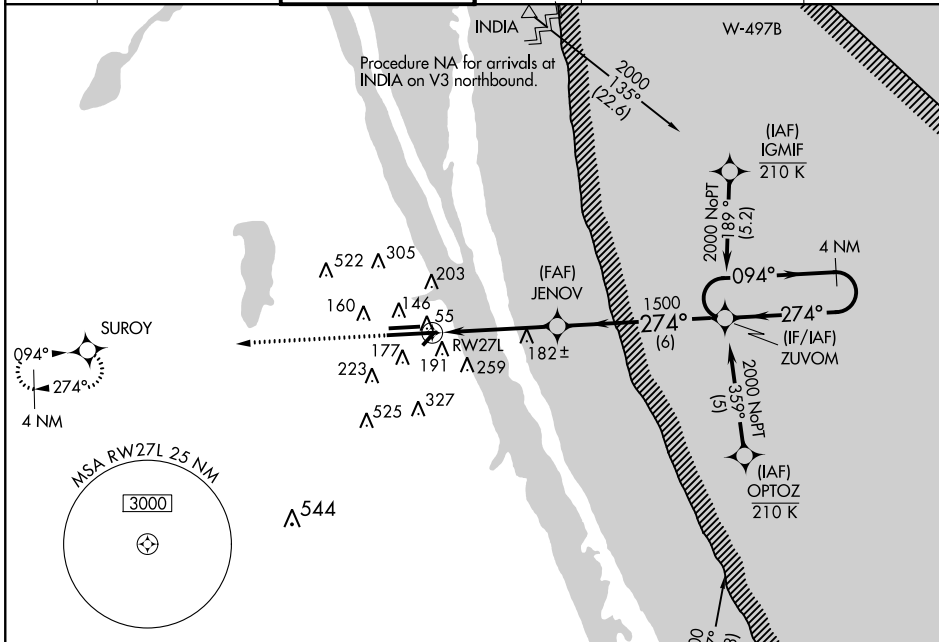
# RNAV (GPS) RWY 27L

MELBOURNE INTL (MLB)

▼ For uncompensated Baro-VNAV systems, LNAV/VNAV NA below -1.5°C (5°F) or above above 54°F (130°F). DME/DME RNP-0.3 NA.

MISSED APPROACH: Climb to 2000 direct SUROY and hold.

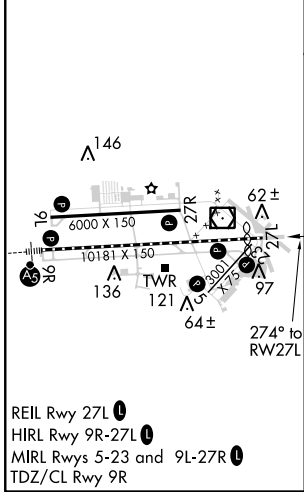
ATIS <b>132.55</b>	ORLANDO APP CON <b>132.65 281.425</b>	MELBOURNE TOWER ★ <b>118.2 (CTAF) 0 257.8</b>	GND CON <b>121.9</b>	CLNC DEL <b>121.9 132.65 *</b> * when tower closed	UNICOM <b>122.95</b>
-----------------------	--	--	-------------------------	--	-------------------------



SE-3, 07 FEB 2013 to 07 MAR 2013

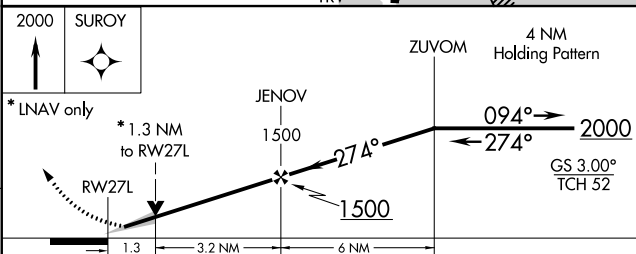
SE-3, 07 FEB 2013 to 07 MAR 2013

ELEV 33	<b>D</b>	THRE 22
---------	----------	---------



2000 SUROY

ZUVOM 4 NM Holding Pattern



CATEGORY	A	B	C	D
LPV DA		222-3/4	200 (200-3/4)	
LNAV/VNAV DA		314-7/8	292 (300-7/8)	
LNAV MDA	500-1	478 (500-1)	500-1 3/8	478 (500-1 3/8)
CIRCLING	500-1 467 (500-1)	520-1 487 (500-1)	520-1 1/2 487 (500-1 1/2)	620-2 587 (600-2)