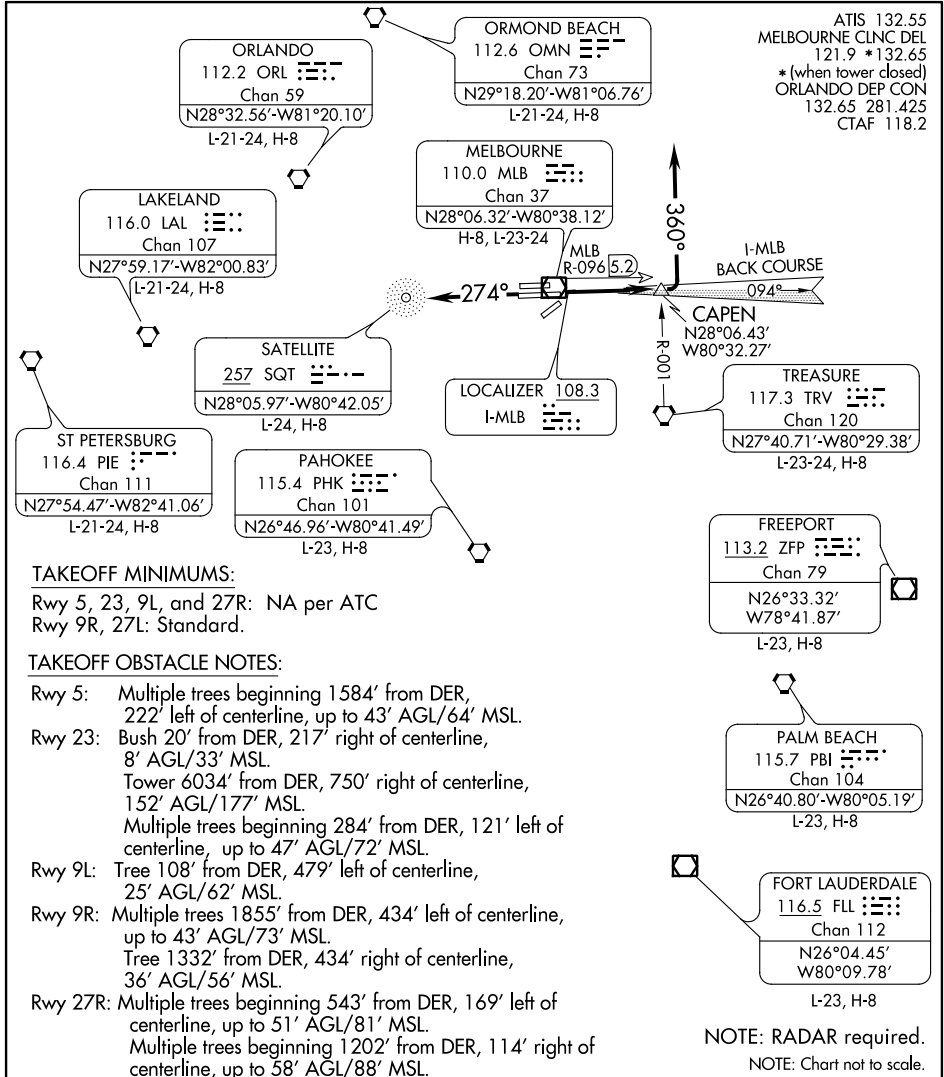


# MELBOURNE FOUR DEPARTURE



SE-3, 07 FEB 2013 to 07 MAR 2013

SE-3, 07 FEB 2013 to 07 MAR 2013

### TAKEOFF MINIMUMS:

Rwy 5, 23, 9L, and 27R: NA per ATC  
Rwy 9R, 27L: Standard.

### TAKEOFF OBSTACLE NOTES:

- Rwy 5: Multiple trees beginning 1584' from DER, 222' left of centerline, up to 43' AGL/64' MSL.
- Rwy 23: Bush 20' from DER, 217' right of centerline, 8' AGL/33' MSL.  
Tower 6034' from DER, 750' right of centerline, 152' AGL/177' MSL.  
Multiple trees beginning 284' from DER, 121' left of centerline, up to 47' AGL/72' MSL.
- Rwy 9L: Tree 108' from DER, 479' left of centerline, 25' AGL/62' MSL.
- Rwy 9R: Multiple trees 1855' from DER, 434' left of centerline, up to 43' AGL/73' MSL.  
Tree 1332' from DER, 434' right of centerline, 36' AGL/56' MSL.
- Rwy 27R: Multiple trees beginning 543' from DER, 169' left of centerline, up to 51' AGL/81' MSL.  
Multiple trees beginning 1202' from DER, 114' right of centerline, up to 58' AGL/88' MSL.

NOTE: RADAR required.  
NOTE: Chart not to scale.

### DEPARTURE ROUTE DESCRIPTION

**TAKEOFF RUNWAY 9R:** Climb on MLB VOR/DME R-096 to CAPEN INT/MLB VOR/DME, 5.2 DME, then turn left heading 360°. Thence. . . .

**TAKEOFF RUNWAY 27L:** Climb heading 274°, Thence. . . .

. . . . All aircraft expect radar vectors to join assigned route. Maintain 5000 or assigned altitude. Expect clearance to filed altitude/flight level 10 minutes after departure.