

APP CRS	Rwy Idg	8800
323°	TDZE	1335
	Apt Elev	1335

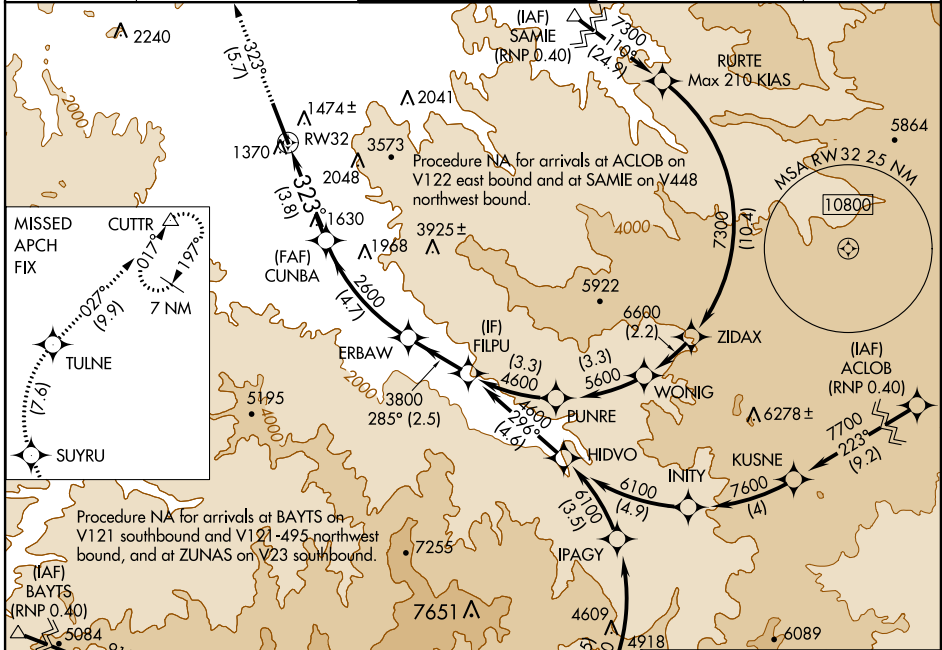
RNAV (RNP) RWY 32

MEDFORD/ ROGUE VALLEY INTL-MEDFORD (MFR)

GPS required. RF required. For uncompensated Baro-VNAV systems, procedure NA below -8°C (17°F) or above 45°C (113°F).

MISSED APPROACH: Climb to 9000 on track 323° to SUYRU, right turn to TULNE, then on track 027° to CUTTR and hold, continue climb-in-hold to 9000.

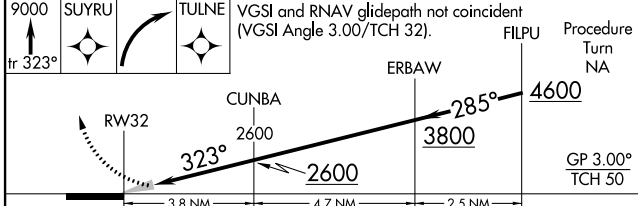
ATIS 127.25	CASCADE APP CON* 124.3 379.9	MEDFORD TOWER* 119.4 (CTAF) 0 257.8	GND CON 121.8	UNICOM 122.95
-----------------------	--	---	-------------------------	-------------------------



NW-1, 07 FEB 2013 to 07 MAR 2013

NW-1, 07 FEB 2013 to 07 MAR 2013

ELEV 1335	D	TDZE 1335
-----------	----------	-----------



CATEGORY	A	B	C	D
RNP 0.15 DA		1609-1	274 (300-1)	
RNP 0.30 DA		1661-1	326 (400-1)	

AUTHORIZATION REQUIRED

