

APP CRS	Rwy Idg	N/A
328°	TDZE	N/A
	Apt Elev	1335

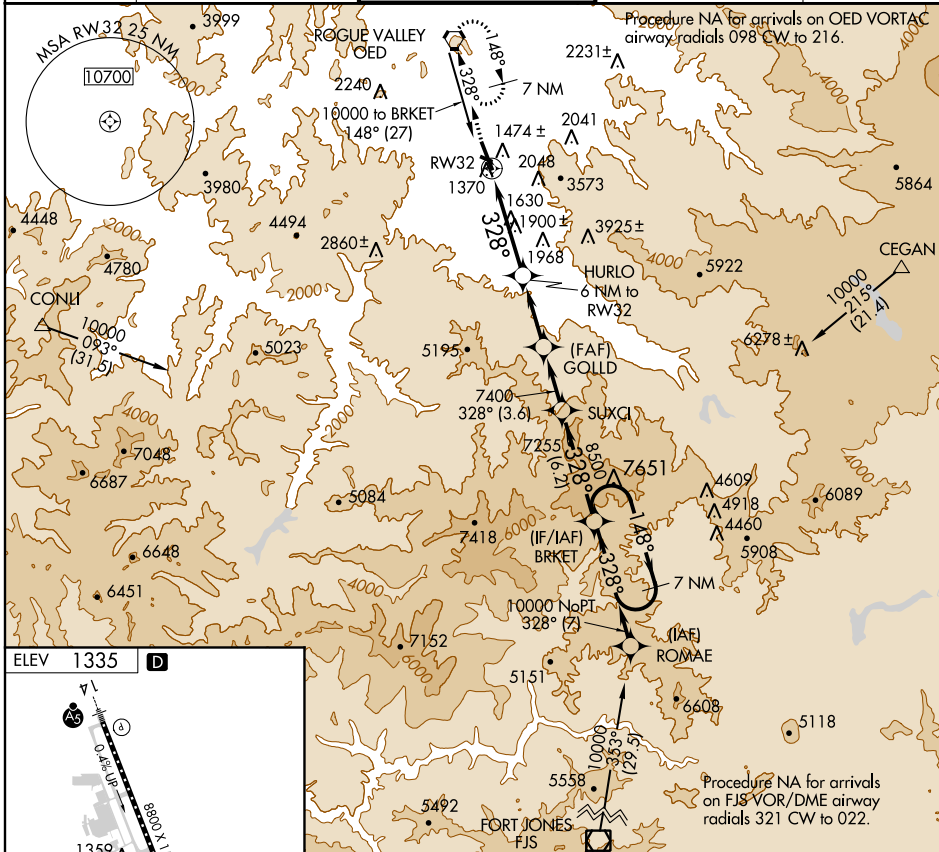
# RNAV (GPS)-D

MEDFORD/ROGUE VALLEY INTL-MEDFORD (MFR)

**⚠** Circling to Rwy 10 NA at night. DME/DME RNP-0.3 NA.  
**⚠** Visibility reduction by helicopters NA.  
 When local climeter setting not received, procedure NA.

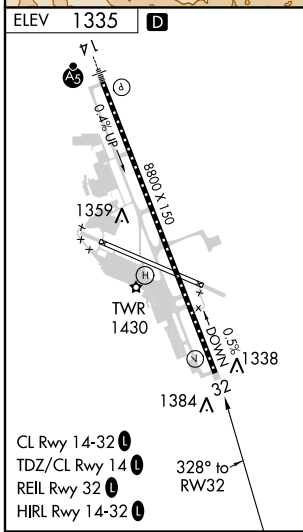
MISSED APPROACH: Climb to 7800 direct OED VORTAC and hold, continue climb-in-hold to 7800.

ATIS <b>127.25</b>	CASCADE APP CON * <b>124.3 379.9</b>	MEDFORD TOWER * <b>119.4 (CTAF) 0 257.8</b>	GND CON <b>121.8</b>	UNICOM <b>122.95</b>
-----------------------	---	--	-------------------------	-------------------------



NW-1, 07 FEB 2013 to 07 MAR 2013

NW-1, 07 FEB 2013 to 07 MAR 2013



7800	OED	VGS1 and descent angles not coincident (VGS1 Angle 3.00/TCH 32).		7 NM Holding Pattern
↑		HURLO 6 NM to RW32	GOLDD	SUXCI
		BRKET	148° →	← 328° 10000
		328°	8500	
		6.90° TCH 55	7400	
		6 NM	4 NM	3.6 NM
		6.2 NM		
CATEGORY	A	B	C	D
CIRCLING	3600-1¼ 2265 (2300-1¼)	3600-1½ 2265 (2300-1½)	3600-3	2265 (2300-3)