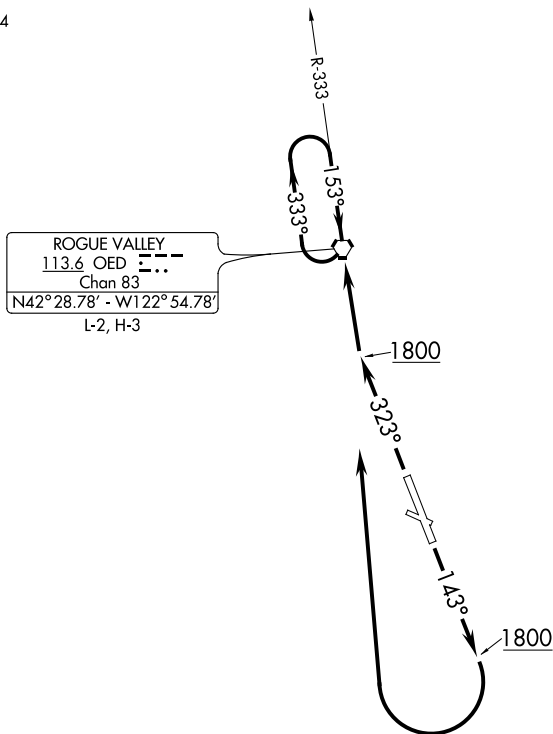


ATIS 127.25
GND CON
121.8
CASCADE DEP CON ★
124.3 379.9
SEATTLE CENTER
124.85
CTAF 119.4



NW-1, 07 FEB 2013 to 07 MAR 2013

NW-1, 07 FEB 2013 to 07 MAR 2013

TAKE-OFF MINIMUMS

Rwy 10, 28, NA- obstacles.

Rwy 14, Standard with minimum climb of 430' per NM to 4600.

Rwy 32, Standard with minimum climb of 300' per NM to 6800.

NOTE: Chart not to scale.



DEPARTURE ROUTE DESCRIPTION

TAKE-OFF RUNWAY 14: Climb heading 143° to 1800 then right turn, thence. . . .

TAKE-OFF RUNWAY 32: Climb heading 323° to 1800, thence. . . .

. . . . climb direct OED VORTAC, continue climb in OED VORTAC holding pattern to at or above 7000' before proceeding on course.