

LOC/DME I-MFR 110.3 Chan 40	APP CRS 143°	Rwy Idg TDZE Apt Elev	8800 1303 1335
--	------------------------	-----------------------------	---

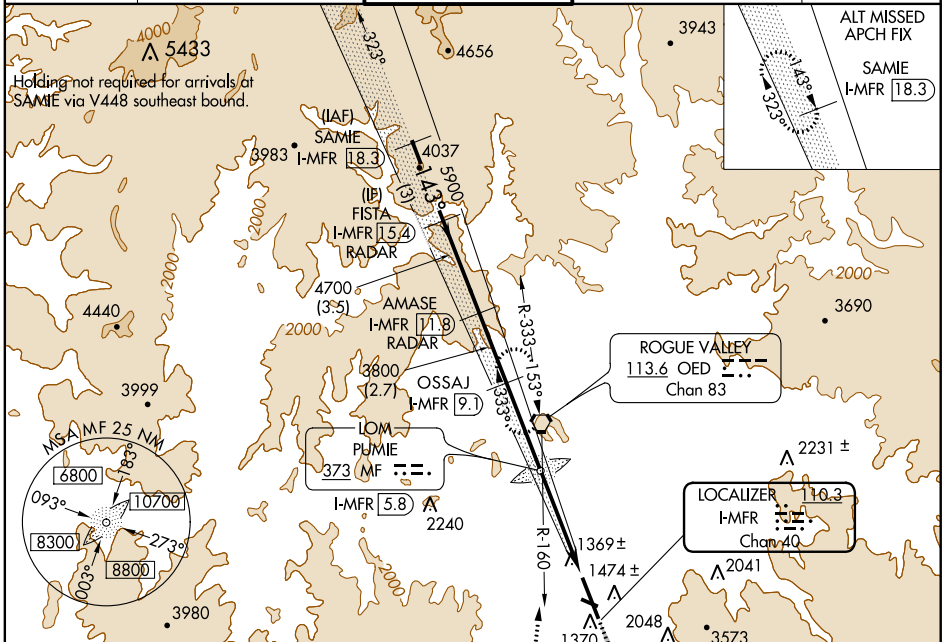
ILS or LOC/DME RWY 14

MEDFORD/ ROGUE VALLEY INTL-MEDFORD (MFR)

▼ When Medford altimeter setting not received, procedure NA.
 ▲ For inoperative MALS, increase S-ILS 14 all Cats visibility to 2¼.
 % Missed approach requires minimum climb of 319 feet per NM to 4100. DME required. Circling NA at night for Rwy 10.

MALS R MISSED APPROACH: Climb to 6400 via I-MFR SE course to JILOK/I-MFR 1.6 DME and climbing right turn on heading 350 and OED VORTAC R-160 to OED VORTAC and hold, continue climb-in-hold to 6400.

ATIS 127.25	CASCADE APP CON* 124.3 379.9	MEDFORD TOWER* 119.4 (CTAF) 0257.8	GND CON 121.8	UNICOM 122.95
-----------------------	--	--	-------------------------	-------------------------

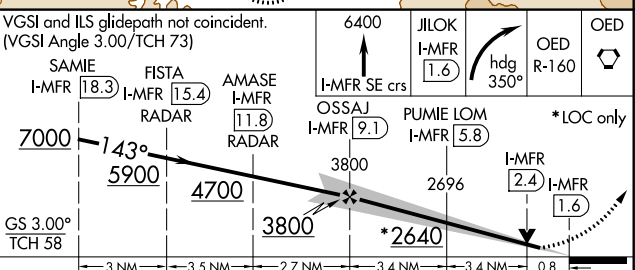
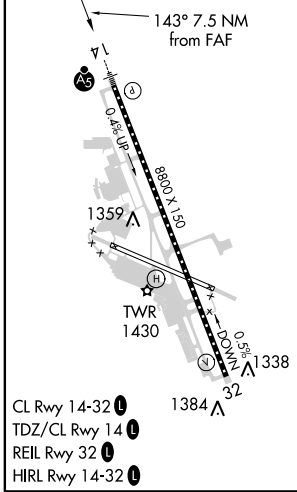


NW-1, 07 FEB 2013 to 07 MAR 2013

NW-1, 07 FEB 2013 to 07 MAR 2013

ELEV 1335	D	TDZE 1303
-----------	----------	-----------

DME or RADAR REQUIRED



CATEGORY	A	B	C	D
S-ILS 14 %		1503/18	200 (200-½)	
S-ILS 14		1936-1¾	633 (700-1¾)	
S-LOC 14 %		1620/24	317 (300-½)	
S-LOC 14	2080/24 777 (800-½)	2080/40 777 (800-¾)	2080-1¾ 777 (800-1¾)	2080-2 777 (800-2)
CIRCLING	2080-1 745 (800-1)	2080-1¼ 745 (800-1¼)	2080-2¼ 745 (800-2¼)	2260-3 925 (1000-3)