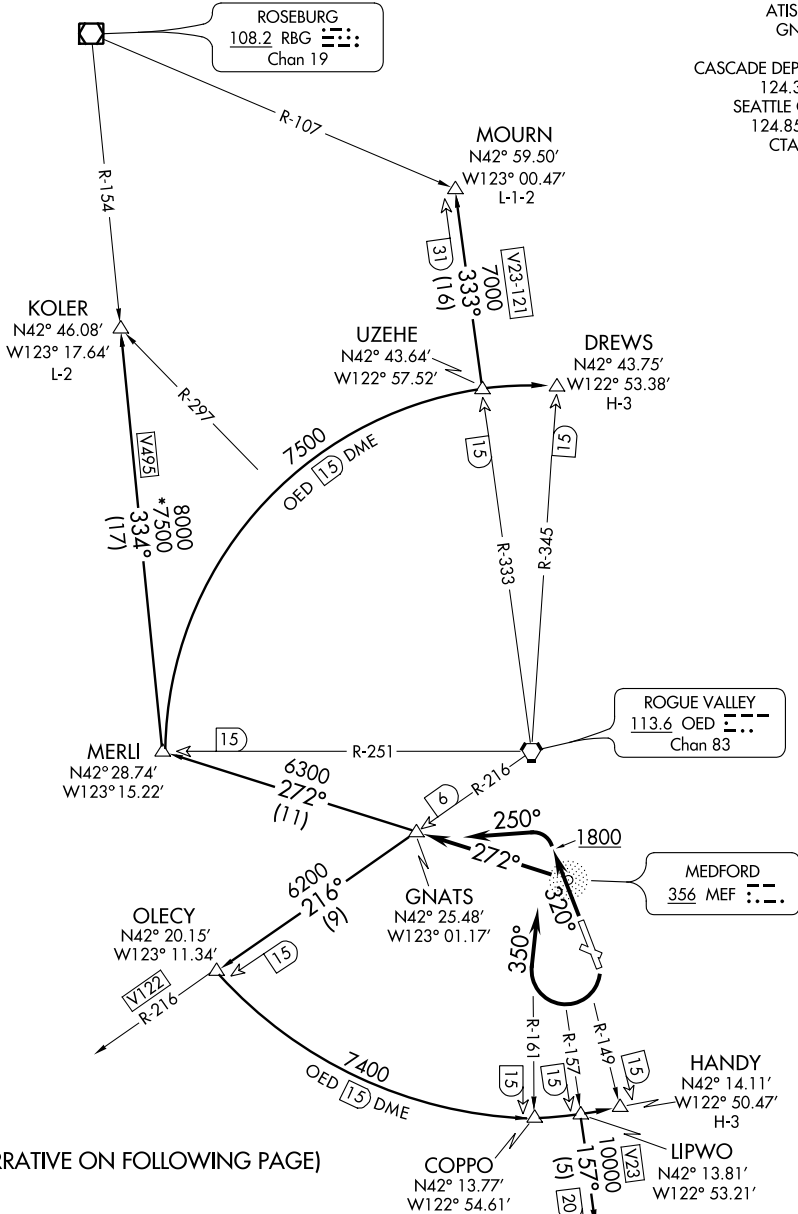


(GNATS5.GNATS) 12040
GNATS FIVE DEPARTURE

MEDFORD/ROGUE VALLEY INTL-MEDFORD (MFR)
 L-251 (FAA)
 MEDFORD, OREGON



ATIS 127.25
 GND CON 121.8
 CASCADE DEP CON * 124.3 379.9
 SEATTLE CENTER 124.85 306.3
 CTAF 119.4

NW-1, 07 FEB 2013 to 07 MAR 2013

NW-1, 07 FEB 2013 to 07 MAR 2013

(NARRATIVE ON FOLLOWING PAGE)

TAKEOFF MINIMUMS

- Rwy 9, 27, NA- obstacle.
- Rwy 32, Standard with minimum climb of 400' per NM to 6800.
- Rwy 14, Standard with minimum climb of 430' per NM to 4600.

NOTE: Chart not to scale.

(GNATS5.GNATS) 12040
GNATS FIVE DEPARTURE

MEDFORD, OREGON
 MEDFORD/ROGUE VALLEY INTL-MEDFORD (MFR)