

BRUTE FIVE DEPARTURE

MEDFORD/ROGUE VALLEY INTL-MEDFORD (MF'R)
SL-251 (FAA) MEDFORD, OREGON

ATIS 127.25
GND CON 121.8
MEDFORD TOWER * 119.4 (CTAF) 257.8
CASCADE DEP CON * 124.3 379.9
SEATTLE CENTER 124.85 306.3

NOTE: DME required.

TAKE-OFF MINIMUMS

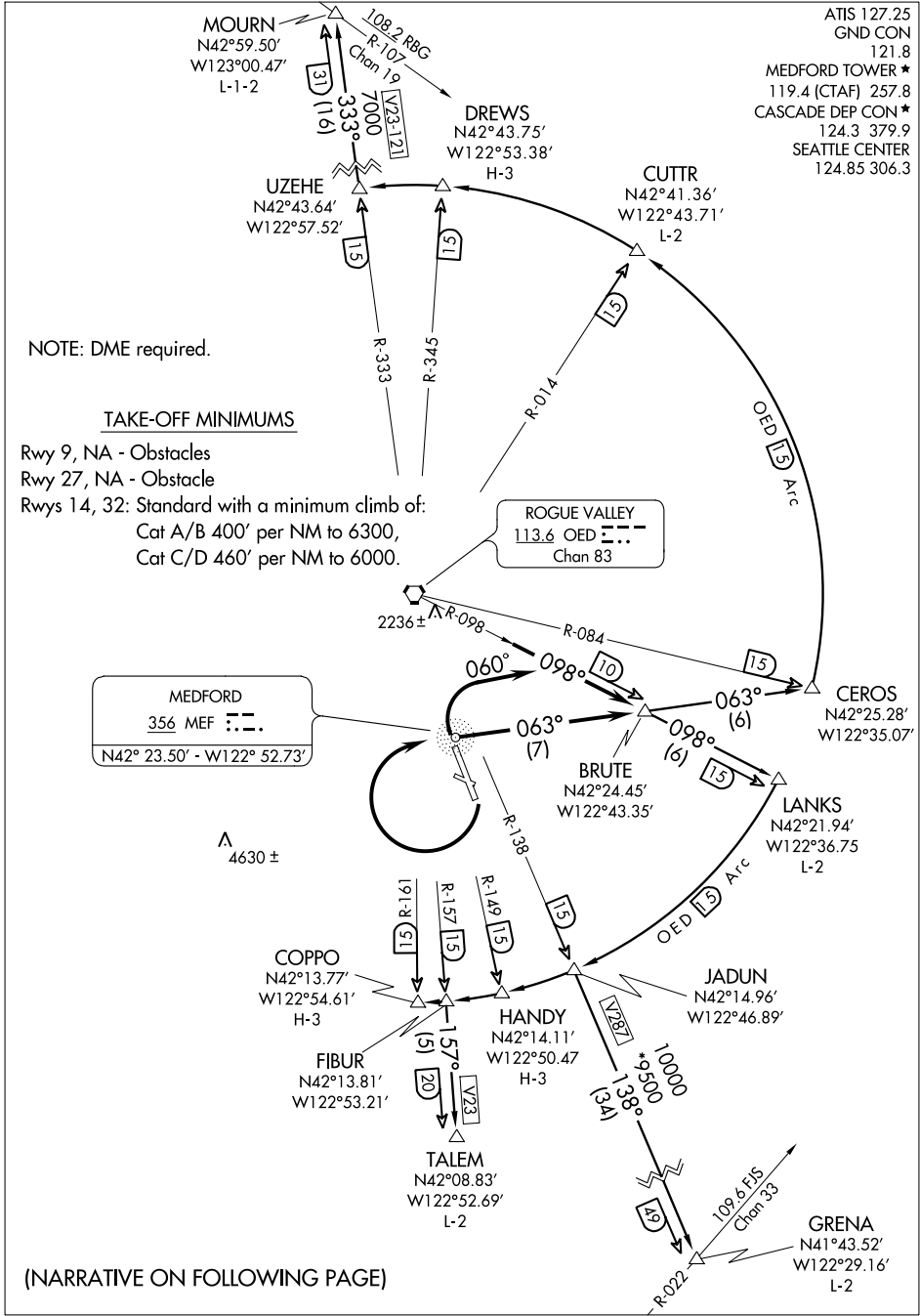
Rwy 9, NA - Obstacles
Rwy 27, NA - Obstacle
Rwys 14, 32: Standard with a minimum climb of:
Cat A/B 400' per NM to 6300,
Cat C/D 460' per NM to 6000.

MEDFORD
356 MEF
N42° 23.50' - W122° 52.73'

ROGUE VALLEY
113.6 OED
Chan 83

NW-1, 07 FEB 2013 to 07 MAR 2013

NW-1, 07 FEB 2013 to 07 MAR 2013



(NARRATIVE ON FOLLOWING PAGE)