

CEDAR RAPIDS, IOWA

AL-250 (FAA)

13010

VOR/DME CID <b>114.1</b> Chan <b>88</b>	APP CRS <b>089°</b>	Rwy Idg <b>8175</b> TDZE <b>857</b> Apt Elev <b>869</b>
---	------------------------	---

# VOR/DME RWY 9

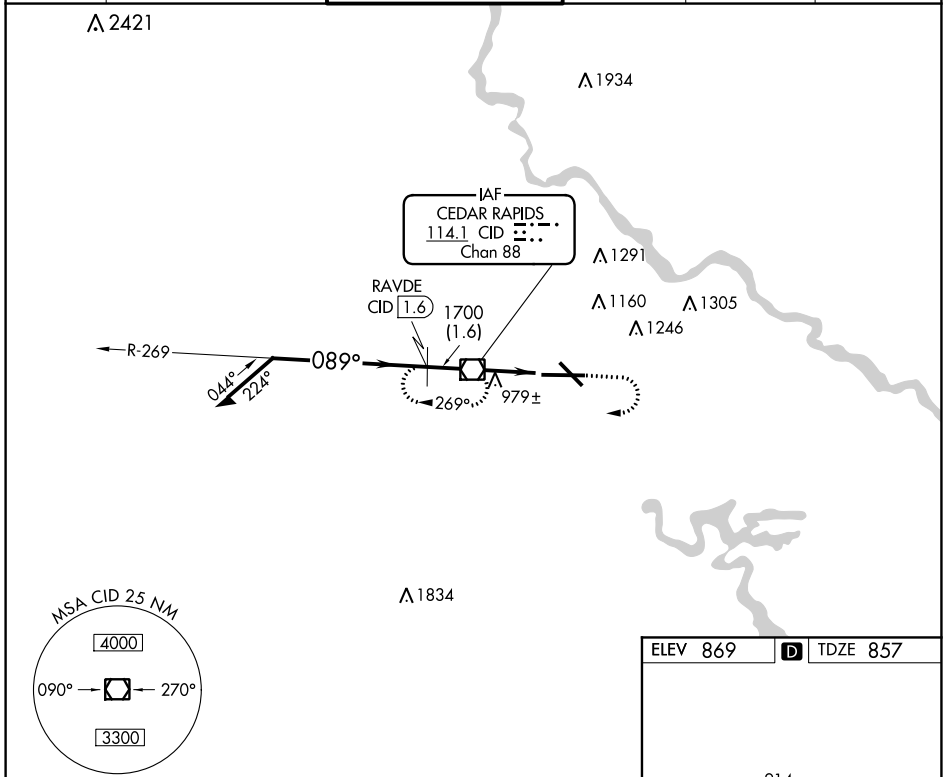
CEDAR RAPIDS/ THE EASTERN IOWA (CID)

**⚠** For inoperative MALSR increase S-9 Cat D visibility to RVR 6000. When local altimeter setting not received use Iowa City altimeter setting and increase all MDA 80 feet; increase S-9 Cat C visibility to RVR 4000. VDP NA with Iowa City altimeter setting.

**MALSR**  
AS

**MISSED APPROACH:** Climb to 3000 then right turn direct CID VOR/DME and hold.

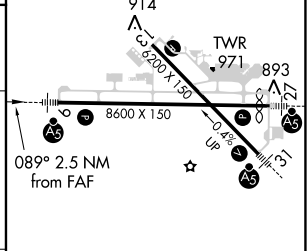
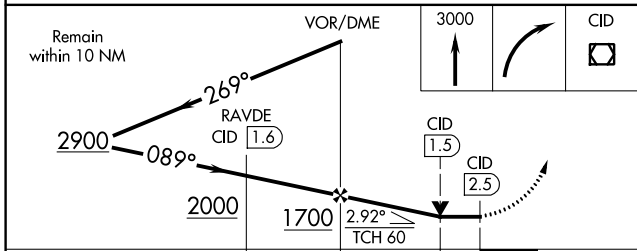
ATIS <b>124.15</b>	CEDAR RAPIDS APP CON * <b>119.7 266.8</b>	CEDAR RAPIDS TOWER * <b>118.7 (CTAF) 0 266.8</b>	GND CON <b>121.6</b>	CLNC DEL <b>125.45</b>	UNICOM <b>122.95</b>
-----------------------	--	---	-------------------------	---------------------------	-------------------------



NC-3, 07 FEB 2013 to 07 MAR 2013

NC-3, 07 FEB 2013 to 07 MAR 2013

ELEV 869	<b>D</b> TDZE 857
----------	-------------------



CATEGORY	A	B	C	D
S-9	1240/24 383 (400-½)			1240/50 383 (400-1)
CIRCLING	1280-1 411 (500-1)	1320-1 451 (500-1)	1320-1½ 451 (500-1½)	1420-2 551 (600-2)

MIRL Rwy 13-31 **Ⓛ**  
HIRL Rwy 9-27 **Ⓛ**  
REIL Rwy 13

CEDAR RAPIDS, IOWA  
Amdt 17A 13JAN11

41°53'N-91°43'W

# CEDAR RAPIDS/ THE EASTERN IOWA (CID) VOR/DME RWY 9