

CEDAR RAPIDS, IOWA


AL-250 (FAA)

VOR RWY 27

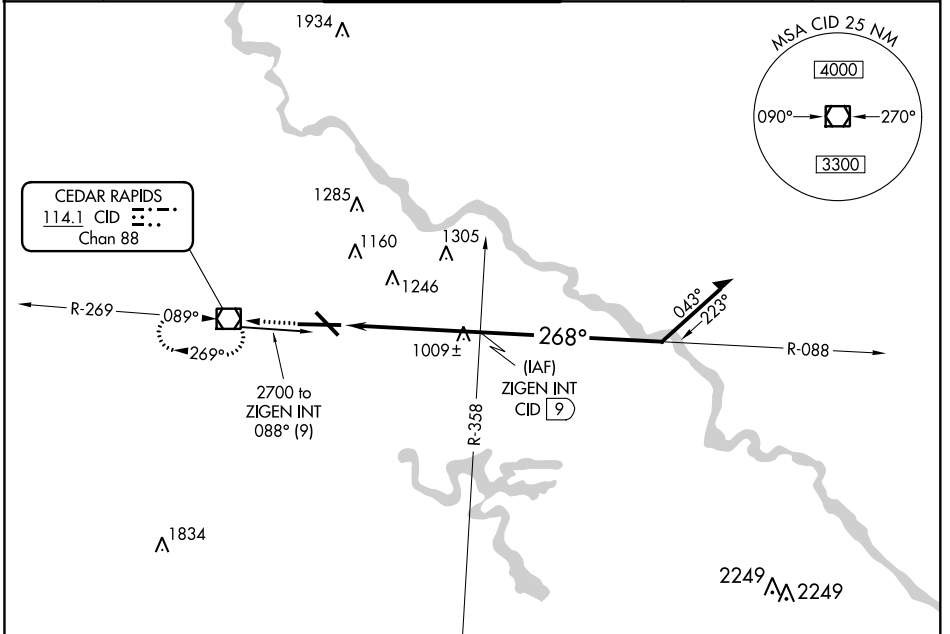
CEDAR RAPIDS/ THE EASTERN IOWA (CID)

VOR/DME CID 114.1 Chan 88	APP CRS 268°	Rwy Idg 8175 TDZE 862 Apt Elev 869
---	------------------------	---

▼ If local altimeter setting not received, use Iowa City altimeter setting and increase all MDAs 80 feet.
▲ For inoperative MALSR increase S-27 Cat. D visibility to RVR 6000. VDP NA with Iowa City altimeter setting.

MALSR

MISSED APPROACH: Climb to 2900 direct CID VOR/DME and hold, continue climb-in-hold to 2900.

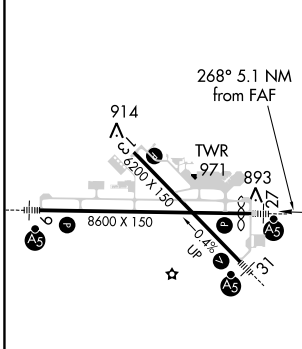
ATIS 124.15	CEDAR RAPIDS APP CON* 119.7 266.8	CEDAR RAPIDS TOWER* 118.7 (CTAF) 266.8	GND CON 121.6	CLNC DEL 125.45	UNICOM 122.95
-----------------------	---	--	-------------------------	---------------------------	-------------------------



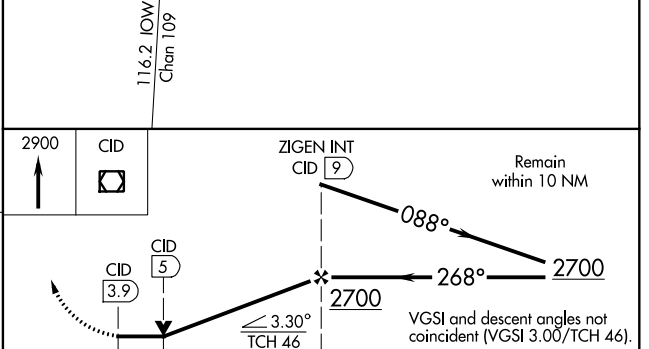
NC-3, 07 FEB 2013 to 07 MAR 2013

NC-3, 07 FEB 2013 to 07 MAR 2013

ELEV 869	D	TDZE 862
----------	----------	----------



MIRL Rwy 13-31 1					
HIRL Rwy 9-27 1					
REIL Rwy 13					
FAF to MAP 5.1 NM					
Knots	60	90	120	150	180
Min:Sec	5:06	3:24	2:33	2:02	1:42



CATEGORY	A	B	C	D
S-27	1260/24 398 (400-1/2)			1260/50 398 (400-1)
CIRCLING	1280-1 411 (500-1)	1320-1 451 (500-1)	1320-1 1/2 451 (500-1 1/2)	1420-2 551 (600-2)

CEDAR RAPIDS, IOWA
Amdt 13 13010

CEDAR RAPIDS/ THE EASTERN IOWA (CID)
VOR RWY 27

41°53'N-91°43'W