


WAAS CH 77603 W09A	APP CRS 089°	Rwy Idg TDZE Apt Elev	8175 857 869
--	------------------------	-----------------------------	---

RNAV (GPS) RWY 9
CEDAR RAPIDS/ THE EASTERN IOWA (CID)

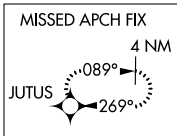
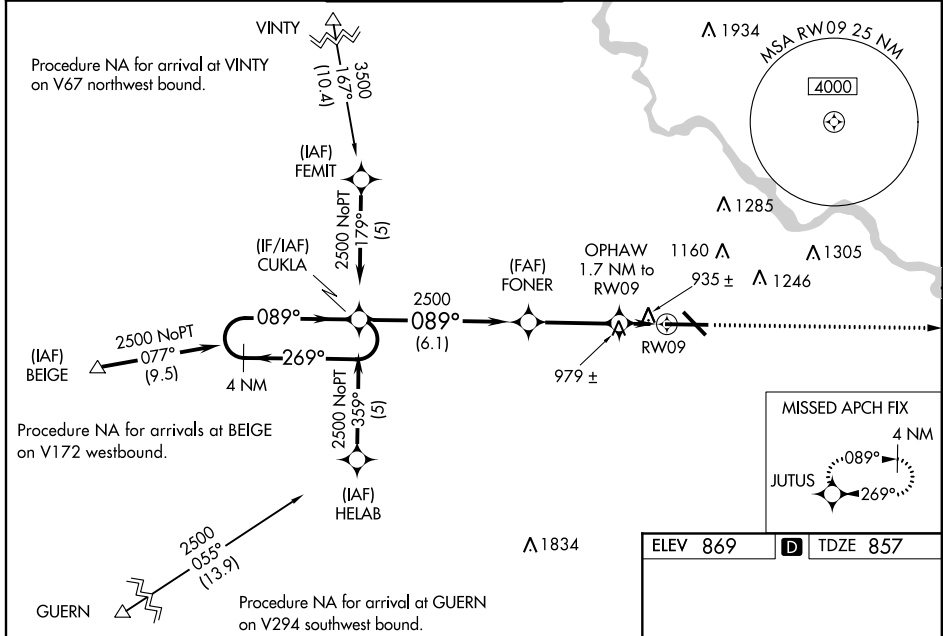
▼ Baro-VNAV NA when using Iowa City altimeter setting. For uncompensated Baro-VNAV systems, LNAV/VNAV NA below -16°C (4°F) or above 47°C (116°F).
▲ DME/DME RNP-0.3 NA. When local altimeter setting not received, use Iowa City altimeter setting and increase all DA 64 feet and all MDA 80 feet; increase LNAV/VNAV all Cats visibility to RVR 5000 and LNAV Cat C to RVR 4000. For inoperative MALSR increase LNAV Cat D visibility to RVR 6000. VDP NA with Iowa City altimeter setting. When using Iowa City altimeter setting; for inoperative MALSR, increase LPV all Cats visibility to RVR 5000, LNAV Cat C visibility to RVR 6000 and LNAV Cat D visibility to 1½ miles.

MALSR

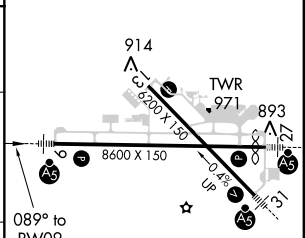
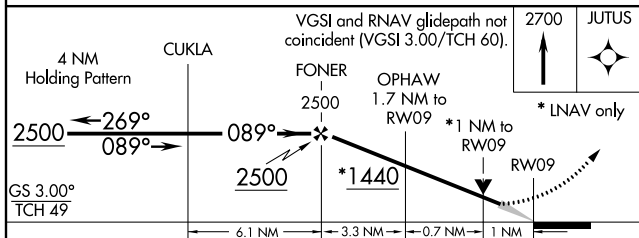


MISSED APPROACH:
Climb to 2700 direct JUTUS and hold.

ATIS 124.15	CEDAR RAPIDS APP CON* 119.7 266.8	CEDAR RAPIDS TOWER* 118.7 (CTAF) 266.8	GND CON 121.6	CLNC DEL 125.45	UNICOM 122.95
-----------------------	---	--	-------------------------	---------------------------	-------------------------



ELEV 869	TDZE 857
----------	----------



CATEGORY	A	B	C	D
LPV DA		1057/24	200 (200-½)	
LNAV/VNAV DA		1204/40	347 (400-¾)	
LNAV MDA	1280-1 411 (500-1)	1320-1 451 (500-1)	1320-1½ 451 (500-1½)	1240/50 383(400-1)
CIRCLING	1280-1 411 (500-1)	1320-1 451 (500-1)	1320-1½ 451 (500-1½)	1420-2 551 (600-2)

MIRL Rwy 13-31

HIRL Rwy 9-27

REIL Rwy 13

NC-3, 07 FEB 2013 to 07 MAR 2013

NC-3, 07 FEB 2013 to 07 MAR 2013