

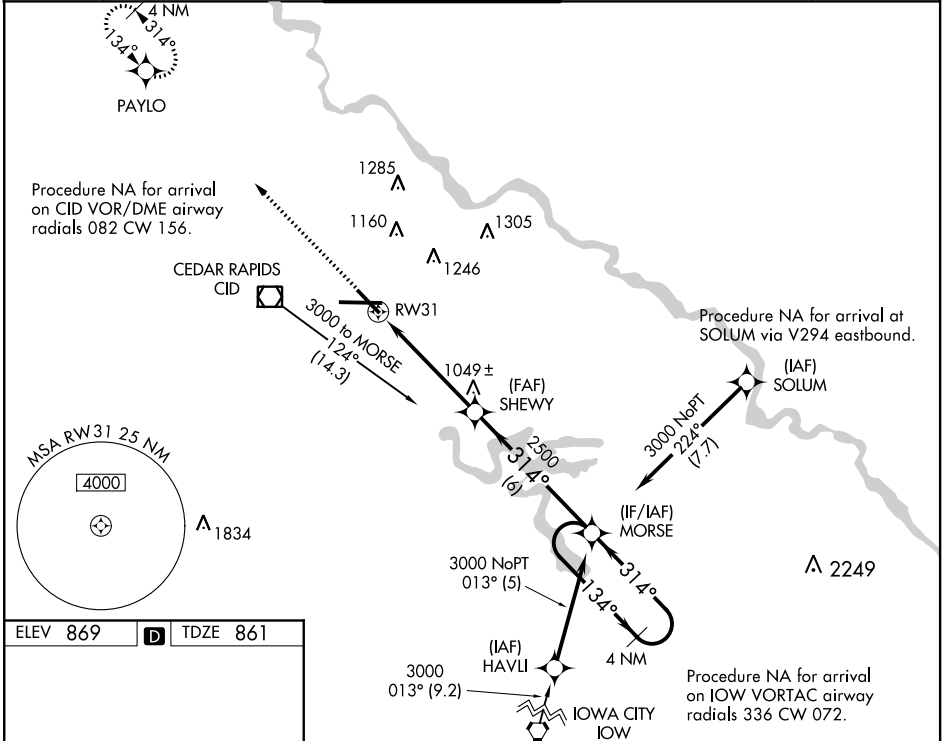
WAAS Chan <b>77503</b> <b>W31A</b>	APP CRS <b>314°</b>	Rwy Idg TDZE Apt Elev	<b>6200</b> <b>861</b> <b>869</b>
--	------------------------	-----------------------------	---

# RNAV (GPS) RWY 31

CEDAR RAPIDS/ THE EASTERN IOWA (CID)

<p>Baro-VNAV NA below -16°C (4°F). DME/DME RNP- 0.3 NA. For inoperative MALSRR increase LNAV/VNAV Cat D visibility to 1 and LNAV Cat D visibility to 1 1/4 mile.</p>	<p>MALSRR</p>	<p>MISSED APPROACH: Climb to 3000 direct PAYLO and hold.</p>
--	---------------	--

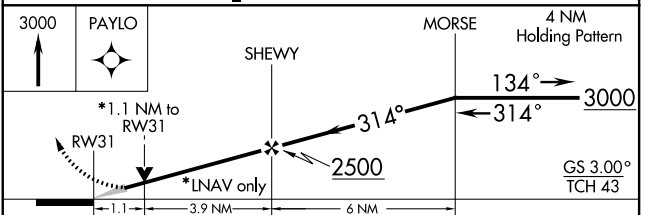
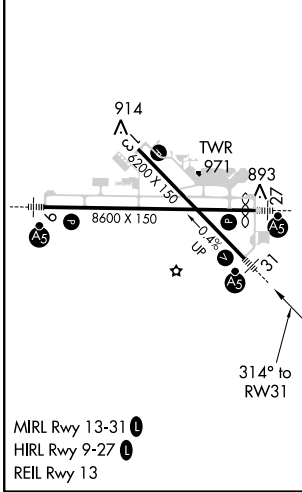
<p>ATIS <b>124.15</b></p>	<p>CEDAR RAPIDS APP CON * <b>119.7 266.8</b></p>	<p>CEDAR RAPIDS TOWER * <b>118.7 (CTAF) 266.8</b></p>	<p>GND CON <b>121.6</b></p>	<p>CLNC DEL <b>125.45</b></p>	<p>UNICOM <b>122.95</b></p>
-------------------------------	--	---	---------------------------------	-----------------------------------	---------------------------------



NC-3, 07 FEB 2013 to 07 MAR 2013

NC-3, 07 FEB 2013 to 07 MAR 2013

ELEV 869	D	TDZE 861
----------	---	----------



CATEGORY	A	B	C	D
LPV DA	1120-1/2 259 (300-1/2)			
LNAV/VNAV DA	1140-1/2 279 (300-1/2)			1140-3/4 279 (300-3/4)
LNAV MDA	1240-1/2 379 (400-1/2)			1240-1 379 (400-1)
CIRCLING	1280-1 411 (500-1)	1320-1 451 (500-1)	1320-1 1/2 451 (500-1 1/2)	1420-2 551 (600-2)