

WAAS CH 72902 W27A	APP CRS 269°	Rwy Idg 8175 TDZE 862 Apt Elev 869
--	------------------------	---

RNAV (GPS) RWY 27

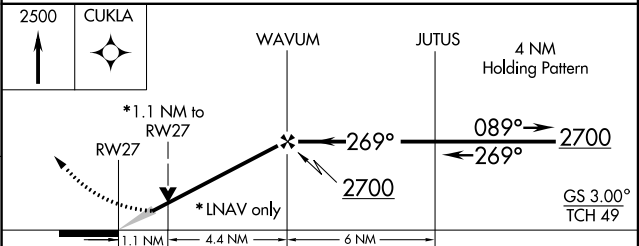
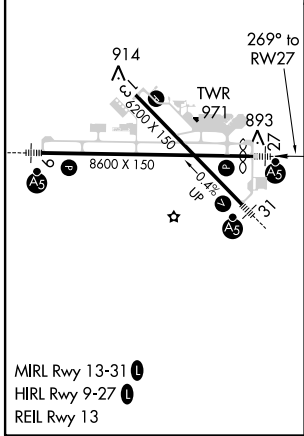
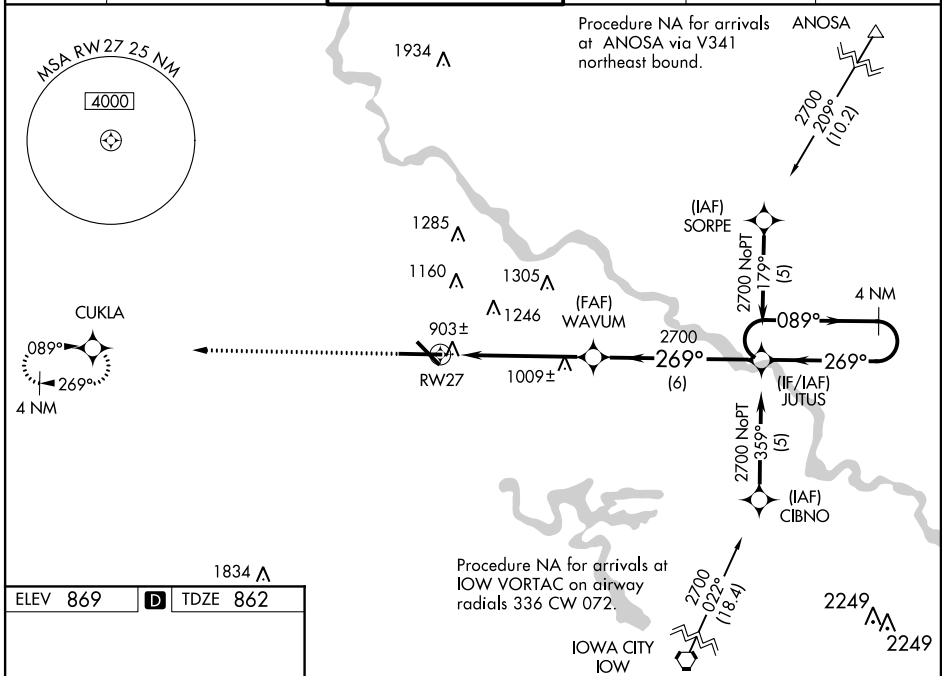
CEDAR RAPIDS/ THE EASTERN IOWA (CID)

⚠ Baro-VNAV NA when using Iowa City altimeter setting.
⚠ If local altimeter setting not received, use Iowa City altimeter setting and increase all DAs/MDAs 80 feet. VDP NA when using Iowa City altimeter setting.
 For uncompensated Baro-VNAV systems, LNAV/VNAV NA below -16°C (4°F) or above 47°C (116°F). DME/DME RNP-0.3 NA.
 For inoperative MALSR increase LNAV/VNAV Cat. D visibility to RVR 5000 and LNAV Cat. D visibility to RVR 6000.

MALSR

MISSED APPROACH:
Climb to 2500 direct CUKLA and hold.

ATIS 124.15	CEDAR RAPIDS APP CON* 119.7 266.8	CEDAR RAPIDS TOWER* 118.7 (CTAF) 266.8	GND CON 121.6	CLNC DEL 125.45	UNICOM 122.95
-----------------------	---	--	-------------------------	---------------------------	-------------------------



CATEGORY	A	B	C	D
LPV DA	1112/24 250 (300-½)			
LNAV/VNAV DA	1163/24	301 (300-½)	1163/40 301 (300-¾)	
LNAV MDA	1260/24	398 (400-½)	1260/50 398 (400-1)	
CIRCLING	1280-1	1320-1	1320-1½	1420-2
	411 (500-1)	451 (500-1)	451 (500-1½)	551 (600-2)

NC-3, 07 FEB 2013 to 07 MAR 2013

NC-3, 07 FEB 2013 to 07 MAR 2013