

LOC I-CID 109.3	APP CRS 089°	Rwy Idg TDZE Apt Elev	8175 857 869
---------------------------	------------------------	-----------------------------	---

ILS or LOC RWY 9

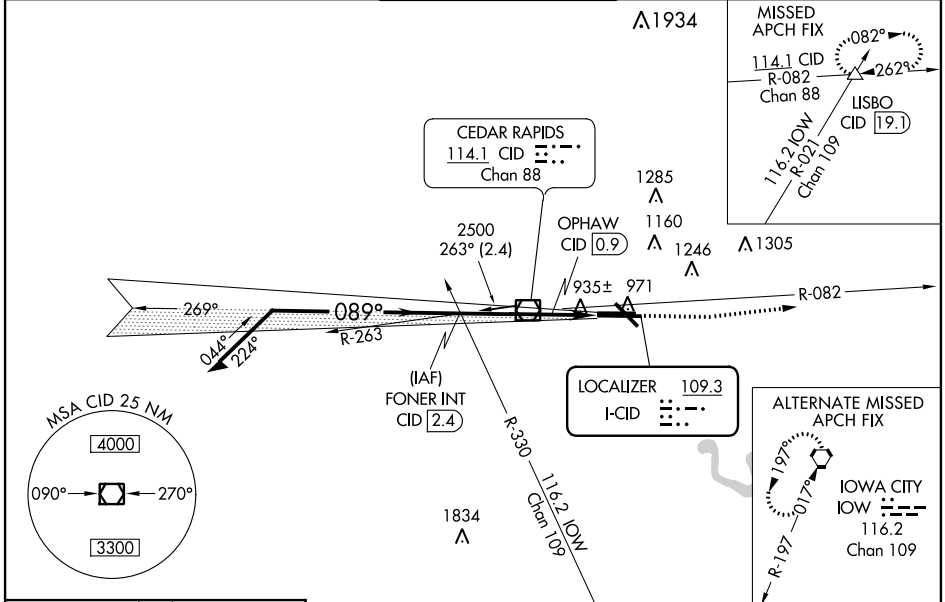
CEDAR RAPIDS/THE EASTERN IOWA (CID)

⚠ *RVR 1800 authorized with use of FD or AP or HUD to DA. When local altimeter setting not received, use Iowa City altimeter setting and increase all DA 64 feet and all MDA 80 feet; increase S-LOC Cat D visibility to RVR 6000. OPHAW FIX minimums: increase S-LOC Cat C visibility to RVR 4000 and Cat D to RVR 6000. When using Iowa City altimeter setting, for inoperative MALSR, increase S-ILS 9 all Cats visibility to RVR 5000.

MALSR
A5

MISSED APPROACH: Climb to 1400 then climb to 2700 via CID VOR/DME R-082 to LISBO/CID VOR/DME 19.1 DME and hold.

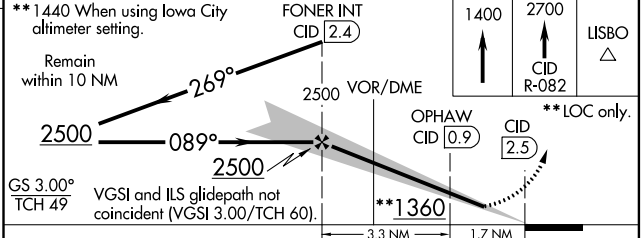
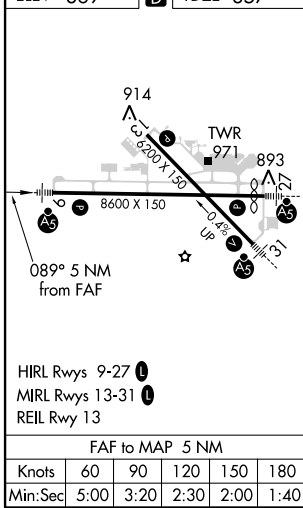
ATIS 124.15	CEDAR RAPIDS APP CON 119.7 266.8	CEDAR RAPIDS TOWER* 118.7 (CTAF) 0 266.8	GND CON 121.6	CLNC DEL 125.45
-----------------------	--	--	-------------------------	---------------------------



NC-3, 07 FEB 2013 to 07 MAR 2013

NC-3, 07 FEB 2013 to 07 MAR 2013

ELEV 869	D	TDZE 857
----------	----------	----------



CATEGORY	A	B	C	D
S-ILS 9	*1057/24 200 (200-1/2)			
S-LOC 9	1360/24	503 (500-1/2)	1360/50	503 (500-1)
CIRCLING	1360-1	491 (500-1)	1360-1 1/2 491 (500-1 1/2)	1420-2 551 (600-2)
OPHAW FIX MINIMUMS				
S-LOC 9	1220/24	363 (400-1/2)	1220/40 363 (400-3/4)	
CIRCLING	1280-1 411 (500-1)	1320-1 451 (500-1)	1320-1 1/2 451 (500-1 1/2)	1420-2 551 (600-2)