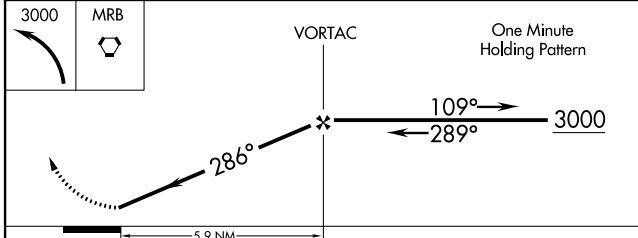
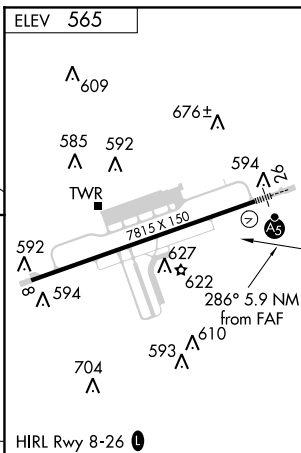
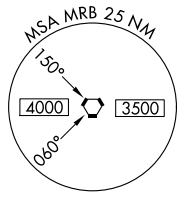
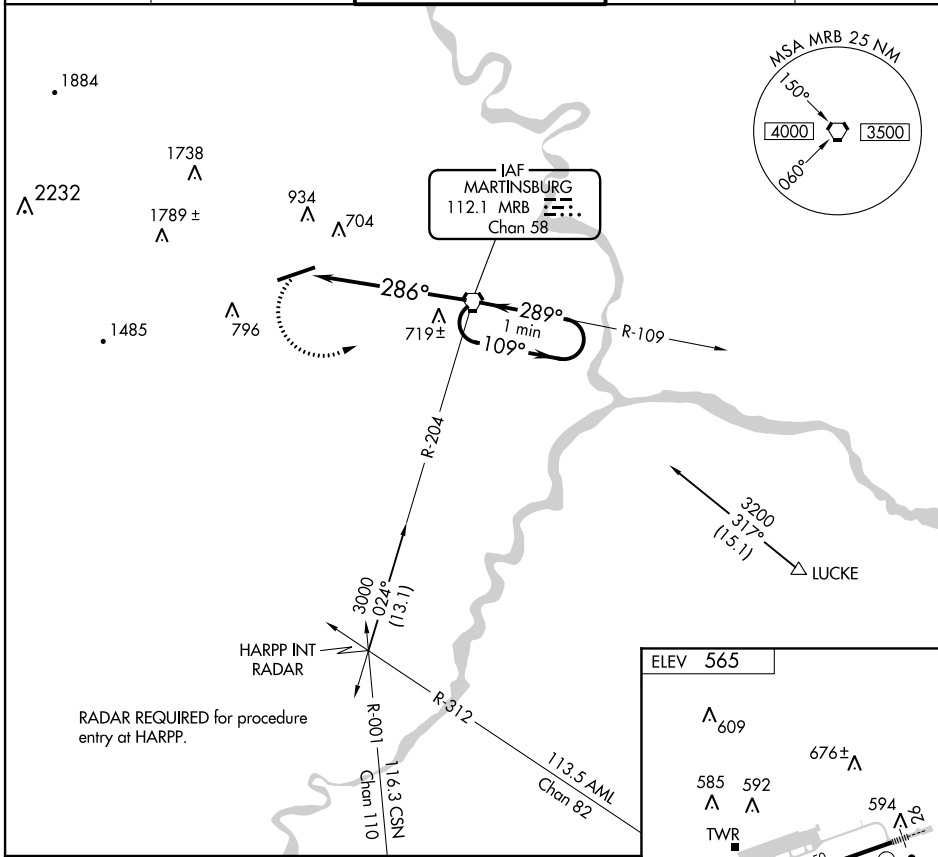


VORTAC MRB 112.1 Chan 58	APP CRS 286°	Rwy Idg TDZE Apt Elev	N/A N/A 565
--	------------------------	-----------------------------	--

MARTINSBURG/
EASTERN WEST VIRGINIA RGNL/SHEPHERD FIELD (MRB) **VOR-A**

⚠ When local altimeter setting not received, use Hagerstown altimeter setting and increase all MDA 80 feet and Cat C/D visibility ¼ mile. **MISSED APPROACH:** Climbing left turn to 3000 direct MRB VORTAC and hold, continue climb in hold to 3000.

ASOS 119.925	POTOMAC APP CON 126.1 338.25	MARTINSBURG TOWER * 124.3 (CTAF) 233.7	GND CON 121.8 257.65	UNICOM 122.95
------------------------	--	---	--------------------------------	-------------------------



CATEGORY	A	B	C	D	E	FAF to MAP 5.9 NM					
CIRCLING	1020-1 455 (500-1)	1080-1 515 (600-1)	1080-1½ 515 (600-1½)	1380-2¾ 815 (900-2¾)	2140-3 1575 (1600-3)	Knots	60	90	120	150	180
						Min:Sec	5:54	3:56	2:57	2:22	1:58

NE-4, 07 FEB 2013 to 07 MAR 2013

NE-4, 07 FEB 2013 to 07 MAR 2013