

APP CRS 079°	Rwy Idg 7815
	TDZE 565
	Apt Elev 565

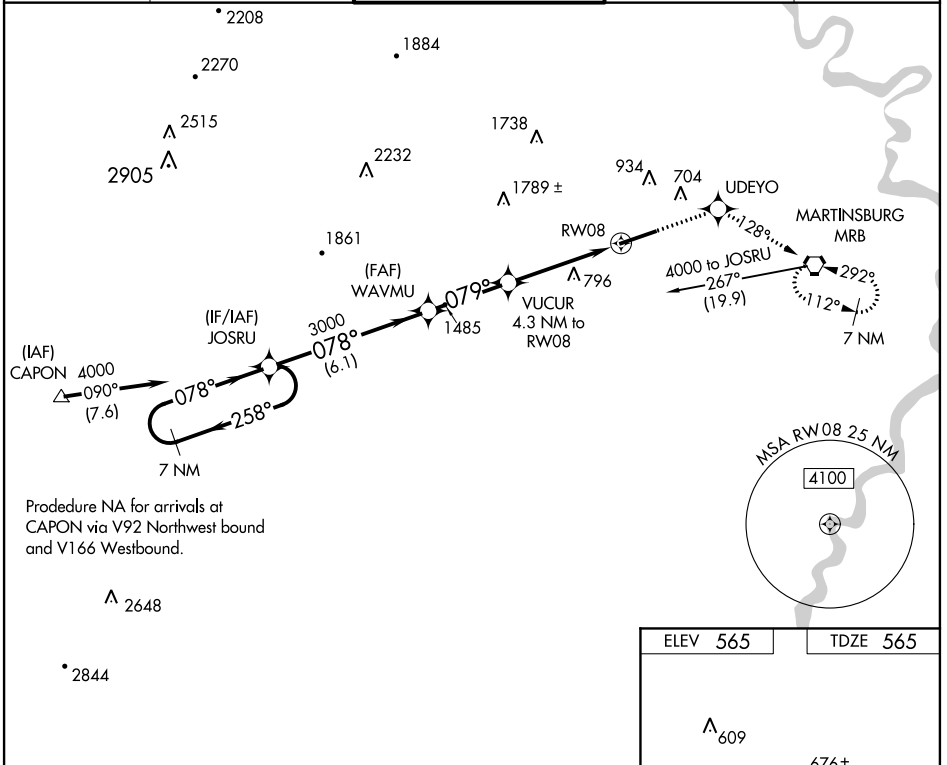
MARTINSBURG/
EASTERN WEST VIRGINIA RGNL/SHEPHERD FIELD (MRB)

RNAV (GPS) RWY 8

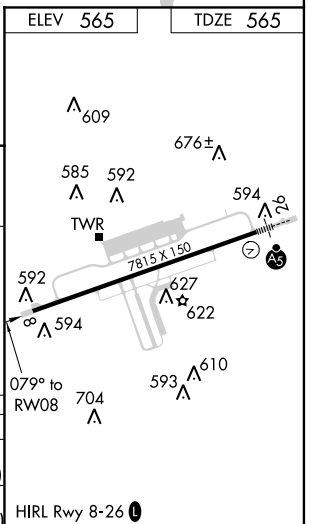
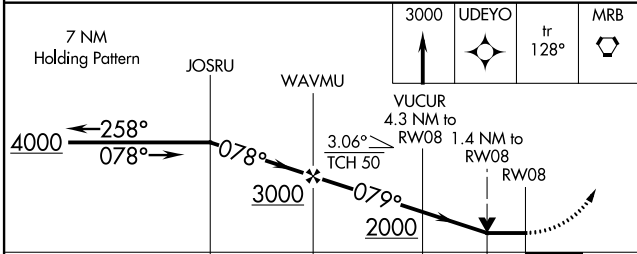
▼ DME/DME RNP-0.3 NA. Visibility reduction by helicopters NA.
▲ When local altimeter setting not received, use Hagerstown altimeter setting and increase all MDA 80 feet, LNAV Cat C, D, E visibility ¼ mile, and Circling Cat C, D visibility ¼ mile. VDP NA when using Hagerstown altimeter setting.

MISSED APPROACH: Climb to 3000 direct UDEYO and on track 128° to MRB VORTAC and hold, continue climb-in-hold to 3000.

ASOS 119.925	POTOMAC APP CON 126.1 338.25	MARTINSBURG TOWER * 124.3 (CTAF) 233.7	GND CON 121.8 257.65	UNICOM 122.95
------------------------	--	--	--------------------------------	-------------------------



Procedure NA for arrivals at CAPON via V92 Northwest bound and V166 Westbound.



CATEGORY	A	B	C	D	E
LNAV MDA	1060-1	495 (500-1)	1060-1¼ 495 (500-1¼)	1060-1½ 495 (500-1½)	1060-1¾ 495 (500-1¾)
CIRCLING	1060-1 495 (500-1)	1080-1 515 (600-1)	1080-1½ 515 (600-1½)	1380-2¾ 815 (900-2¾)	2140-3 1575 (1600-3)

RNAV (GPS) RWY 8

NE-4, 07 FEB 2013 to 07 MAR 2013

NE-4, 07 FEB 2013 to 07 MAR 2013