

WAAS CH <b>53609</b> <b>W26A</b>	APP CRS <b>259°</b>	Rwy Idg TDZE <b>548</b> Apt Elev <b>565</b>	<b>7815</b> <b>548</b> <b>565</b>
--	------------------------	---	---

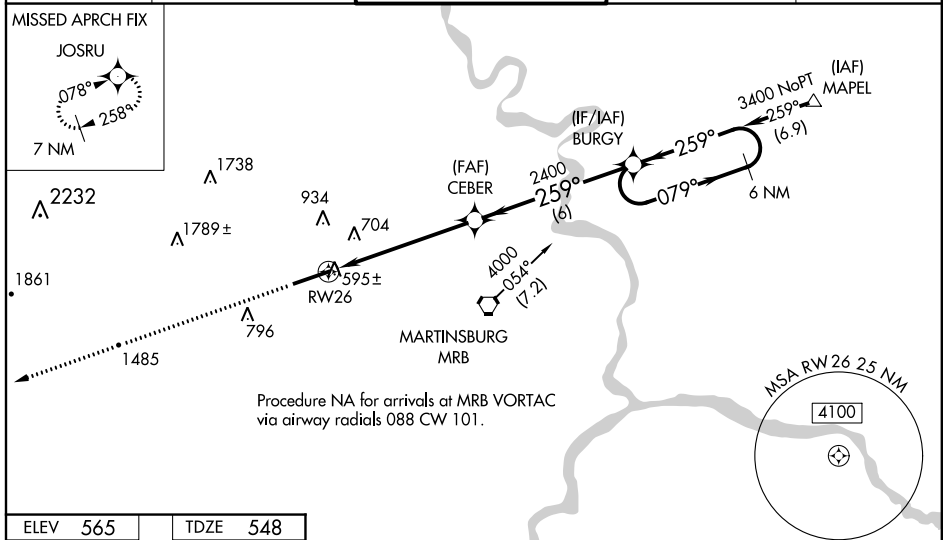
MARTINSBURG/  
EASTERN WEST VIRGINIA RGNL/SHEPHERD FIELD (MRB) **RNAV (GPS) RWY 26**

**▼** Baro-VNAV NA when using Hagerstown altimeter setting. DME/DME RNP-0.3 NA.  
**▲** For uncompensated Baro-VNAV systems, LNAV/VNAV NA below -16°C (4°F) or above 54°C (130°F). VDP NA when using Hagerstown altimeter setting.  
 When local altimeter setting not received, use Hagerstown altimeter setting and increase all DA 70 feet and MDA 80 feet, increase LNAV/VNAV all Cats, LNAV Cats C, D, E and Circling Cat D visibilities 1/4 mile. For inoperative MALSRL increase LPV Cat E visibility to 3/4 mile, LNAV/VNAV Cat E to 2 1/4 mile, LNAV Cat E to 1 1/2 mile. For inoperative MALSRL when using Hagerstown altimeter setting increase LPV all Cats visibility to 1 mile, LNAV/VNAV Cat E visibility to 2 1/2 mile and LNAV Cat E visibility to 1 1/4 mile.

MALSRL

MISSED APPROACH:  
Climb to 4100 direct JOSRU and hold, continue climb-in-hold to 4100.

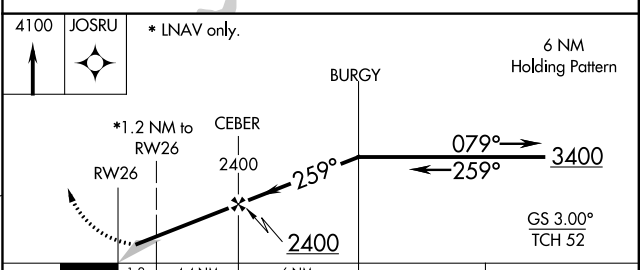
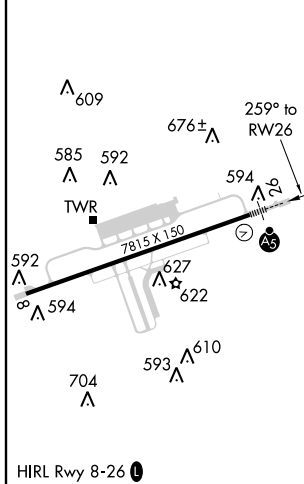
ASOS <b>119.925</b>	POTOMAC APP CON <b>126.1 338.25</b>	MARTINSBURG TOWER * <b>124.3 (CTAF) 233.7</b>	GND CON <b>121.8 257.65</b>	UNICOM <b>122.95</b>
------------------------	--	--	--------------------------------	-------------------------



NE-4, 07 FEB 2013 to 07 MAR 2013

NE-4, 07 FEB 2013 to 07 MAR 2013

ELEV <b>565</b>	TDZE <b>548</b>
-----------------	-----------------



CATEGORY	A	B	C	D	E
LPV DA	798-1/2		250 (300-1/2)		
LNAV/VNAV DA	1213-1 3/4		665 (700-1 3/4)		
LNAV MDA	980-1/2	432 (500-1/2)	980-3/4 432 (500-3/4)	980-1	432 (500-1)
CIRCLING	1020-1 455 (500-1)	1080-1 515 (600-1)	1080-1 1/2 515 (600-1 1/2)	1380-2 3/4 815 (900-2 3/4)	2140-3 1575 (1600-3)

**RNAV (GPS) RWY 26**