

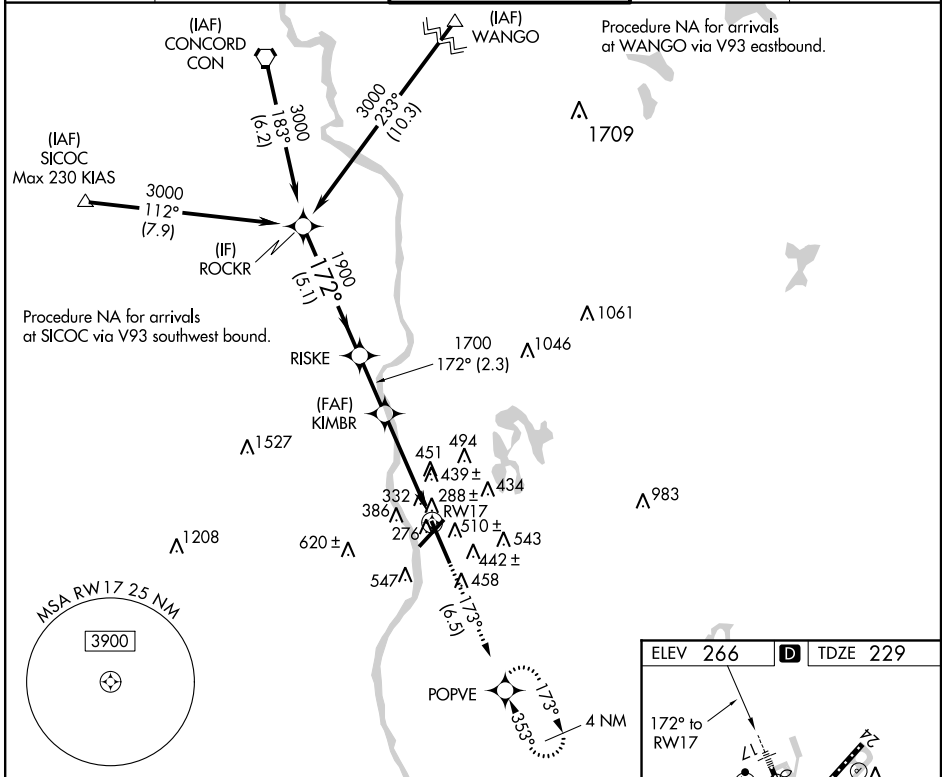
APP CRS	Rwy Idg	<b>8914</b>
<b>172°</b>	TDZE	<b>229</b>
	Apt Elev	<b>266</b>

# RNAV (RNP) Z RWY 17

MANCHESTER (MHT)

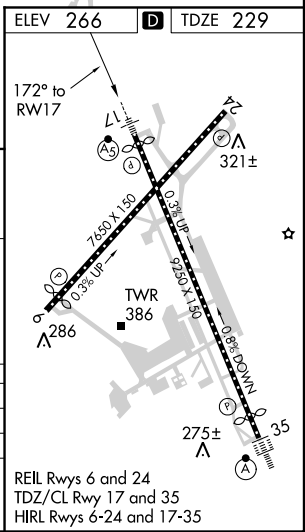
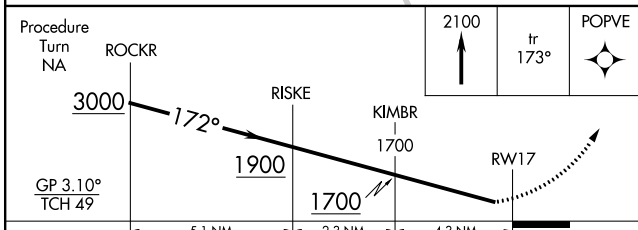
<p><b>▽</b> For uncompensated Baro-VNAV systems, procedure NA below -15°C (5°F) or above 38°C (100°F). GPS Required. For inoperative MALSR, increase RNP 0.11 visibility to RVR 6000, RNP 0.30 visibility to 2. Visibility reduction by helicopters NA.</p> <p><b>△ NA</b></p>	<p>MALSR</p>	<p>MISSED APPROACH: Climb to 2100 via 173° track to POPVE and hold.</p>
	<p>Procedure NA for arrivals at WANGO via V93 eastbound.</p>	

ATIS	BOSTON APP CON	MANCHESTER TOWER	GND CON	CLNC DEL
<b>119.55</b>	<b>124.9 269.075</b>	<b>121.3 239.025</b>	<b>121.9</b>	<b>135.9</b>



NE-1, 07 FEB 2013 to 07 MAR 2013

NE-1, 07 FEB 2013 to 07 MAR 2013



CATEGORY	A	B	C	D
RNP 0.11 DA		606/40	377 (400-¾)	
RNP 0.30 DA		810-1½	581 (600-1½)	

AUTHORIZATION REQUIRED