

WAAS CH 99614 W35A	APP CRS 353°	Rwy Idg TDZE Apt Elev	7650 265 266
----------------------------------------	------------------------	-----------------------------	-----------------------------------------

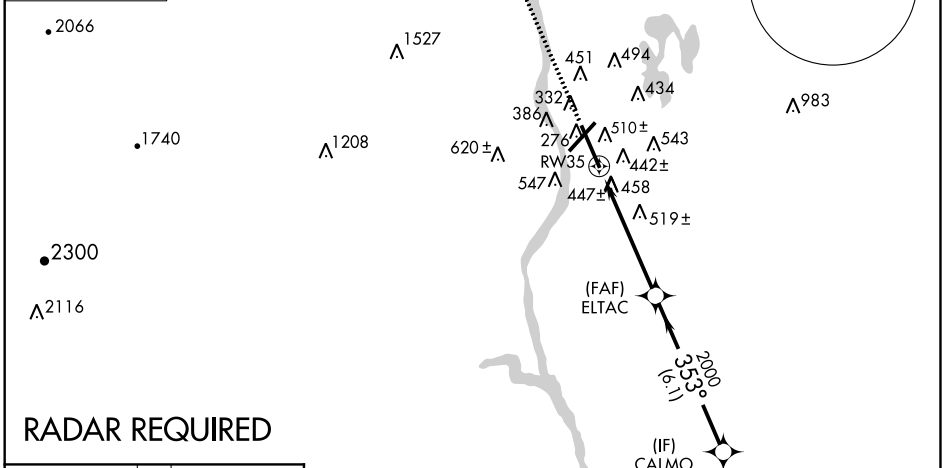
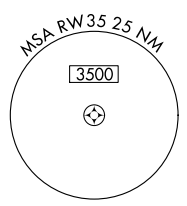
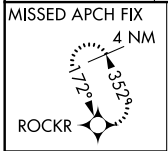
RNAV (GPS) RWY 35

MANCHESTER (MHT)

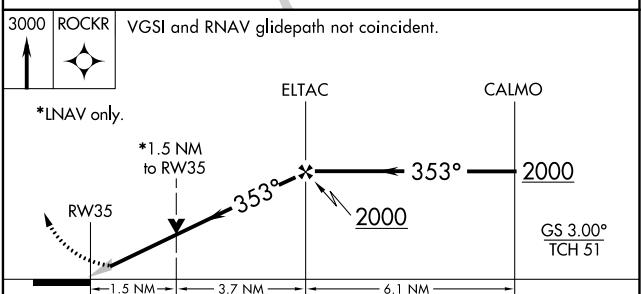
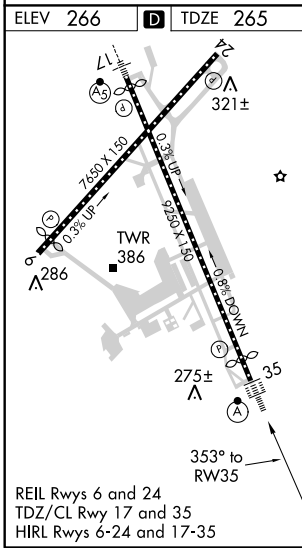
▼ For uncompensated Baro-VNAV systems, LNAV/VNAV NA below -15°C (5°F) or above 48°C (118°F). DME/DME RNP-0.3 NA. When local altimeter setting not received, use Boire Field altimeter setting and increase all DA 32 feet and all MDA 40 feet; increase Circling Cat. D visibility to 2¼ mile. For inoperative ALSF-2, increase LNAV Cats A, B visibility to RVR 5000. VDP and Baro-VNAV NA when using Boire Field altimeter setting.

MISSED APPROACH:
Climb to 3000 direct ROCKR and hold.

ATIS 119.55	BOSTON APP CON 124.9 269.075	MANCHESTER TOWER 121.3 239.025	GND CON 121.9	CLNC DEL 135.9
-----------------------	----------------------------------------	-------------------------------------------------	-------------------------	--------------------------



RADAR REQUIRED



CATEGORY	A	B	C	D
LPV DA	465/24 200 (200-1)			
LNAV/VNAV DA	739/60 474 (500-1¼)			
LNAV MDA	820/24	555 (600-½)	820/50 555 (600-1)	820/60 555 (600-1¼)
CIRCLING	880-1	614 (700-1)	880-1¼ 614 (700-1¼)	900-2 634 (700-2)

NE-1, 07 FEB 2013 to 07 MAR 2013

NE-1, 07 FEB 2013 to 07 MAR 2013