

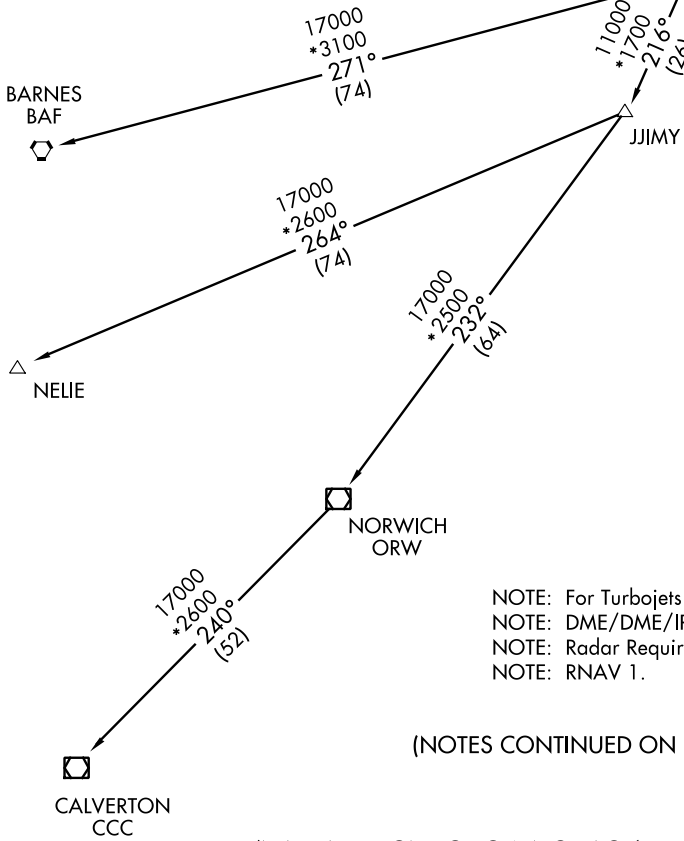
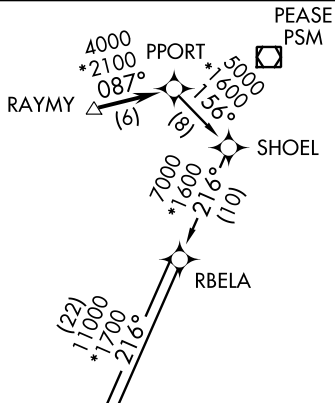
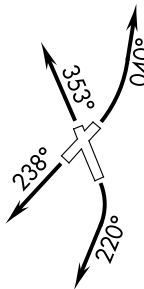
PPOINT ONE DEPARTURE (RNAV)

MANCHESTER (MHT)
MANCHESTER, NEW HAMPSHIRE

ATIS 119.55
 CLNC DEL
 135.9
 GND CON
 121.9
 MANCHESTER TOWER
 121.3 239.025
 BOSTON DEP CON
 124.9 269.075

TAKEOFF MINIMUMS:

Rwy 6: Standard with minimum
 climb of 321' per NM to 3000.
 Rws 17, 24, 35 : Standard with
 minimum climb of 320' per NM to 3000.



NOTE: For Turbojets Only.
 NOTE: DME/DME/IRU or GPS Required.
 NOTE: Radar Required.
 NOTE: RNAV 1.

(NOTES CONTINUED ON FOLLOWING PAGE)

(NARRATIVE ON FOLLOWING PAGE)

NOTE: Chart not to scale.

PPOINT ONE DEPARTURE (RNAV)

MANCHESTER, NEW HAMPSHIRE
MANCHESTER (MHT)

NE-1, 07 FEB 2013 to 07 MAR 2013

NE-1, 07 FEB 2013 to 07 MAR 2013