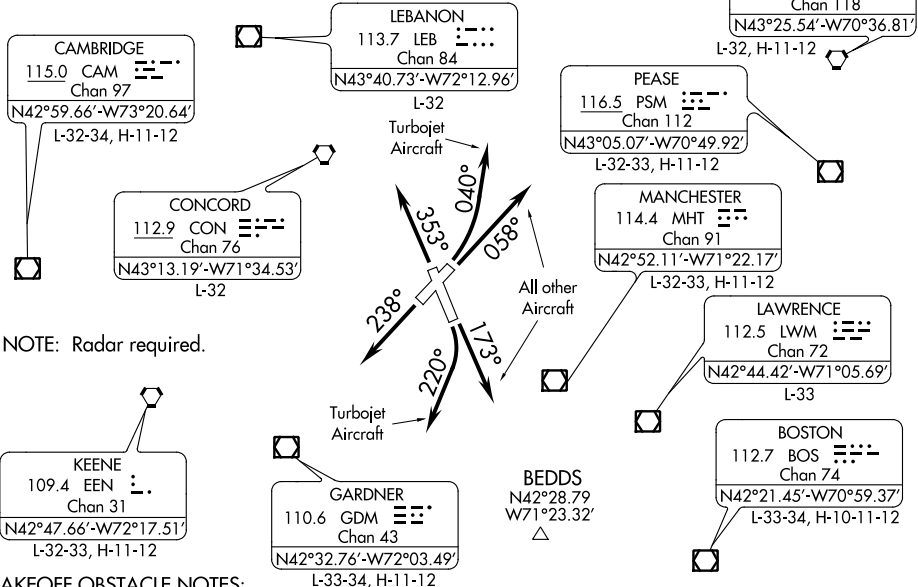


MANCHESTER SIX DEPARTURE

ATIS 119.55
CLINC DEL 135.9
GND CON 121.9
MANCHESTER TOWER 121.3 239.025
BOSTON DEP CON 124.9 269.075

TAKEOFF MINIMUMS:

Rwy 6: Standard with minimum climb of 206' per NM to 1000, or alternatively, with Standard takeoff minimums and a normal 200' per NM climb gradient, takeoff must occur no later than 1900' prior to DER.
Rwy 17: 300-1¼ or Standard with minimum climb of 277' per NM to 600.
Rwy 24: Standard with minimum climb of 321' per NM to 1200.
Rwy 35: Standard with minimum climb of 253' per NM to 2000.



NOTE: Radar required.

TAKEOFF OBSTACLE NOTES:

- Rwy 6: Pole and trees beginning 67' from DER, 162' left of centerline, up to 107' AGL/313' MSL. Fence and trees beginning 6' from DER, 90' right of centerline, up to 72' AGL/272' MSL.
- Rwy 17: Buildings and trees beginning 1792' from DER, 54' left of centerline, up to 107' AGL/418' MSL. Transmission line tower, poles, buildings and trees beginning 761' from DER, 4' right of centerline, up to 90' AGL/418' MSL. Pole 5563' from DER, 92' left of centerline, 57' AGL/457' MSL.
- Rwy 24: Pole and trees beginning 221' from DER, 243' left of centerline, up to 119' AGL/293' MSL. Trees beginning 2556' from DER, 1041' right of centerline, up to 101' AGL/313' MSL.
- Rwy 35: Pole and trees beginning 891' from DER, 527' left of centerline, up to 76' AGL/320' MSL. Poles and trees beginning 719' from DER, 558' right of centerline, up to 44' AGL/281' MSL. Trees 5933' from DER, 1950' left of centerline, up to 76' AGL/409' MSL. Trees 1.0 NM from DER, 1581' left of centerline, up to 60' AGL/414' MSL. Trees 1.2 NM from DER, 1946' left of centerline, up to 85' AGL/407' MSL.

NOTE: Chart not to scale.

DEPARTURE ROUTE DESCRIPTION

- TAKEOFF RWY 6:** TURBOJET AIRCRAFT - Climbing left turn heading 040°, thence ALL OTHER AIRCRAFT - Climb heading 058° or as assigned by ATC, thence
 - TAKEOFF RWY 17:** TURBOJET AIRCRAFT - Climbing right turn heading 220°, thence ALL OTHER AIRCRAFT - Climb heading 173° or as assigned by ATC, thence
 - TAKEOFF RWY 24:** Climb heading 238° or as assigned by ATC, thence
 - TAKEOFF RWY 35:** Climb heading 353° or as assigned by ATC, thence
- Expect vectors to assigned Route/Navaid/Fix. Maintain 3000 or as assigned by ATC
Expect clearance to filed altitude/flight level within five (5) minutes after departure.

NE-1, 07 FEB 2013 to 07 MAR 2013

NE-1, 07 FEB 2013 to 07 MAR 2013