

ILS or LOC/DME RWY 17

MANCHESTER (MHT)

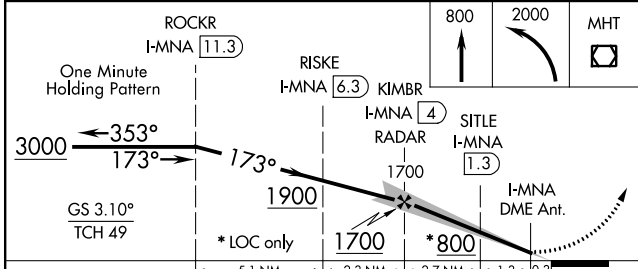
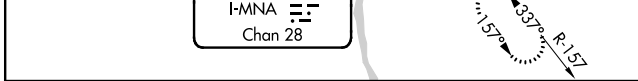
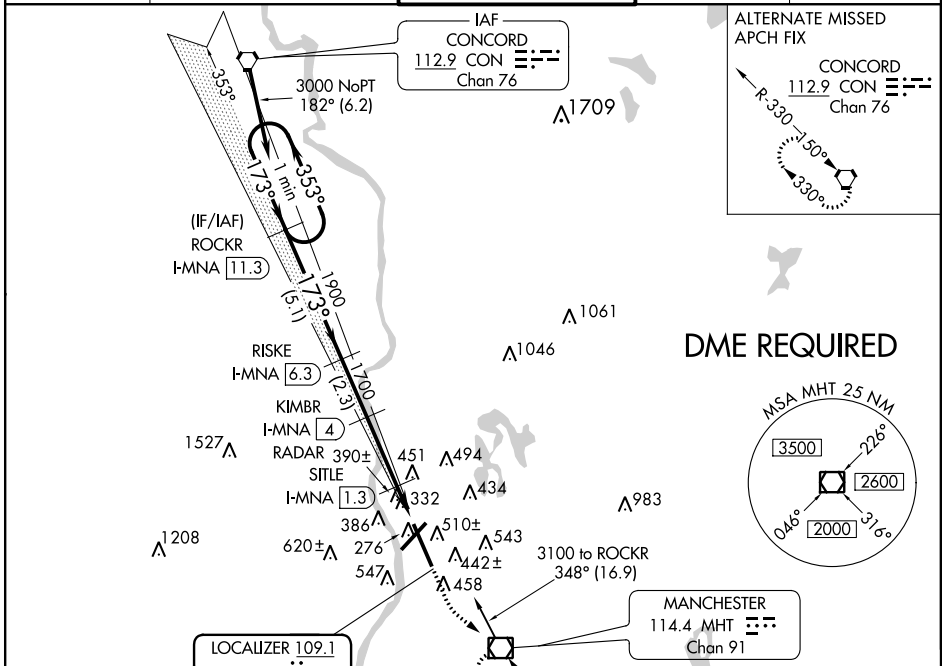
LOC/DME I-MNA 109.1 Chan 28	APP CRS 173°	Rwy ldg 8914 TDZE 229 Apt Elev 266
--	------------------------	---

⚠ When local altimeter setting not received, use Boire Field altimeter setting and increase DA to 461 and all MDA 40 feet; increase S-LOC 17 Cat D visibility to RVR 5000.

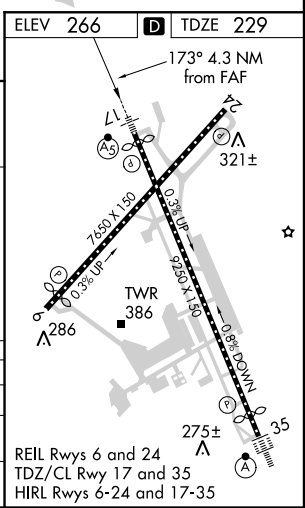


MISSED APPROACH: Climb to 800 then climbing left turn to 2000 direct MHT VOR/DME and hold.

ATIS 119.55	BOSTON APP CON 124.9 269.075	MANCHESTER TOWER 121.3 239.025	GND CON 121.9	CLNC DEL 135.9
-----------------------	--	--	-------------------------	--------------------------



CATEGORY	A	B	C	D
S-ILS 17	429/18 200 (200-½)			
S-LOC 17	640/24	411 (400-½)	640/40	411 (400-¾)
CIRCLING	880-1	614 (700-1)	880-1¾ 614 (700-1¾)	880-2 614 (700-2)



NE-1, 07 FEB 2013 to 07 MAR 2013

NE-1, 07 FEB 2013 to 07 MAR 2013