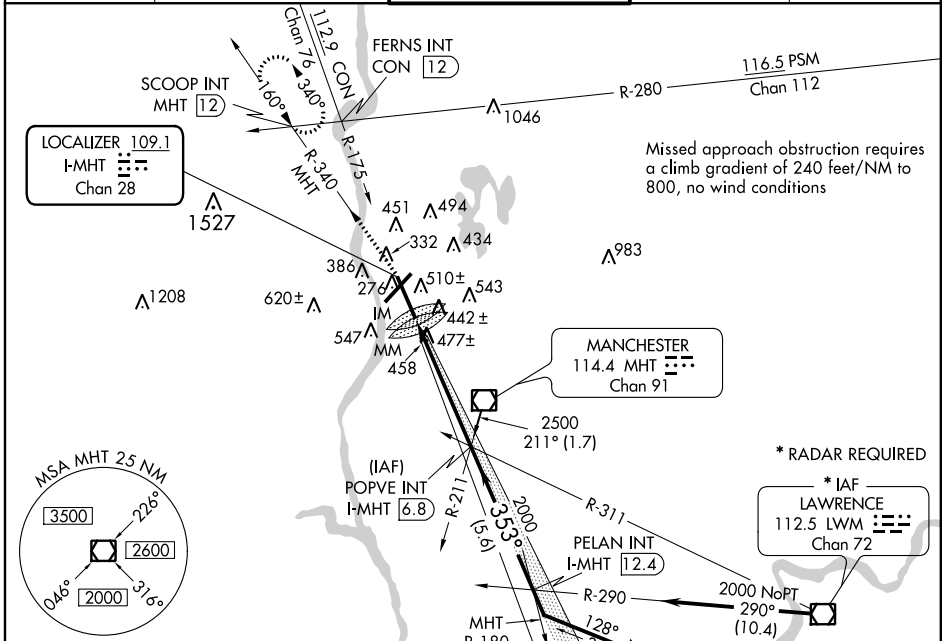


# ILS RWY 35 (CAT III) MANCHESTER (MHT)

LOC/DME I-MHT <b>109.1</b> Chan 28	APP CRS <b>353°</b>	Rwy Idg TDZE Apt Elev	<b>7650</b> <b>265</b> <b>266</b>
--	------------------------	-----------------------------	---

	ALSF-2 	MISSED APPROACH: Climb to 800 then climbing left turn to 3500 via MHT R-340 to SCOOP Int/MHT 12 DME and hold.

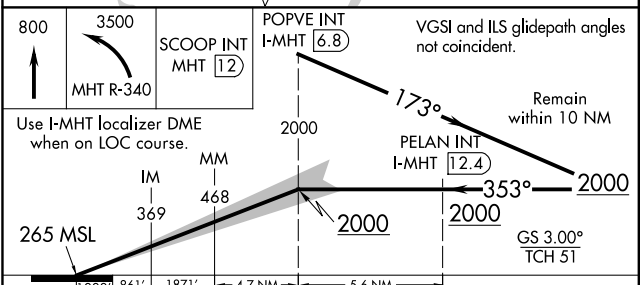
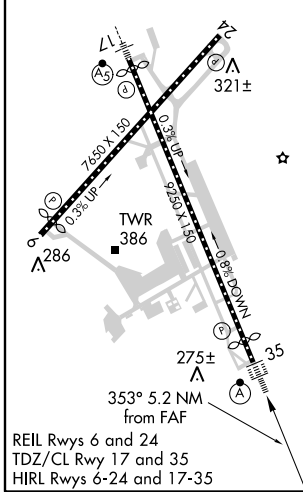
ATIS <b>119.55</b>	BOSTON APP CON <b>124.9 269.075</b>	MANCHESTER TOWER <b>121.3 239.025</b>	GND CON <b>121.9</b>	CLNC DEL <b>135.9</b>
-----------------------	--	--	-------------------------	--------------------------



NE-1, 07 FEB 2013 to 07 MAR 2013

NE-1, 07 FEB 2013 to 07 MAR 2013

ELEV 266	<b>D</b>	TDZE 265
----------	----------	----------



800	3500	SCOOP INT MHT 12	POPVE INT I-MHT 6.8	VGSi and ILS glidepath angles not coincident.
↑	↙			
Use I-MHT localizer DME when on LOC course.				
265 MSL	369	468	2000	2000
1222'	861'	1871'	4.7 NM	5.6 NM

CATEGORY	A	B	C	D
S-ILS 35		CAT IIIa RVR 07		
S-ILS 35		CAT IIIb RVR 06		
S-ILS 35		CAT IIIc NA		

## CATEGORY III ILS - SPECIAL AIRCREW & AIRCRAFT CERTIFICATION REQUIRED