

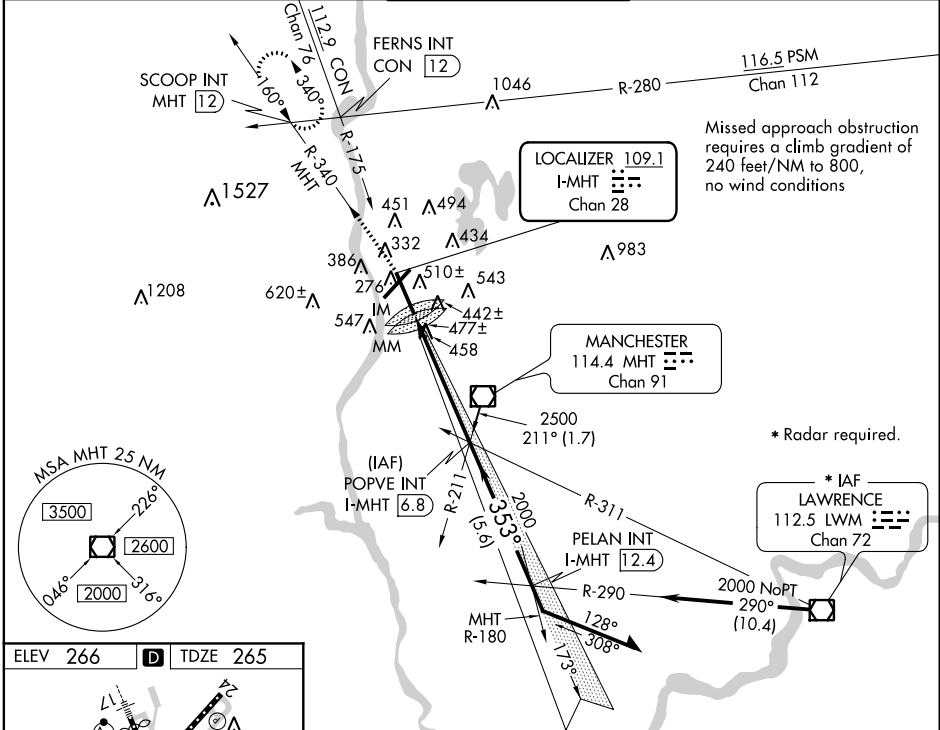
ILS RWY 35 (CAT II) MANCHESTER (MHT)

LOC/DME I-MHT 109.1 Chan 28	APP CRS 353°	Rwy Idg TDZE Apt Elev	7650 265 266
--	------------------------	-----------------------------	---



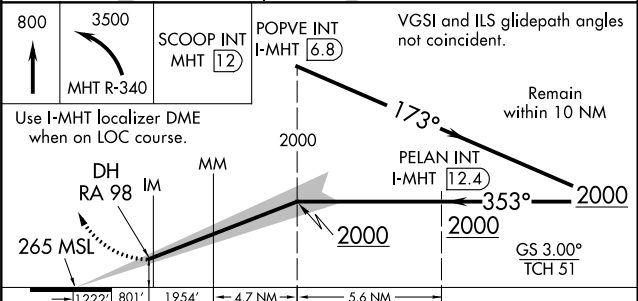
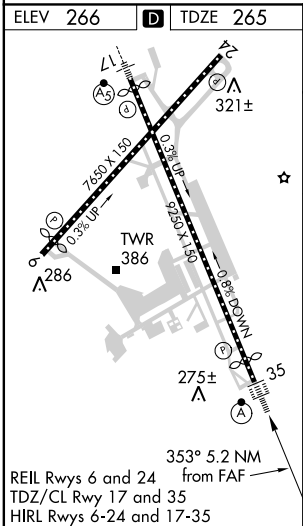
MISSED APPROACH: Climb to 800 then climbing left turn to 3500 via MHT R-340 to SCOOP Int/MHT 12 DME and hold.

ATIS 119.55	BOSTON APP CON 124.9 269.075	MANCHESTER TOWER 121.3 239.025	GND CON 121.9	CLNC DEL 135.9
-----------------------	--	--	-------------------------	--------------------------



NE-1, 07 FEB 2013 to 07 MAR 2013

NE-1, 07 FEB 2013 to 07 MAR 2013



CATEGORY	A	B	C	D
S-ILS 35		RA 98/12	100 DA 365	

**CATEGORY II ILS - SPECIAL AIRCREW
& AIRCRAFT CERTIFICATION REQUIRED**