

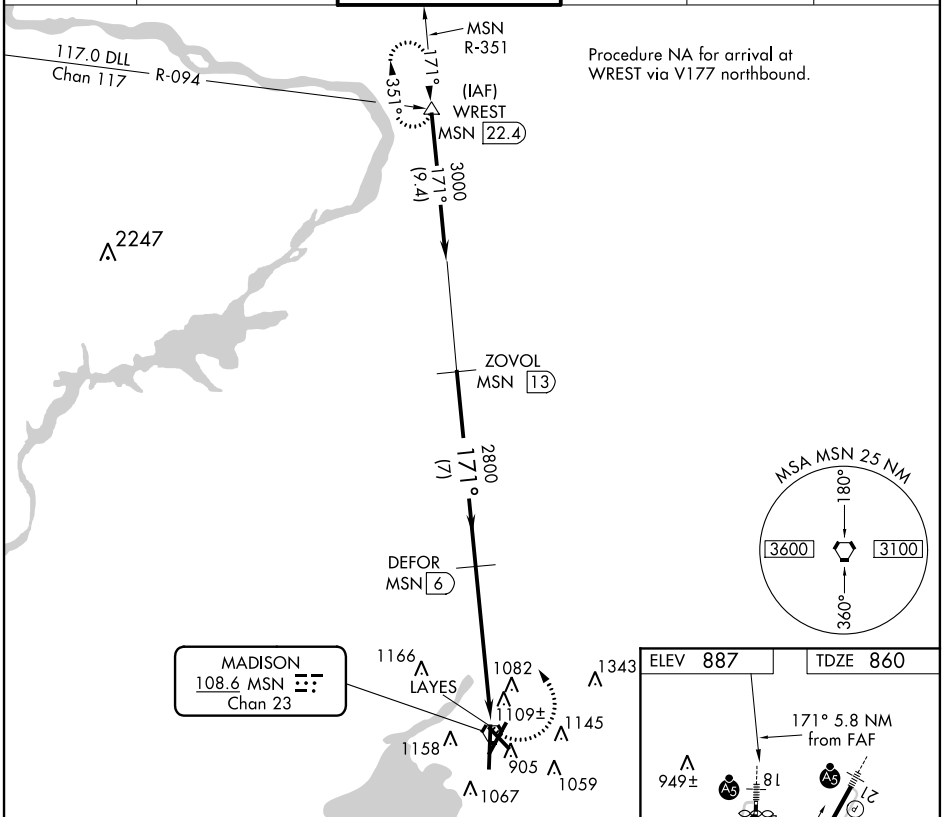
VORTAC MSN <b>108.6</b> Chan 23	APP CRS <b>171°</b>	Rwy Idg TDZE Apt Elev	<b>8606</b> <b>860</b> <b>887</b>
---------------------------------------	------------------------	-----------------------------	---

# VOR/DME or TACAN RWY 18

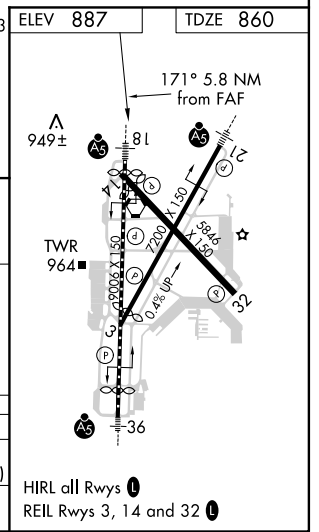
MADISON/DANE COUNTY RGNL-TRUAX FIELD (MSN)

For inoperative MALSR, increase S-18 Cat E visibility to 1 3/4.	MALSR	MISSED APPROACH: Climbing left turn to 3000 via heading 330° and R-351 to WREST Int and hold.
---	-------	---

ATIS <b>124.65 278.3</b>	MADISON APP CON * <b>135.45 343.7</b>	MADISON TOWER * <b>119.3 (CTAF) 0 257.8</b>	GND CON <b>121.9 348.6</b>	CLNC DEL <b>121.62</b>	UNICOM <b>122.95</b>
-----------------------------	--	--	-------------------------------	---------------------------	-------------------------



MADISON  
**108.6** MSN  
Chan 23



ZOVOL MSN 13	3000	DEFOR MSN 6	3000	R-351	WREST
Procedure Turn NA	171°	2800	330°	MSN 1.5	VORTAC LAYES 0.2
7 NM	4.5 NM	1.3 NM	TCH 57		
CATEGORY	A	B	C	D	E
S-18	1360/24	500 (500-1/2)	1360/40	1360/50	1360/60
			500 (500-3/4)	500 (500-1)	500 (500-1 1/4)
CIRCLING	1400-1	1460-1	1460-1 1/2	1460-2	1700-3
	513 (600-1)	573 (600-1)	573 (600-1 1/2)	573 (600-2)	813 (900-3)

EC-3, 07 FEB 2013 to 07 MAR 2013

EC-3, 07 FEB 2013 to 07 MAR 2013