

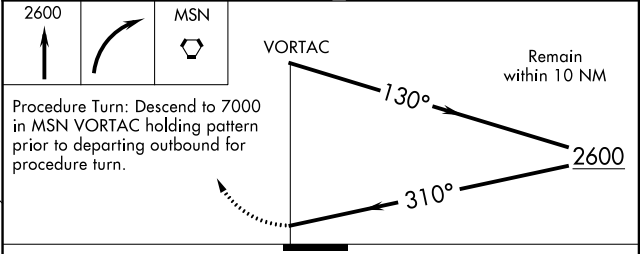
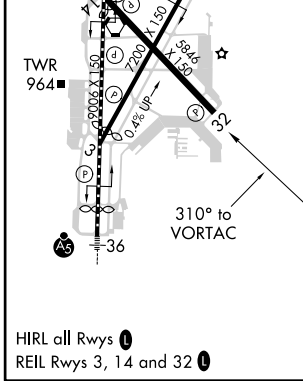
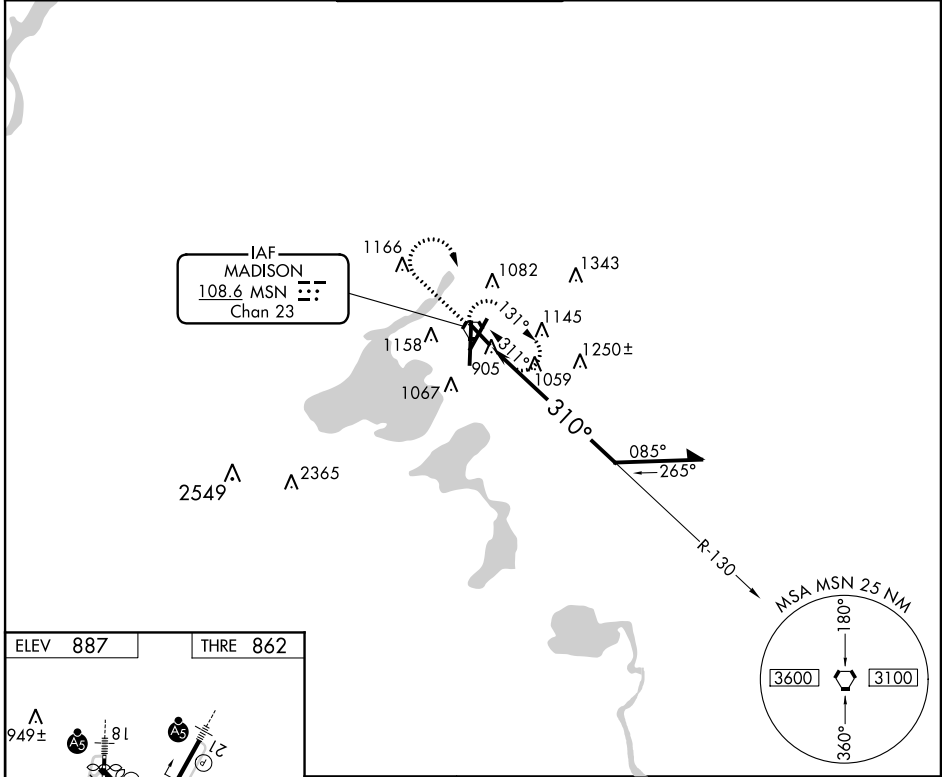
VORTAC MSN <b>108.6</b> Chan <b>23</b>	APP CRS <b>310°</b>	Rwy Idg THRE <b>862</b> Apt Elev <b>887</b>
--	------------------------	---

# VOR RWY 32

MADISON/DANE COUNTY RGNL-TRUAX FIELD (MSN)

<p><b>ASR</b></p> <p>When VGSI inoperative, Straight-In and Circling Rwy 32 procedures NA at night. Visibility reduction by helicopters NA.</p>	<p><b>MISSED APPROACH:</b> Climb to 2600 then right turn direct MSN VORTAC and hold.</p>
---	--

ATIS <b>124.65 278.3</b>	MADISON APP CON ★ <b>135.45 343.7</b>	MADISON TOWER ★ <b>119.3 (CTAF) 257.8</b>	GND CON <b>121.9 348.6</b>	CLNC DEL <b>121.62</b>	UNICOM <b>122.95</b>
-----------------------------	--	--	-------------------------------	---------------------------	-------------------------



CATEGORY	A	B	C	D
S-32	1560-1	698 (700-1)	1560-2	698 (700-2)
CIRCLING	1560-1	673 (700-1)	1560-2 673 (700-2)	1560-2¼ 673 (700-2¼)

# VOR RWY 32

EC-3, 07 FEB 2013 to 07 MAR 2013

EC-3, 07 FEB 2013 to 07 MAR 2013