

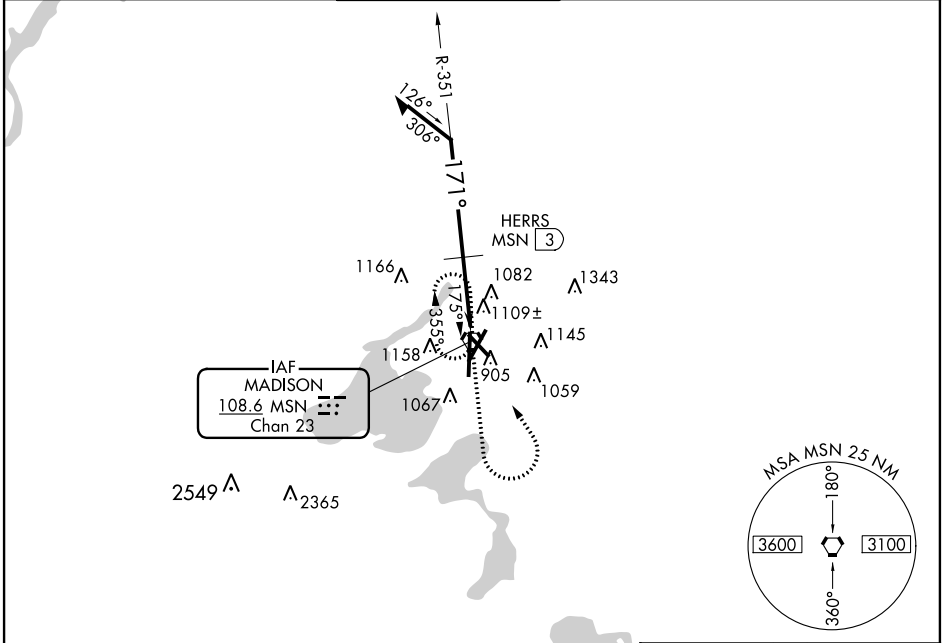
VORTAC MSN <b>108.6</b> Chan <b>23</b>	APP CRS <b>171°</b>	Rwy Idg <b>8606</b> THRE <b>860</b> Apt Elev <b>887</b>
--	------------------------	--

# VOR RWY 18

MADISON/DANE COUNTY RGNL-TRUAX FIELD (MSN)

<b>ASR</b>	For inoperative MALSR, increase S-18 HERRS fix minimums Cat C and D visibility to 1½ mile. When VGSI inoperative, Circling Rwy 32 NA at night.	<b>MALSR</b> 	<b>MISSED APPROACH:</b> Climb to 2700 then left turn direct MSN VORTAC and hold.
------------	--	------------------	--

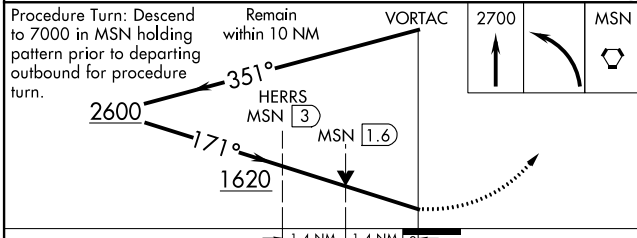
<b>ATIS</b> 124.65 278.3	<b>MADISON APP CON *</b> 135.45 343.7	<b>MADISON TOWER *</b> 119.3 (CTAF) 257.8	<b>GND CON</b> 121.9 348.6	<b>CLNC DEL</b> 121.62	<b>UNICOM</b> 122.95
-----------------------------	--	--	-------------------------------	---------------------------	-------------------------



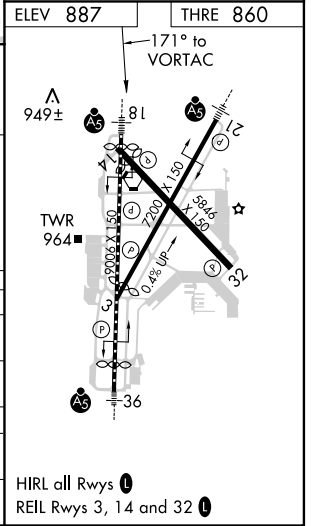
EC-3, 07 FEB 2013 to 07 MAR 2013

EC-3, 07 FEB 2013 to 07 MAR 2013

ELEV 887	THRE 860
----------	----------



CATEGORY	A	B	C	D
S-18	1620-24 760 (800-½)	1620-40 760 (800-¾)	1620-1¾	760 (800-1¾)
CIRCLING	1620-1 733 (800-1)	1620-1¼ 733 (800-¼)	1620-2 733 (800-2)	1620-2¼ 733 (800-2¼)
HERRS FIX MINIMUMS				
S-18	1360/24	500 (500-½)	1360/50	500 (500-1)
CIRCLING	1420-1 533 (600-1)	1460-1 573 (600-1)	1460-1½ 573 (600-½)	1460-2 573 (600-2)



# VOR RWY 18