

MADISON, WISCONSIN

AL-245 (FAA)

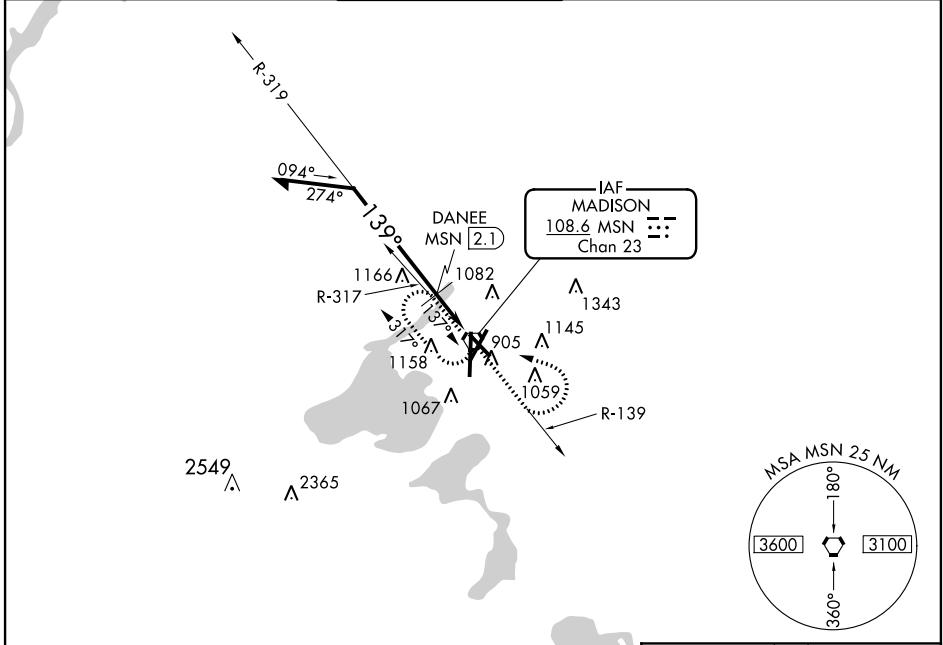
VORTAC MSN <b>108.6</b> Chan <b>23</b>	APP CRS <b>139°</b>	Rwy Idg TDZE <b>861</b> Apt Elev <b>887</b>
--	------------------------	---

# VOR RWY 14

MADISON/DANE COUNTY RGNL-TRUAX FIELD (MSN)

ASR	MISSED APPROACH: Climb to 2700 via MSN R-139 then left turn direct MSN VORTAC and hold.				
-----	---	--	--	--	--

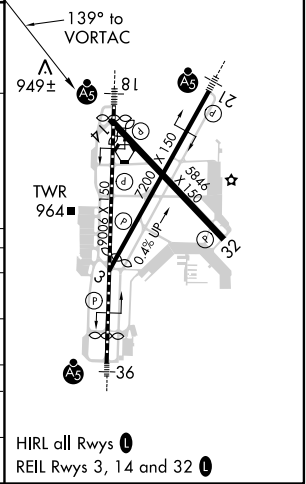
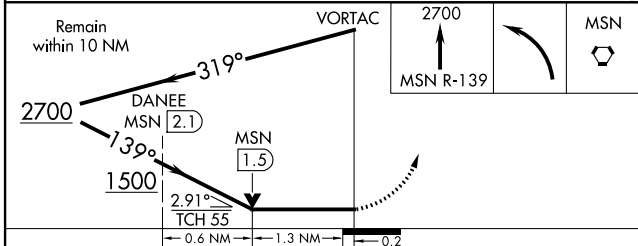
ATIS <b>124.65 278.3</b>	MADISON APP CON * <b>135.45 343.7</b>	MADISON TOWER * <b>119.3</b> (CTAF) <b>0 257.8</b>	GND CON <b>121.9 348.6</b>	CLNC DEL <b>121.62</b>	UNICOM <b>122.95</b>
-----------------------------	--	---	-------------------------------	---------------------------	-------------------------



EC-3, 07 FEB 2013 to 07 MAR 2013

EC-3, 07 FEB 2013 to 07 MAR 2013

ELEV 887	TDZE 881
----------	----------



CATEGORY	A	B	C	D
S-14	1500-1 639 (700-1)		1500-1¾ 639 (700-1¾)	1500-2 639 (700-2)
CIRCLING	1500-1 613 (700-1)		1500-1¾ 613 (700-1¾)	1500-2 613 (700-2)
DANEV FIX MINIMUMS				
S-14	1300-1 439 (500-1)		1300-1¼ 439 (500-1¼)	1300-1½ 439 (500-1½)
CIRCLING	1400-1 513 (600-1)	1460-1 573 (600-1)	1460-1½ 573 (600-1½)	1460-2 573 (600-2)

HIRL all Rwy 3, 14 and 32  
REIL Rwy 3, 14 and 32

MADISON, WISCONSIN  
Orig-A 12264

MADISON/DANE COUNTY RGNL-TRUAX FIELD (MSN)  
43°08'N-89°20'W  
**VOR RWY 14**