

WAAS CH 82721 W36A	APP CRS 002°	Rwy Idg THRE 862 Apt Elev 887	8005
--	------------------------	---	-------------

RNAV (GPS) RWY 36

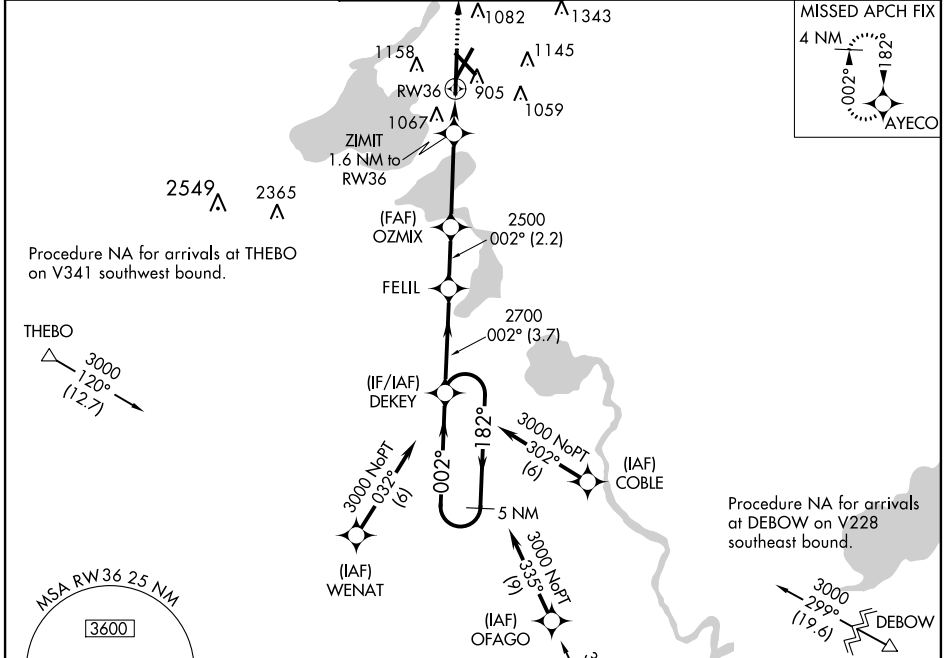
MADISON/DANE COUNTY RGNL-TRUAX FIELD (MSN)

▼ For uncompensated Baro-VNAV systems, LNAV/VNAV NA below -16°C (4°F) or above 38°C (100°F). For inoperative MALSR, increase LNAV/VNAV all Cats visibility to 1½ miles. DME/DME RNP-0.3 NA.



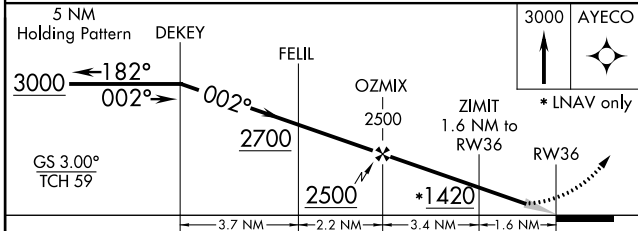
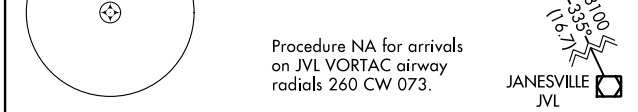
MISSED APPROACH:
Climb to 3000 direct
AYECO and hold.

ATIS 124.65 278.3	MADISON APP CON * 135.45 343.7	MADISON TOWER * 119.3 (CTAF) 257.8	GND CON 121.9 348.6	CLNC DEL 121.62	UNICOM 122.95
-----------------------------	--	--	-------------------------------	---------------------------	-------------------------



EC-3, 07 FEB 2013 to 07 MAR 2013

EC-3, 07 FEB 2013 to 07 MAR 2013



CATEGORY	A	B	C	D
LPV DA		1062/24	200 (200-½)	
LNAV/VNAV DA		1331/60	469 (500-1¼)	
LNAV MDA	1300/24	438 (500-½)	1300/40	438 (500-¾)
CIRCLING	1420-1 533 (600-1)	1460-1 573 (600-1)	1460-1½ 573 (600-1½)	1460-2 573 (600-2)

