

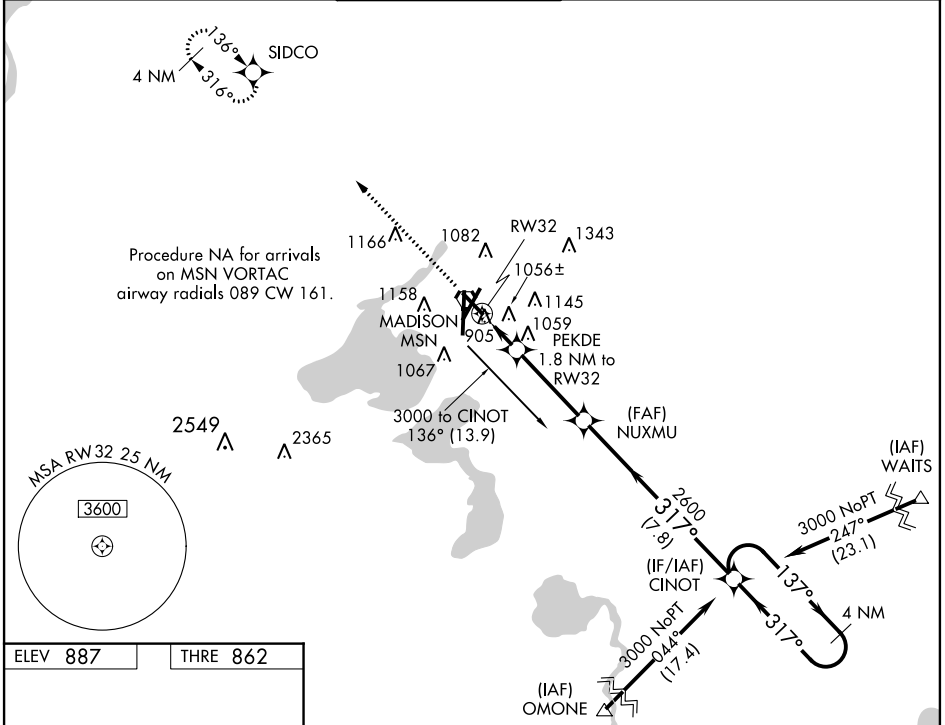
WAAS CH 58021 W32A	APP CRS 317°	Rwy Idg THRE 862 Apt Elev 887	5846
--	------------------------	---	-------------

RNAV (GPS) RWY 32

MADISON/DANE COUNTY RGNL-TRUAX FIELD (MSN)

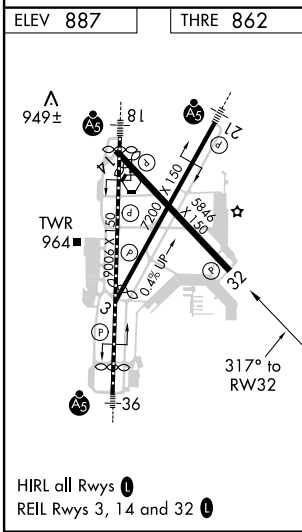
<p>ASR For uncompensated Baro-VNAV systems, LNAV/VNAV NA below -16°C (4°F) or above 38°C (100°F). When VGSI inoperative, Straight-in and Circling Rwy 32 procedures NA at night. DME/DME RNP-0.3 NA. Visibility reduction by helicopters NA.</p>	<p>MISSED APPROACH: Climb to 3200 direct SIDCO and hold.</p>
---	---

ATIS 124.65 278.3	MADISON APP CON * 135.45 343.7	MADISON TOWER * 119.3 (CTAF) 0 257.8	GND CON 121.9 348.6	CLNC DEL 121.62	UNICOM 122.95
-----------------------------	--	---	-------------------------------	---------------------------	-------------------------



EC-3, 07 FEB 2013 to 07 MAR 2013

EC-3, 07 FEB 2013 to 07 MAR 2013



3200	SIDCO	CINOT	4 NM Holding Pattern	
*LNAV only.	PEKDE 1.8 NM to RW32	NUXMU 2600	3000	
	RW32	*1480	2600	
	1.8 NM	3.5 NM	7.8 NM	
CATEGORY	A	B	C	D
LPV DA		1222-1 $\frac{1}{8}$	360 (400-1 $\frac{1}{8}$)	
LNAV/VNAV DA		1237-1 $\frac{1}{4}$	375 (400-1 $\frac{1}{4}$)	
LNAV MDA	1320-1	458 (500-1)	1320-1 $\frac{3}{8}$	458 (500-1 $\frac{3}{8}$)
CIRCLING	1420-1 533 (600-1)	1460-1 573 (600-1)	1460-1 $\frac{1}{2}$ 573 (600-1 $\frac{1}{2}$)	1460-2 573 (600-2)

GS 3.00°
TCH 56

RNAV (GPS) RWY 32