

WAAS CH 42829 W21A	APP CRS 209°	Rwy Idg THRE 887 Apt Elev 887	7200
--	------------------------	---	-------------

RNAV (GPS) RWY 21

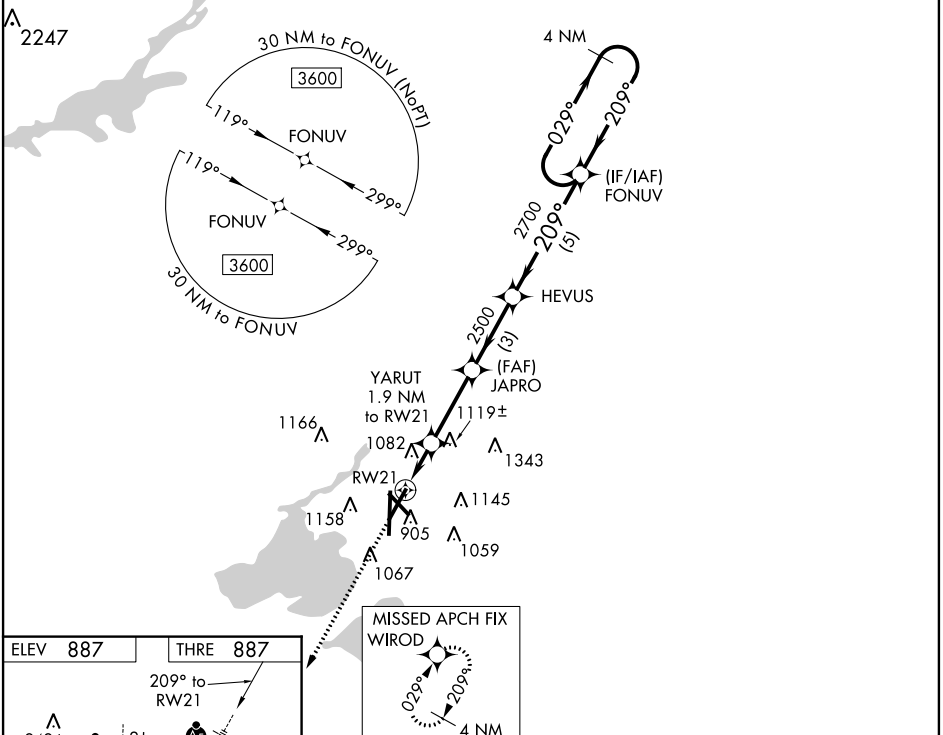
MADISON/DANE COUNTY RGNL-TRUAX FIELD (MSN)

ASR For uncompensated Baro-VNAV systems, LNAV/VNAV NA below -25°C (-13°F) or above 38°C (100°F). DME/DME RNP-0.3 NA. For inoperative MALSR, increase LNAV/VNAV all Cats visibility to 1½ mile and LNAV Cat C/D visibility to 1½ mile.

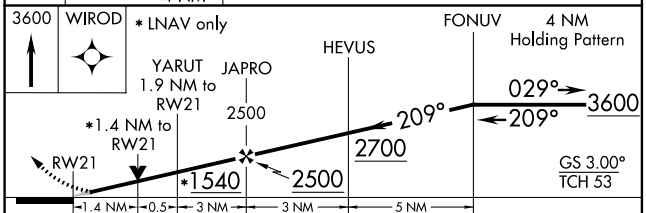
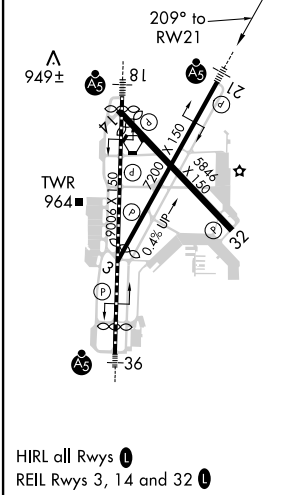


MALSR
MISSED APPROACH:
Climb to 3600 direct
WIROD and hold.

ATIS 124.65 278.3	MADISON APP CON* 135.45 343.7	MADISON TOWER* 119.3 (CTAF) 257.8	GND CON 121.9 348.6	CLNC DEL 121.62	UNICOM 122.95
-----------------------------	---	---	-------------------------------	---------------------------	-------------------------



ELEV 887	THRE 887
----------	----------



3600	WIROD	* LNAV only	FONUV	4 NM	Holding Pattern
↑	⬠	YARUT 1.9 NM to RW21	JAPRO	HEVUS	2700
←	←	* 1.4 NM to RW21	* 1540	2500	209° → 3600
←	←	←	←	←	← 209° ←
←	←	←	←	←	GS 3.00° TCH 53
←	←	←	←	←	←
CATEGORY	A	B	C	D	
LPV DA	1087-½		200 (200-½)		
LNAV/VNAV DA	1412-1⅓		525 (600-1⅓)		
LNAV MDA	1380-½		1380-1		493 (500-1)
CIRCLING	1420-1	1460-1	1460-1½	1460-2	
	533 (600-1)	573 (600-1)	573 (600-1½)	573 (600-2)	

EC-3, 07 FEB 2013 to 07 MAR 2013

EC-3, 07 FEB 2013 to 07 MAR 2013