

WAAS CH 42522 W18A	APP CRS 182°	Rwy ldg THRE 860 Apt Elev 887
--	------------------------	---

RNAV (GPS) RWY 18

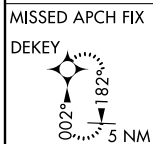
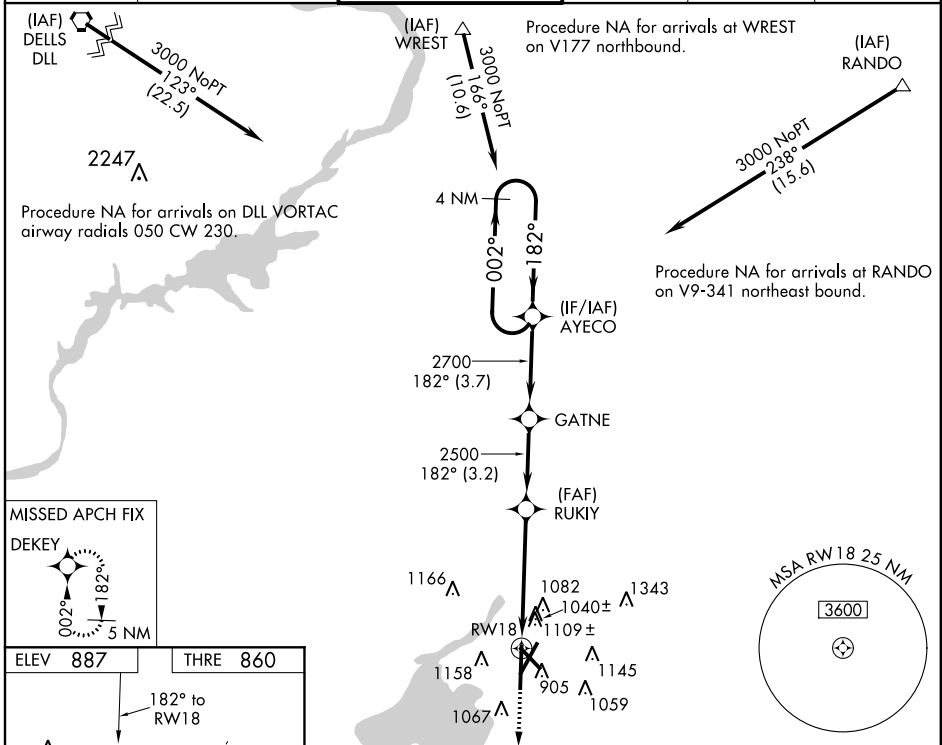
MADISON/DANE COUNTY RGNL-TRUAX FIELD (MSN)

⚠ For uncompensated Baro-VNAV systems, LNAV/VNAV NA below -16°C (4°F) or above 38°C (100°F). DME/DME RNP-0.3 NA. For inoperative MALSR, increase LNAV Cats C and D visibility to 1½ miles.

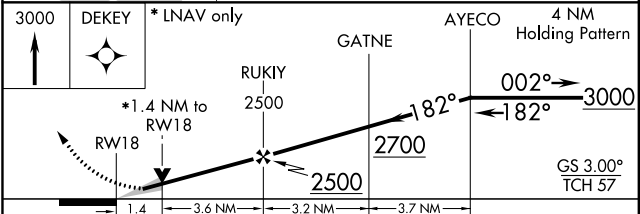
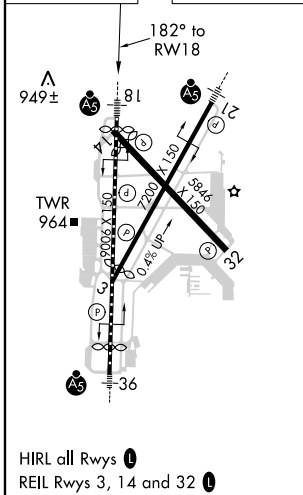


MISSED APPROACH: Climb to 3000 direct DEKEY and hold.

ATIS 124.65 278.3	MADISON APP CON * 135.45 343.7	MADISON TOWER * 119.3 (CTAF) 0 257.8	GND CON 121.9 348.6	CLNC DEL 121.62	UNICOM 122.95
-----------------------------	--	--	-------------------------------	---------------------------	-------------------------



ELEV 887	THRE 860
----------	----------



CATEGORY	A	B	C	D
LPV DA	1060/24		200 (200-½)	
LNAV/VNAV DA	1355/60		495 (500-1¼)	
LNAV MDA	1360/24	500 (500-½)	1360/50	500 (500-1)
CIRCLING	1420-1 533 (600-1)	1460-1 573 (600-1)	1460-1½ 573 (600-1½)	1460-2 573 (600-2)

RNAV (GPS) RWY 18

EC-3, 07 FEB 2013 to 07 MAR 2013

EC-3, 07 FEB 2013 to 07 MAR 2013