

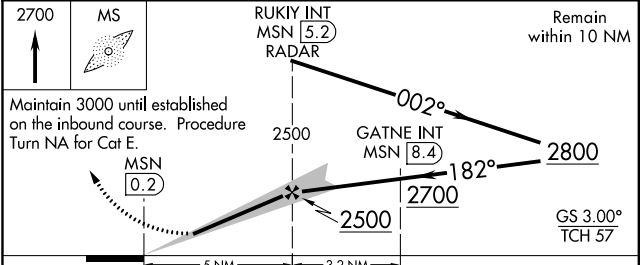
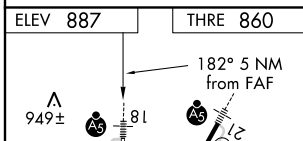
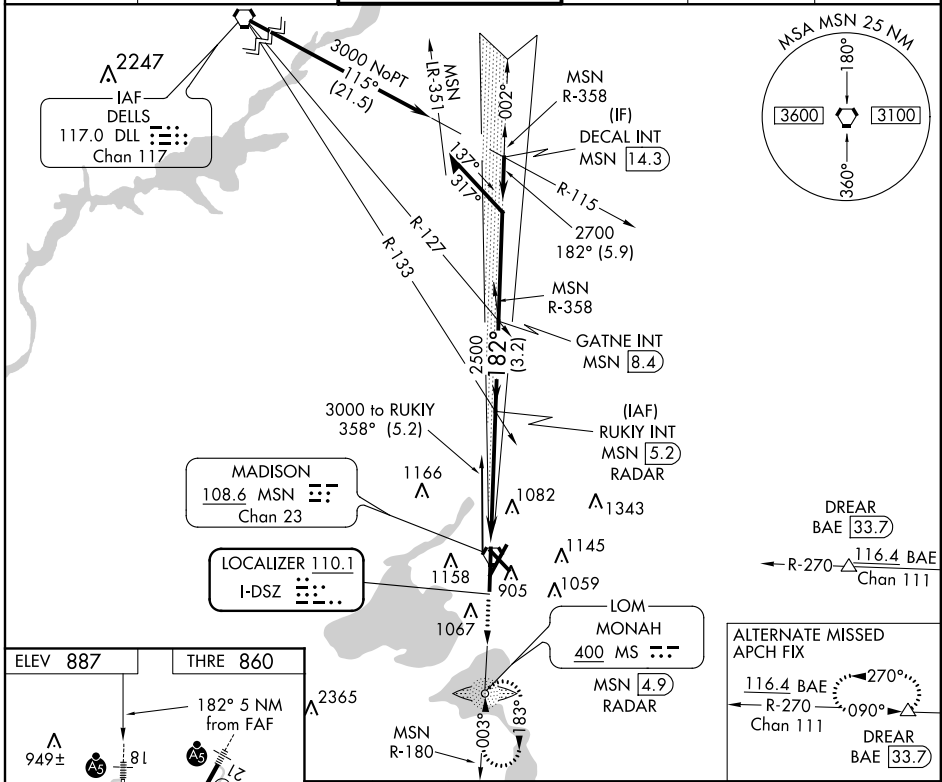
LOC I-DSZ 110.1	APP CRS 182°	Rwy Idg 8606
		THRE 860
		Apt Elev 887

ILS or LOC/DME RWY 18

MADISON / DANE COUNTY RGNL-TRUAX FIELD (MSN)

	**RVR 1800 authorized with use of FD or AP or HUD to DA. For inoperative MALSRR, increase S-LOC 18 Cats C, D and E visibility to 1 3/8 miles. ADF or Radar required. MSN DME required for procedure turn.	MALSRR 	MISSED APPROACH: Climb to 2700 direct MONAH LOM/MSN 4.9 DME/RADAR and hold.
--	--	------------	---

ATIS 124.65 278.3	MADISON APP CON * 135.45 343.7	MADISON TOWER * 119.3 (CTAF) 0 257.8	GND CON 121.9 348.6	CLNC DEL 121.62	UNICOM 122.95
-----------------------------	--	--	-------------------------------	---------------------------	-------------------------



CATEGORY	A	B	C	D	E
S-ILS 18		**1060/24	200 (200-1/2)		
S-LOC 18	1340/24	480 (500-1/2)	1340/50	480 (500-1)	
CIRCLING	1420-1	1460-1	1460-1 1/2	1460-2	1700-3
	533 (600-1)	573 (600-1)	573 (600-1 1/2)	573 (600-2)	813 (900-3)

EC-3, 07 FEB 2013 to 07 MAR 2013

EC-3, 07 FEB 2013 to 07 MAR 2013