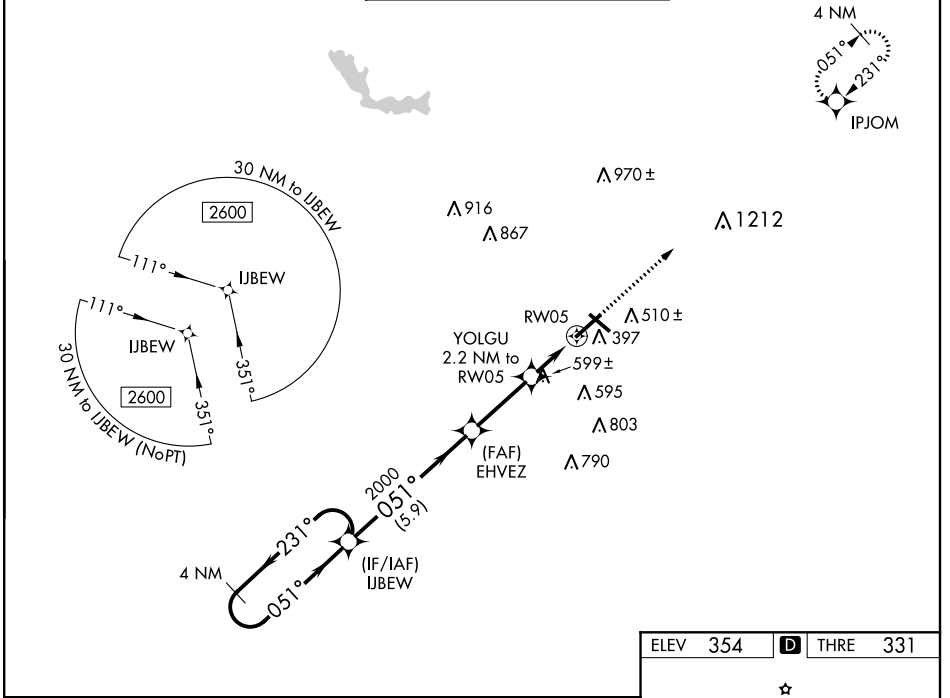


WAAS CH 97315 W05A	APP CRS 051°	Rwy Idg THRE 331 Apt Elev 354
--	------------------------	---

RNAV (GPS) RWY 5

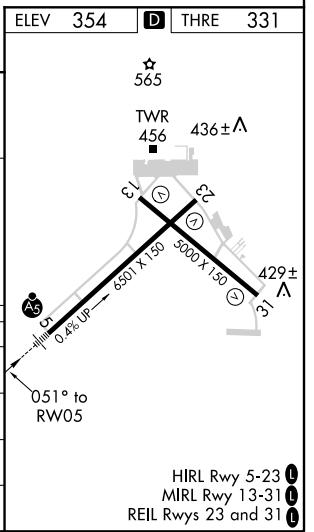
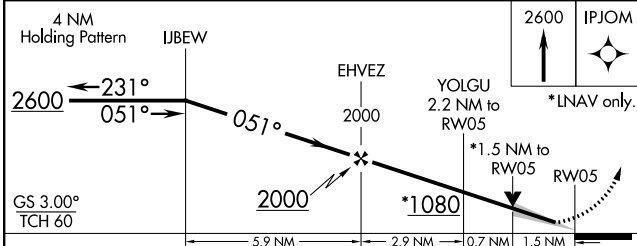
MACON/MIDDLE GEORGIA RGNL (MCN)

<p>⚠ When VGSI inop, Circling Rwy 13 and 31 NA at night. For uncompensated Baro-VNAV systems, LNAV/VNAV NA below -15°C (5°F) or above 41°C (105°F). DME/DME RNP-0.3 NA. For inop MALSR, increase LNAV Cats C and D visibility to 1½ miles.</p>		<p>MALSR</p>	<p>MISSED APPROACH: Climb to 2600 direct IPJOM and hold.</p>	
<p>ATIS 120.775</p>	<p>ATLANTA APP CON ★ 124.2 279.6</p>	<p>MACON TOWER ★ 128.2 (CTAF) 257.8</p>	<p>GND CON 121.65</p>	<p>UNICOM 122.95</p>



SE-4, 07 FEB 2013 to 07 MAR 2013

SE-4, 07 FEB 2013 to 07 MAR 2013



CATEGORY	A	B	C	D
LPV DA		531/24	200 (200-½)	
LNAV/VNAV DA		581/24	250 (300-½)	
LNAV MDA	860/24	529 (600-½)	860/55	529 (600-¼)
CIRCLING	880-1	526 (600-1)	900-1½ 546 (600-1½)	960-2 606 (700-2)

HIRL Rwy 5-23
MIRL Rwy 13-31
REIL Rwy 23 and 31