

LOC I-MCN 109.5	APP CRS 051°	Rwy Idg 6221 THRE 331 Apt Elev 354
---------------------------	------------------------	--

ILS or LOC/DME RWY 5

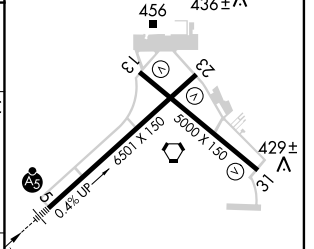
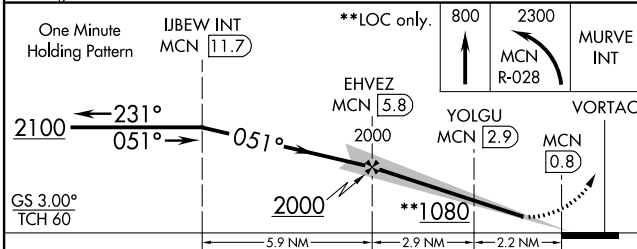
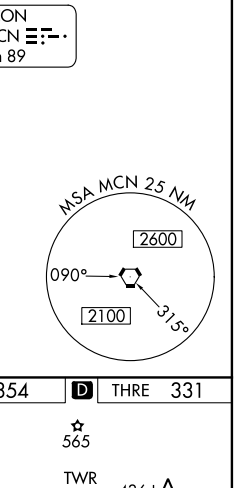
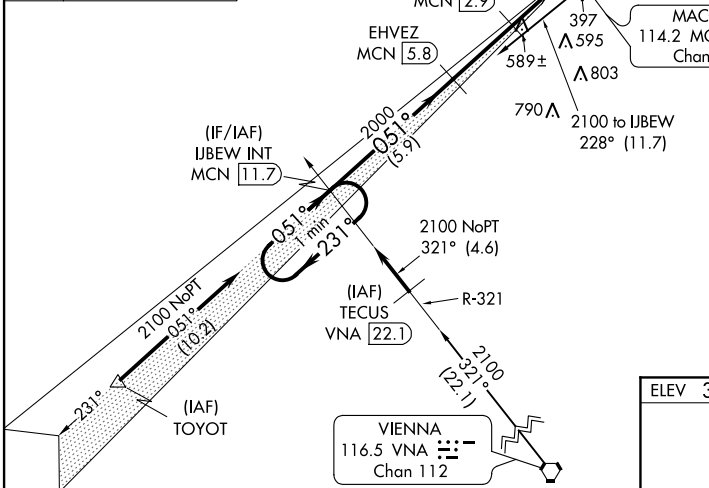
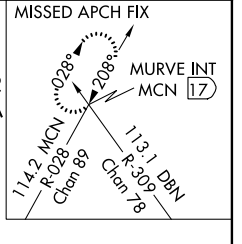
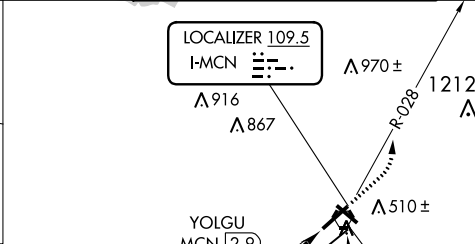
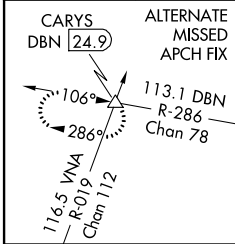
MACON/MIDDLE GEORGIA RGNL (MCN)

⚠ When VGSI inop, Circling Rwy 13 and 31 NA at night. DME from MCN VORTAC. Simultaneous reception of I-MCN and MCN DME required.
⚠ * Cat A/B/C/D RVR 1800 authorized with the use of FD or AP or HUD to DA. For inop MALSRL, increase S-ILS 5 Cat E visibility to RVR 4000 and S-LOC 5 Cats C/D/E visibility to 1 3/8 miles.

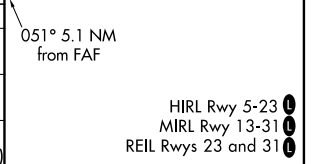


MISSED APPROACH: Climb to 800 then climbing left turn to 2300 on MCN VORTAC R-028 to MURVE INT/MCN 17 DME and hold.

ATIS 120.775	ATLANTA APP CON * 124.2 279.6	MACON TOWER * 128.2(CTAF) 257.8	GND CON 121.65	UNICOM 122.95
------------------------	---	---	--------------------------	-------------------------



CATEGORY	A	B	C	D	E
S-ILS 5	*531/24		200 (200-1/2)		531/24 200 (200-1/2)
S-LOC 5	840/24	509 (500-1/2)	840/55		509 (500-1/4)
CIRCLING	880-1	526 (600-1)	900-1 1/2 546 (600-1/2)	960-2 606 (700-2)	1120-2 3/4 766 (800-2 3/4)



SE-4, 07 FEB 2013 to 07 MAR 2013

SE-4, 07 FEB 2013 to 07 MAR 2013