

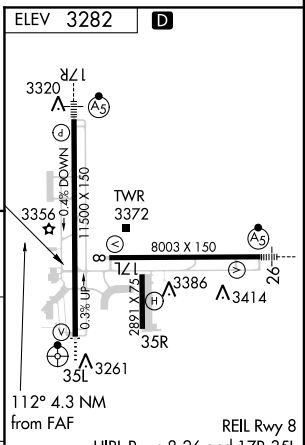
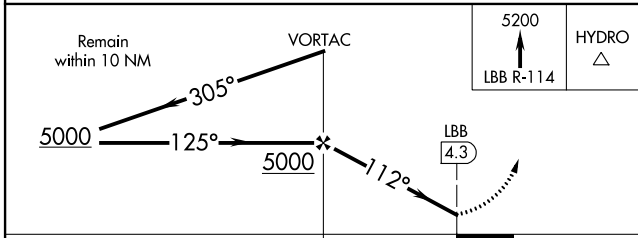
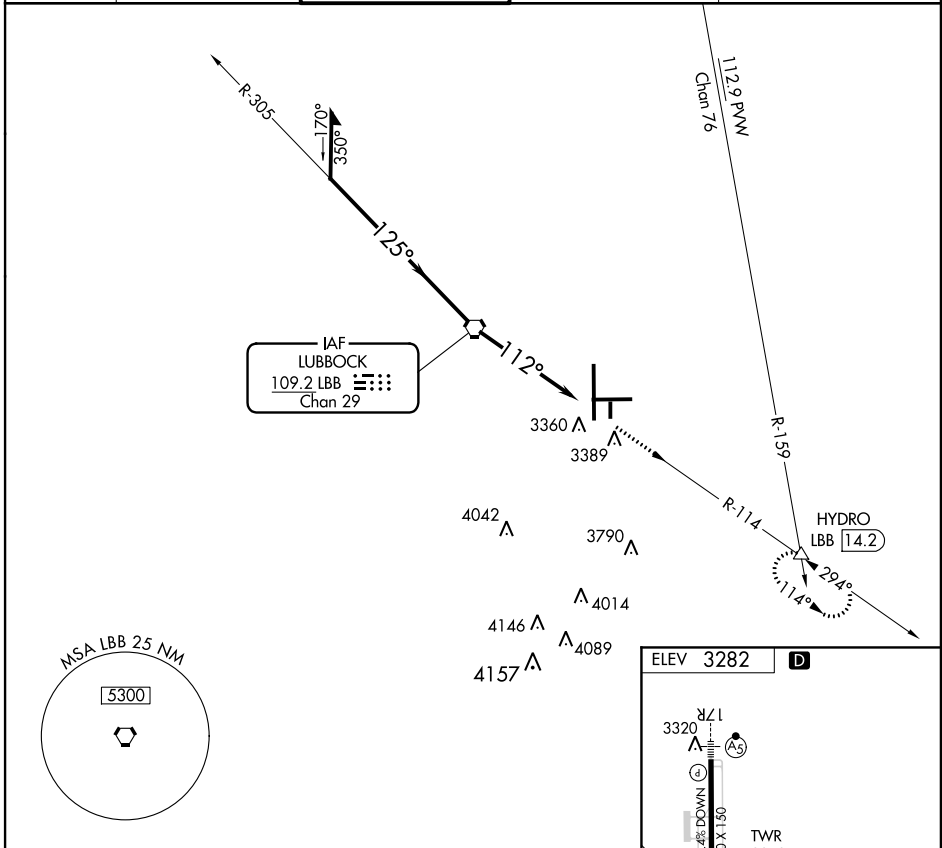
VOR LBB 109.2 Chan 29	APP CRS 112°	Rwy Idg TDZE Apt Elev	N/A N/A 3282
------------------------------------	------------------------	-----------------------------	---

VOR-A

LUBBOCK PRESTON SMITH INTL (LBB)

ASR	MISSED APPROACH: Climb to 5200 via LBB R-114 to HYDRO Int and hold.			
-----	---	--	--	--

ATIS 125.3	LUBBOCK APP CON 119.2 351.8	LUBBOCK TOWER 120.5 239.3	GND CON 121.9 348.6	CLNC DEL 125.8 281.55
----------------------	---------------------------------------	-------------------------------------	-------------------------------	---------------------------------



CATEGORY	A	B	C	D	FAF to MAP 4.3 NM					
CIRCLING	3720-1 438 (500-1)	3740-1 458 (500-1)	3740-1½ 458 (500-1½)	3840-2 558 (600-2)	Knots	60	90	120	150	180
					Min:Sec	4:18	2:52	2:09	1:43	1:26

VOR-A

SC-2, 07 FEB 2013 to 07 MAR 2013

SC-2, 07 FEB 2013 to 07 MAR 2013