

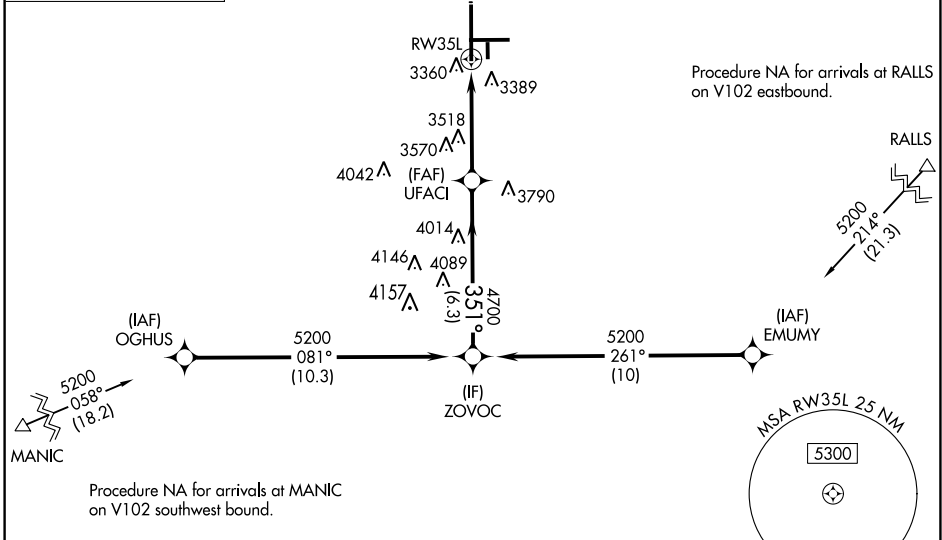
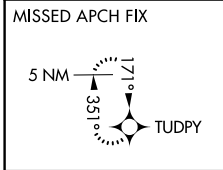
WAAAS CH 50128 W35A	APP CRS 351°	Rwy Idg 11500 TDZE 3254 Apt Elev 3282
---	------------------------	---

RNAV (GPS) Y RWY 35L

LUBBOCK PRESTON SMITH INTL (LBB)

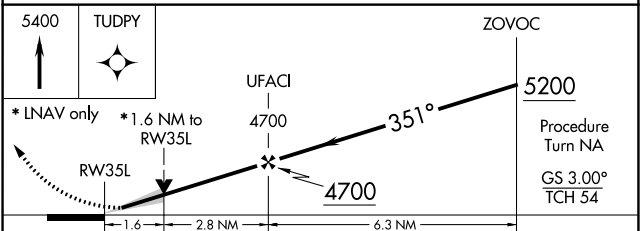
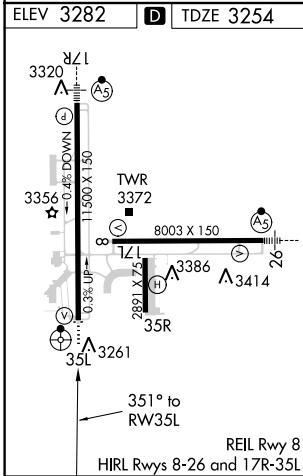
	Inoperative table does not apply to LPV, LNAV/VNAV all Cats and LNAV Cat C. DME/DME RNP-0.3 NA. For uncompensated Baro-VNAV systems, LNAV/VNAV NA below -21°C (-5°F) or above 42°C (107°F).		MISSED APPROACH: Climb to 5400 direct TUDPY and hold.

ATIS 125.3	LUBBOCK APP CON 119.2 351.8	LUBBOCK TOWER 120.5 239.3	GND CON 121.9 348.6	CLNC DEL 125.8 281.55
----------------------	---------------------------------------	-------------------------------------	-------------------------------	---------------------------------



SC-2, 07 FEB 2013 to 07 MAR 2013

SC-2, 07 FEB 2013 to 07 MAR 2013



CATEGORY	A	B	C	D	E
LPV DA	3454-3/4 200 (200-3/4)				
LNAV/VNAV DA	3673-1 1/2 419 (400-1 1/2)				
LNAV MDA	3820-3/4	566 (600-3/4)	3820-1 1/2 566 (600-1 1/2)	3820-1 3/4 566 (600-1 3/4)	3820-2 566 (600-2)
CIRCLING	3820-1	538 (600-1)	3820-1 1/2 538 (600-1 1/2)	3840-2 558 (600-2)	3980-2 1/2 698 (700-2 1/2)