

LUBBOCK, TEXAS

AL-241 (FAA)

13010

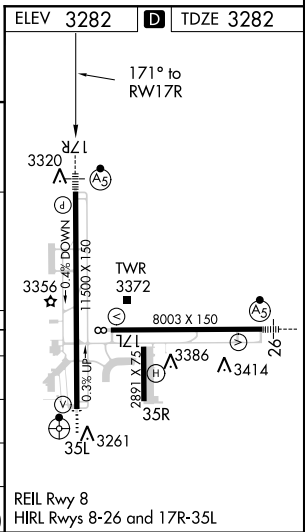
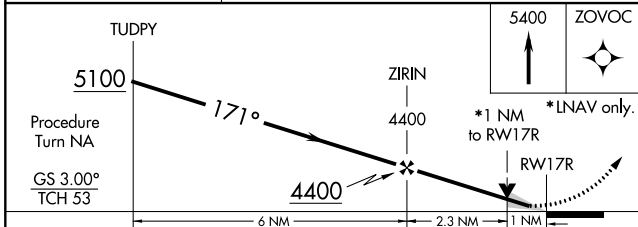
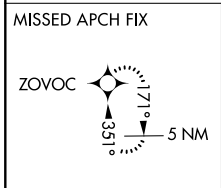
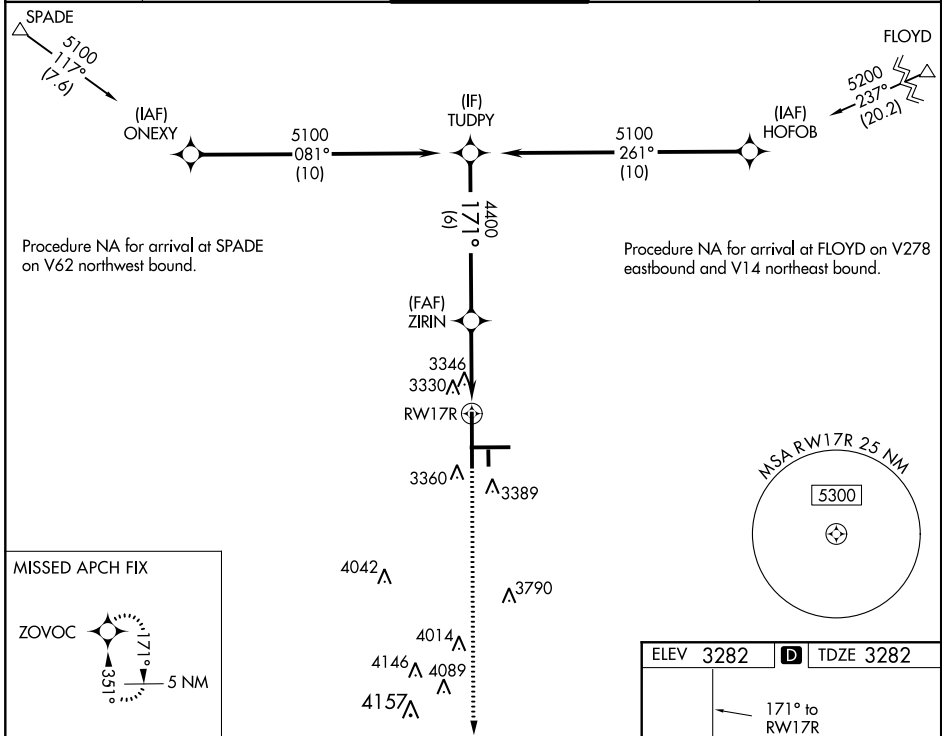
WAAS CH <b>40028</b> <b>W17A</b>	APP CRS <b>171°</b>	Rwy Idg TDZE <b>3282</b> Apt Elev <b>3282</b>	<b>11500</b>
--	------------------------	---	--------------

# RNAV (GPS) Y RWY 17R

LUBBOCK PRESTON SMITH INTL (LBB)

<b>ASR</b>	DME/DME RNP-0.3 NA. For inoperative MALSR increase LPV Cat E visibility to RVR 4000, LNAV/VNAV Cats D and E visibility to RVR 5000 and inop table does not apply to LNAV Cats D and E. For uncompensated Baro-VNAV systems, LNAV/VNAV NA below -21°C (-5°F) or above 41°C (105°F).	<b>MALSR</b>	<b>MISSED APPROACH:</b> Climb to 5400 direct ZOVOC and hold.
------------	--	--------------	---

ATIS <b>125.3</b>	LUBBOCK APP CON <b>119.2 351.8</b>	LUBBOCK TOWER <b>120.5 239.3</b>	GND CON <b>121.9 348.6</b>	CLNC DEL <b>125.8 281.55</b>
----------------------	---------------------------------------	-------------------------------------	-------------------------------	---------------------------------



CATEGORY	A	B	C	D	E
LPV DA	3482/24		200 (200-½)		
LNAV/VNAV DA	3591/24	309 (400-½)		3591/40	309 (400-¾)
LNAV MDA	3600/24	318 (400-½)		3600/50	318 (400-1)
CIRCLING	3720-1 438 (500-1)	3740-1 458 (500-1)	3740-1½ 458 (500-1½)	3840-2 558 (600-2)	3980-2½ 698 (700-2½)

REIL Rwy 8  
HIRL Rwy 8-26 and 17R-35L

SC-2, 07 FEB 2013 to 07 MAR 2013

SC-2, 07 FEB 2013 to 07 MAR 2013

LUBBOCK, TEXAS  
Amdt 2 10JAN13

33°40' N-101°49' W

# LUBBOCK PRESTON SMITH INTL (LBB)

## RNAV (GPS) Y RWY 17R