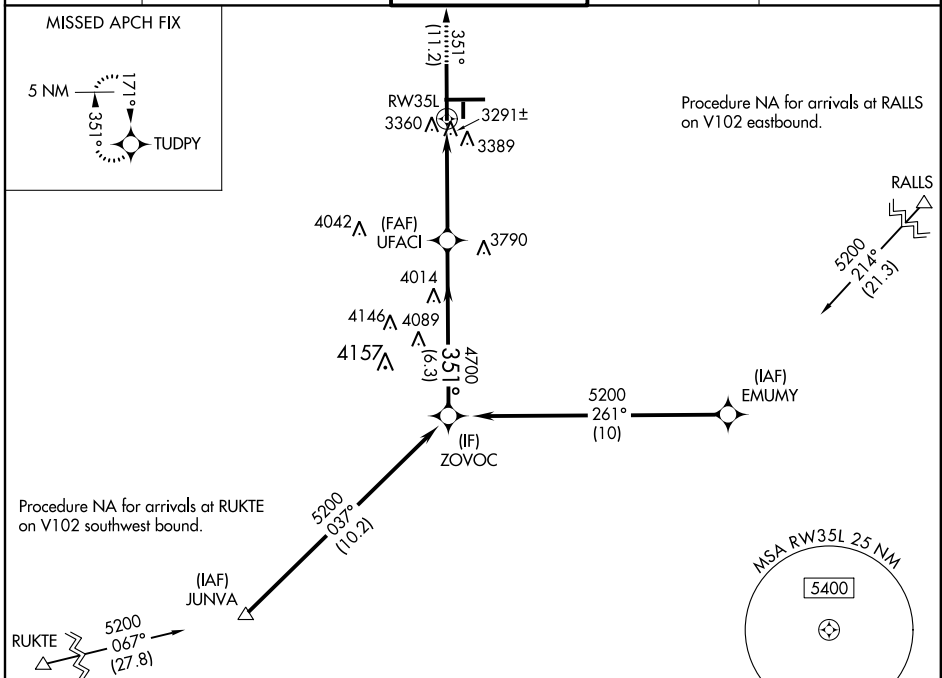


| | | |
|-------------|----------|--------------|
| APP CRS | Rwy ldg | 11500 |
| 351° | TDZE | 3254 |
| | Apt Elev | 3282 |

RNAV (RNP) Z RWY 35L

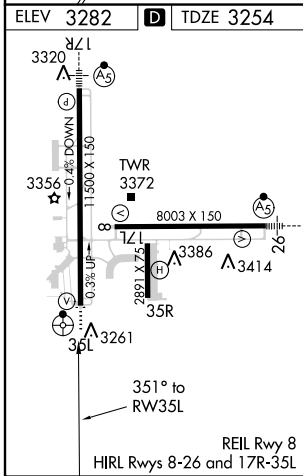
LUBBOCK PRESTON SMITH INTL (LBB)

| | | | | | | |
|-----|---|--------------------|--------------------|--------------------|---------------------|---|
| ASR | * Missed approach requires a minimum climb of 425 feet per NM to 5400. GPS Required. For uncompensated Baro-VNAV systems, procedure NA below -12°C (10°F) or above 42°C (108°F). For inoperative ODALS, increase RNP 0.18 and RNP 0.30* Cats A, B, and C visibility to 1 mile. When VGSI inop, RNP 0.18 NA. | | | | ODALS | MISSED APPROACH: Climb to 5400 on track 351° to TUDPY and hold. |
| | ATIS | LUBBOCK APP CON | LUBBOCK TOWER | GND CON | CLNC DEL | |
| | 125.3 | 119.2 351.8 | 120.5 239.3 | 121.9 348.6 | 125.8 281.55 | |



SC-2, 07 FEB 2013 to 07 MAR 2013

SC-2, 07 FEB 2013 to 07 MAR 2013



| | | |
|---------|--------|-------------------|
| 5400 | TUDPY | ZOVOC |
| ↑ | ✧ | 5200 |
| tr 351° | | Procedure Turn NA |
| RW35L | UFACI | GP 3.00° TCH 54 |
| 4.4 NM | 6.3 NM | |
| 351° | 4700 | |

| CATEGORY | A | B | C | D |
|---------------|----------------------------|---------------|---|-----------------------|
| RNP 0.18 DA | 3557-3/4 | 303 (300-3/4) | | 3557-1 303 (300-1) |
| RNP 0.30 DA * | 3572-3/4 | 318 (300-3/4) | | 3572-1 318 (300-1) |
| RNP 0.30 DA | 3610-1 1/4 356 (400-1 1/4) | | | |

AUTHORIZATION REQUIRED