

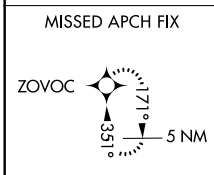
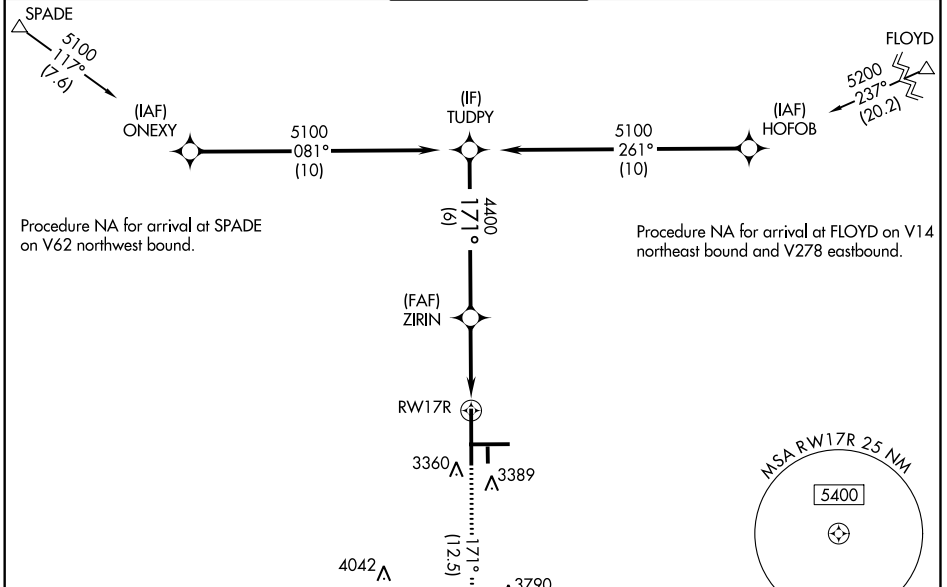
APP CRS	Rwy Idg	11500
171°	TDZE	3282
	Apt Elev	3282

RNAV (RNP) Z RWY 17R

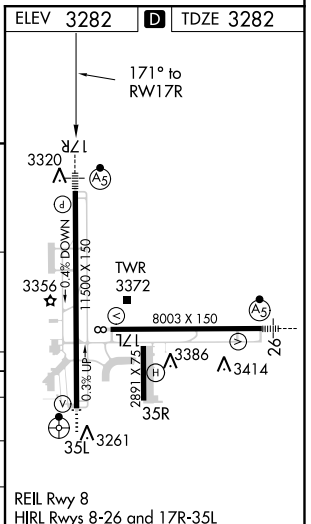
LUBBOCK PRESTON SMITH INTL (LBB)

ASR	GPS Required. For uncompensated Baro-VNAV systems, procedure NA below -12°C (10°F) or above 41°C (106°F). For inoperative MALSR, increase RNP 0.16 all Cats visibility to RVR 4000 and RNP 0.30 all Cats visibility to RVR 5000.	MALSR	MISSED APPROACH: Climb to 5400 on track 171° to ZOVOC and hold.

ATIS	LUBBOCK APP CON	LUBBOCK TOWER	GND CON	CLNC DEL
125.3	119.2 351.8	120.5 239.3	121.9 348.6	125.8 281.55



TUDPY	5100	ZIRIN	4400	RW17R
	Procedure Turn NA		GP 3.00° TCH 53	
CATEGORY	A	B	C	D
RNP 0.16 DA		3538/24	256 (300-½)	
RNP 0.30 DA		3589/24	307 (400-½)	



AUTHORIZATION REQUIRED

REIL Rwy 8
HIRL Rwy 8-26 and 17R-35L

SC-2, 07 FEB 2013 to 07 MAR 2013

SC-2, 07 FEB 2013 to 07 MAR 2013