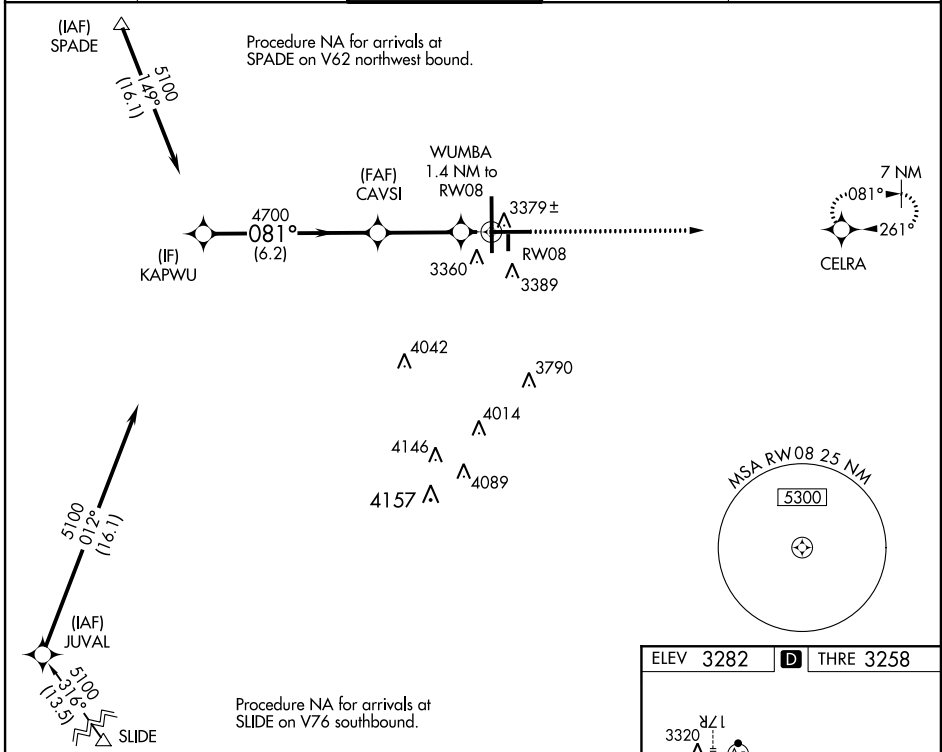


WAAS CH 97327 W08A	APP CRS 081°	Rwy Idg THRE Apt Elev 8001 3258 3282
--	------------------------	--

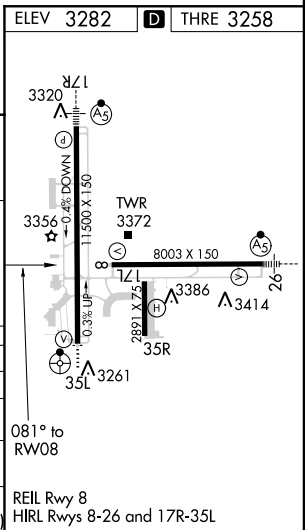
RNAV (GPS) RWY 8
LUBBOCK PRESTON SMITH INTL (LBB)

▲ For uncompensated Baro-VNAV systems, LNAV/VNAV NA below -11°C (13°F) or above 23°C (73°F).
▲ DME/DME RNP-0.3 NA.
MISSED APPROACH: Climb to 5000 direct CELRA and hold.

ATIS 125.3	LUBBOCK APP CON 119.2 351.8	LUBBOCK TOWER 120.5 239.3	GND CON 121.9 348.6	CLNC DEL 125.8 281.55
----------------------	---------------------------------------	--	-------------------------------	---------------------------------



KAPWU		* LNAV only.		5000	CELRA
5100		CAVSI 4700		↑	✧
GS 3.00° TCH 50		WUMBA 1.4 NM to RW08			
6.2 NM		3 NM		1.4 NM	
CATEGORY	A	B	C	D	E
LPV DA	3458- ³ / ₄		200 (200- ³ / ₄)		
LNAV/VNAV DA	3540- ⁷ / ₈		282 (300- ⁷ / ₈)		
LNAV MDA	3640-1	382 (400-1)	3640-1 ¹ / ₈	382 (400-1 ¹ / ₈)	
CIRCLING	3720-1 438 (500-1)	3740-1 458 (500-1)	3740-1 ¹ / ₂ 458 (500-1 ¹ / ₂)	3840-2 558 (600-2)	3980-2 ¹ / ₂ 698 (700-2 ¹ / ₂)



SC-2, 07 FEB 2013 to 07 MAR 2013

SC-2, 07 FEB 2013 to 07 MAR 2013