


WAAS CH <b>45528</b> <b>W26A</b>	APP CRS <b>261°</b>	Rwy Idg THRE Apt Elev	<b>8001</b> <b>3253</b> <b>3282</b>
--	------------------------	-----------------------------	---

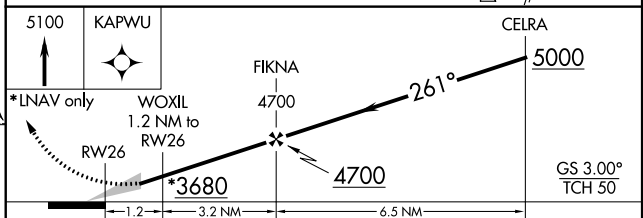
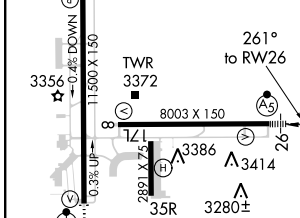
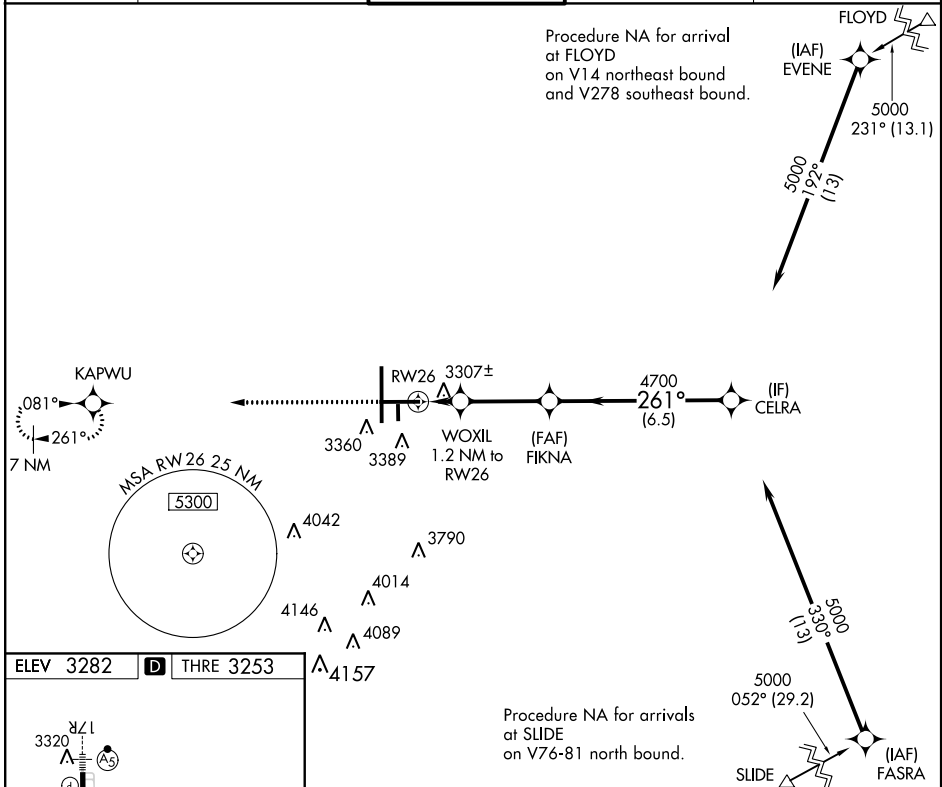
# RNAV (GPS) RWY 26

LUBBOCK PRESTON SMITH INTL (LBB)

**▲** For uncompensated Baro-VNAV systems, LNAV/VNAV NA below -11°C (13°F) or above 23°C (73°F). DME/DME RNP-0.3 NA. For inop MALSR, increase ASR LNAV/VNAV all Cats visibility to 7/8 mile.

**MALSR**  **MISSED APPROACH:** Climb to 5100 direct KAPWU and hold.

ATIS <b>125.3</b>	LUBBOCK APP CON <b>119.2 351.8</b>	LUBBOCK TOWER <b>120.5 239.3</b>	GND CON <b>121.9 348.6</b>	CLNC DEL <b>125.8 281.55</b>
----------------------	---------------------------------------	-------------------------------------	-------------------------------	---------------------------------



CATEGORY	A	B	C	D	E
LPV DA		3453/24	200 (200-1/2)		
LNAV/VNAV DA		3536/24	283 (300-1/2)		
LNAV MDA		3560/24	307 (300-1/2)		
CIRCLING	3720-1 438 (500-1)	3740-1 458 (500-1)	3740-1 1/2 458 (500-1 1/2)	3840-2 558 (600-2)	3980-2 1/2 698 (700-2 1/2)

SC-2, 07 FEB 2013 to 07 MAR 2013

SC-2, 07 FEB 2013 to 07 MAR 2013