

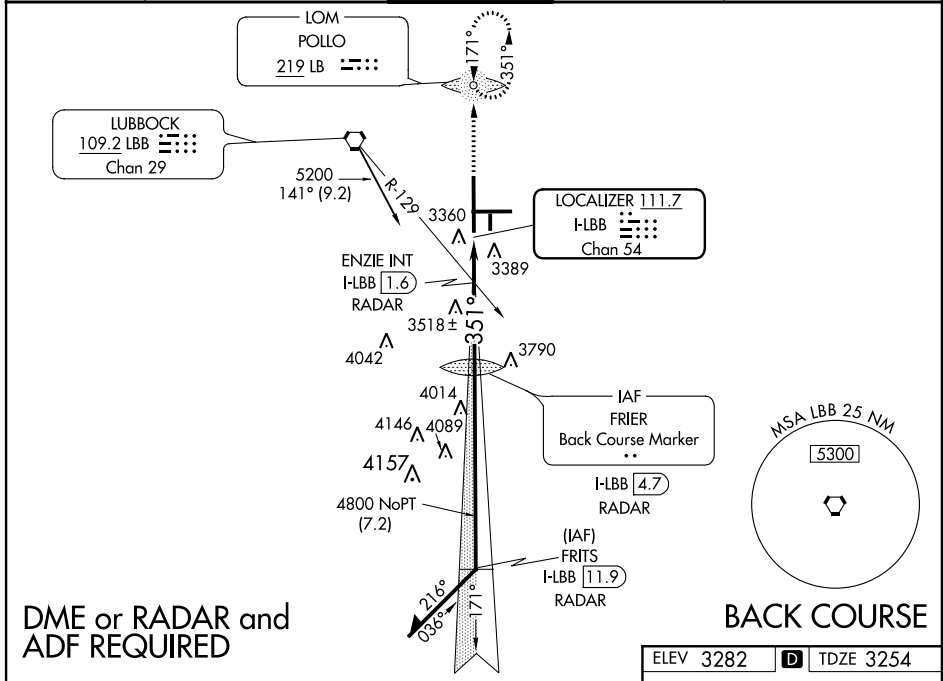
LOC I-LBB <b>111.7</b> Chan <b>54</b>	APP CRS <b>351°</b>	Rwy Idg <b>11500</b> TDZE <b>3254</b> Apt Elev <b>3282</b>
---	------------------------	--

# LOC BC RWY 35L

LUBBOCK PRESTON SMITH INTL (LBB)

ASR Inoperative table does not apply to S-LOC 35L Cat C visibility (without ENZIE Fix).	ODALS .....	MISSED APPROACH: Climb to 5000 direct POLLO LOM and hold.
--	----------------	---

ATIS <b>125.3</b>	LUBBOCK APP CON <b>119.2 351.8</b>	LUBBOCK TOWER <b>120.5 239.3</b>	GND CON <b>121.9 348.6</b>	CLNC DEL <b>125.8 281.55</b>
----------------------	---------------------------------------	-------------------------------------	-------------------------------	---------------------------------



SC-2, 07 FEB 2013 to 07 MAR 2013

SC-2, 07 FEB 2013 to 07 MAR 2013

5000	LB	FRIER BCM I-LBB [4.7] RADAR	Remain within 10 NM	
ENZIE INT I-LBB [1.6] RADAR	FRITS I-LBB [11.9] RADAR	5200	Disregard glide slope indication.	
I-LBB [0.5]	2.90° TCH 54	4800		
0.7	1.1	3.1 NM	7.2 NM	
CATEGORY	A	B	C	D
S-LOC 35L	3820-3/4	566 (600-3/4)	3820-1 1/2 566 (600-1 1/2)	3820-1 3/4 566 (600-1 3/4)
CIRCLING	3820-1	538 (600-1)	3820-1 1/2 538 (600-1 1/2)	3840-2 558 (600-2)
ENZIE FIX MINIMUMS				
S-LOC 35L	3560-3/4 306 (300-3/4)		3560-1 306 (300-1)	
CIRCLING	3720-1 438 (500-1)	3740-1 458 (500-1)	3740-1 1/2 458 (500-1 1/2)	3840-2 558 (600-2)

