

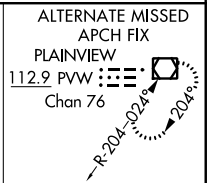
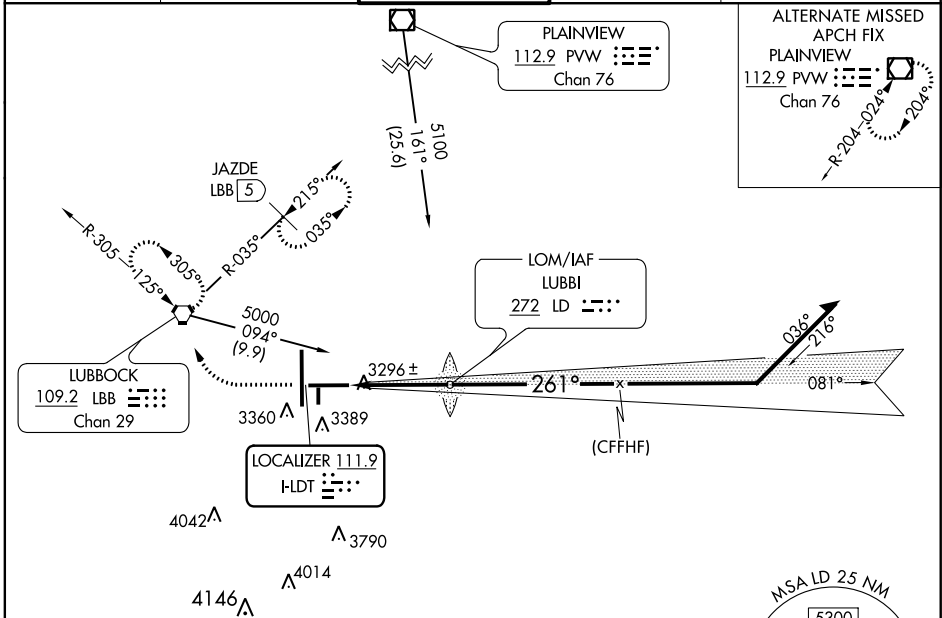
LOC HDT 111.9	APP CRS 261°	Rwy Idg 8001 THRE 3253 Apt Elev 3282
-------------------------	------------------------	--

ILS or LOC RWY 26
LUBBOCK PRESTON SMITH INTL (LBB)

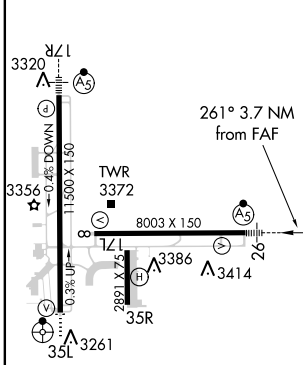
ASR **RVR 1800 authorized with use of FD or AP or HUD to DA. For inop MALSRL, increase S-ILS 26 Cat E visibility to RVR 4000 and increase S-LOC 26 Cat E visibility to RVR 5000.

MALSRL
MISSED APPROACH: Climb to 3800 then climbing right turn to 4800 direct LBB VORTAC and hold (TACAN aircraft climb to 3800 then climbing right turn to 5100 on heading 300° and on LBB VORTAC R-035 to JAZDE/LBB 5 DME and hold northeast left turn 215° inbound).

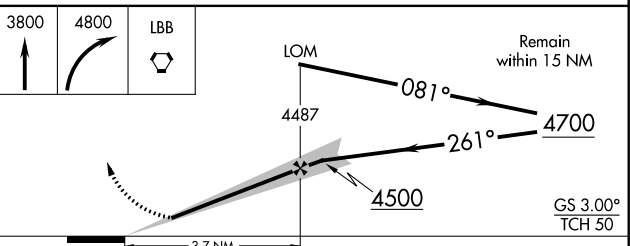
ATIS 125.3	LUBBOCK APP CON 119.2 351.8	LUBBOCK TOWER 120.5 239.3	GND CON 121.9 348.6	CLNC DEL 125.8 281.55
----------------------	---------------------------------------	-------------------------------------	-------------------------------	---------------------------------



ELEV 3282	D THRE 3253
-----------	--------------------



ADF OR RADAR REQUIRED



REIL Rwy 8
HIRL Rwy 8-26 and 17R-35L
FAF to MAP 3.7 NM

Knots	60	90	120	150	180
Min:Sec	3:42	2:28	1:51	1:29	1:14

CATEGORY	A	B	C	D	E
S-ILS 26**	3453/24 200 (200-½)				
S-LOC 26	3560/24 307 (300-½)				
CIRCLING	3720-1 438 (500-1)	3740-1 458 (500-1)	3740-1½ 458 (500-1½)	3840-2 558 (600-2)	3980-2½ 698 (700-2½)

SC-2, 07 FEB 2013 to 07 MAR 2013

SC-2, 07 FEB 2013 to 07 MAR 2013