

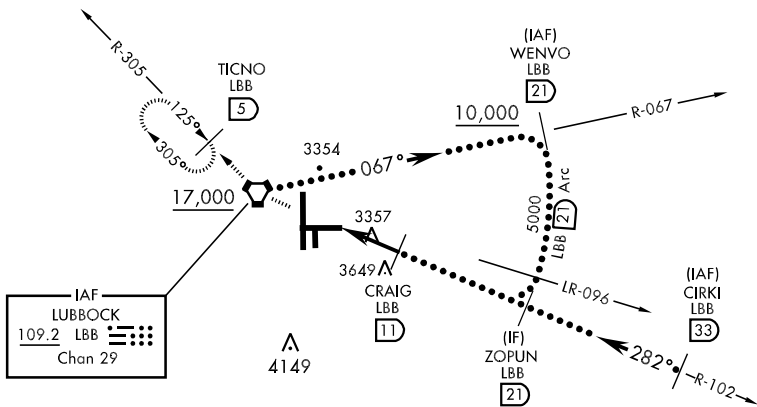
HI-VOR/DME or TACAN RWY 26

VORTAC LBB 109.2 Chan 29	APCH CRS 282°	Rwy Idg THRE Arprt Elev 8003 3253 3282
--	-------------------------	--

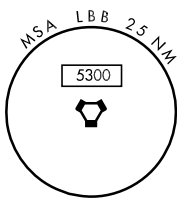
JAL-241 [USAF] LUBBOCK PRESTON SMITH INTL (KLBB)

<p>▼ * Inoperative Table does not apply.</p>	<p>MALSR A5</p>	<p>MISSED APPROACH: Climb and maintain 5100 direct LBB VORTAC and via LBB R-305 to TICNO (LBB 5 DME) and hold.</p>

ATIS 125.3	LUBBOCK APP CON 119.2 351.8	LUBBOCK TOWER 120.5 239.3	GND CON 121.9 348.6	CLNC DEL 125.8 281.55
----------------------	---------------------------------------	-------------------------------------	-------------------------------	---------------------------------



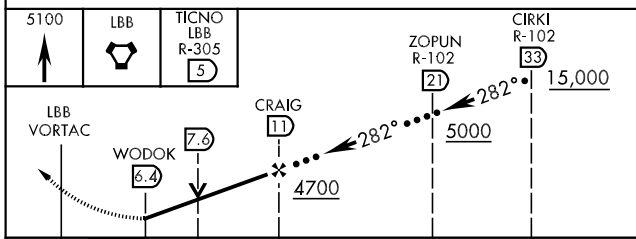
IAF
LUBBOCK
109.2 LBB
Chan 29



RADAR REQUIRED

(For entry at CIRKI)

EMERG SAFE ALT 100 NM 7300



5100	LBB	TICNO LBB R-305	ZOPUN R-102	CIRKI R-102												
↑	⬢	5	21	33												
<table border="1"> <tr> <td>CATEGORY</td> <td>C</td> <td>D</td> <td>E</td> </tr> <tr> <td>S-26 *</td> <td>3680-1¼</td> <td>427</td> <td>(400-1¼)</td> </tr> <tr> <td>CIRCLING</td> <td>3740-1½ 458 (500-1½)</td> <td>3840-2 558 (600-2)</td> <td>3980-2½ 698 (700-2½)</td> </tr> </table>					CATEGORY	C	D	E	S-26 *	3680-1¼	427	(400-1¼)	CIRCLING	3740-1½ 458 (500-1½)	3840-2 558 (600-2)	3980-2½ 698 (700-2½)
CATEGORY	C	D	E													
S-26 *	3680-1¼	427	(400-1¼)													
CIRCLING	3740-1½ 458 (500-1½)	3840-2 558 (600-2)	3980-2½ 698 (700-2½)													

ELEV 3282	THRE 3253
-----------	-----------

REIL Rwy 8
HIRL Rwy 8-26 and 17R-35L

HI-VOR/DME or TACAN RWY 26

SC-2, 07 FEB 2013 to 07 MAR 2013

SC-2, 07 FEB 2013 to 07 MAR 2013