

LUBBOCK, TEXAS

# HI-LOC/DME BC RWY 35L

LOC I-LBB <b>111.7</b> Chan <b>54</b>	APCH CRS <b>351°</b>	Rwy Idg <b>11,500</b> TDZE <b>3253</b> Arprt Elev <b>3282</b>
---------------------------------------------	-------------------------	---------------------------------------------------------------------

JAL-241 [USAF]

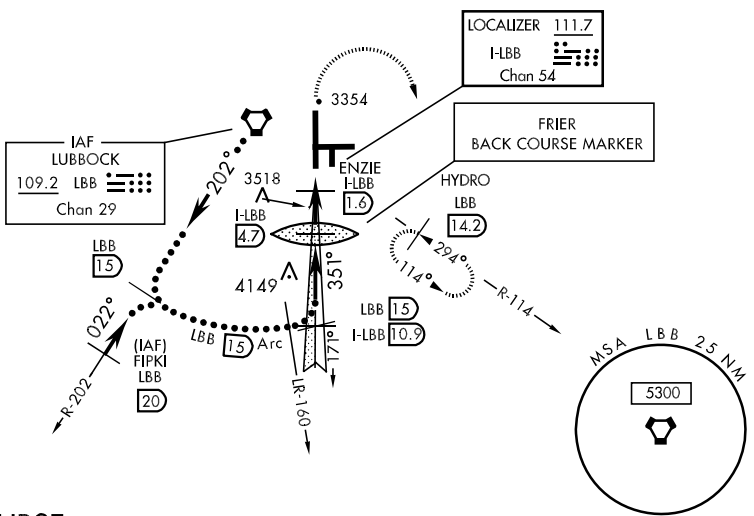
LUBBOCK PRESTON SMITH INTL (KLBB)

**V** \* When ALS inop, increase CAT C vis to 1 mile.  
Use I-LBB DME when on Localizer course



MISSED APPROACH: Climb to 4000, then climbing right turn to 5000 via Hdg 170° and LBB VORTAC R-114 to HYDRO INT (LBB 14.2 DME) and hold.

ATIS <b>125.3</b>	LUBBOCK APP CON <b>119.2 351.8</b>	LUBBOCK TOWER <b>120.5 239.3</b>	GND CON <b>121.9 348.6</b>	CLNC DEL <b>125.8 281.55</b>
----------------------	---------------------------------------	-------------------------------------	-------------------------------	---------------------------------

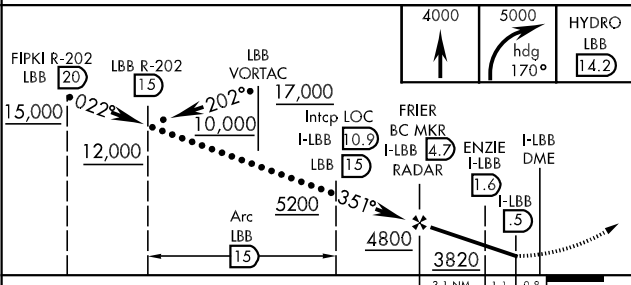


SC-2, 07 FEB 2013 to 07 MAR 2013

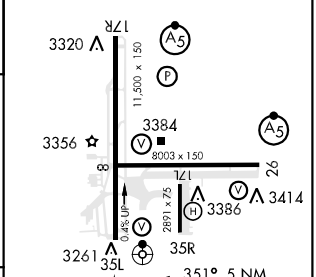
SC-2, 07 FEB 2013 to 07 MAR 2013

## BACKCOURSE

EMERG SAFE ALT 100 NM 7300



ELEV 3282	TDZE 3253
-----------	-----------



CATEGORY	C	D	E
s-35L *	3560-¾ 307 (300-¾)	3560-1	307 (300-1)
CIRCLING	3740-1½ 458 (500-1½)	3840-2 558 (600-2)	3980-2½ 698 (700-2½)

REIL Rwy 8	HIRL Rwy 8-26 and 17R-35L	FAF to MAP 4.2 NM			
Knots	120	140	160	180	200
Min:Sec	2:06	1:48	1:35	1:24	1:16

LUBBOCK, TEXAS  
Orig A 20SEP12

33°40'N-101°49'W

LUBBOCK PRESTON SMITH INTL (KLBB)

# HI-LOC/DME BC RWY 35L