

LUBBOCK, TEXAS

HI-ILS or LOC RWY 17R

LOC I-LBB 111.7 Chan 54	APCH CRS 171°	Rwy Idg 11,500 TDZE 3282 Arpt Elev 3282
---	-------------------------	--

JAL-241 [USAF]

LUBBOCK PRESTON SMITH INTL (KLBB)

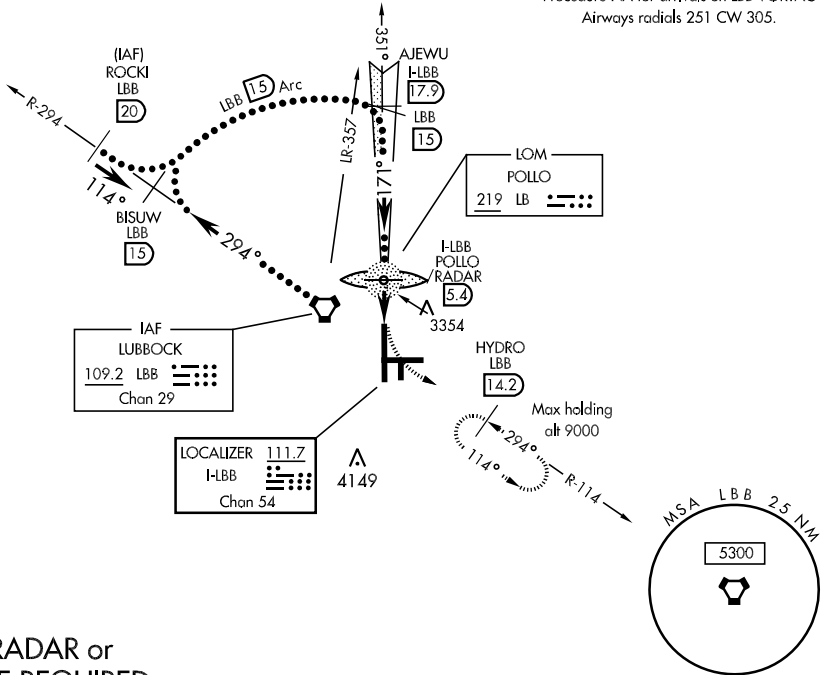
▼ * When ALS inop, increase RVR to 40 and vis to ¾ mile
 ** When ALS inop, increase CAT CD RVR to 50 and vis to 1 mile, CAT E RVR to 60 and vis to 1¼ miles.



MISSED APPROACH: Climb to 3700, then climbing left turn to 6000 via LBB VORTAC R-114 to HYDRO (LBB 14.2 DME) and hold, continue climb in hold to 6000.

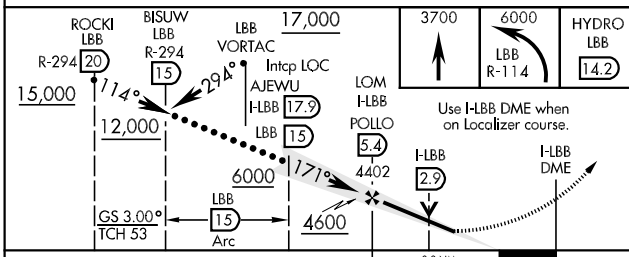
ATIS 125.3	LUBBOCK APP CON 119.2 351.8	LUBBOCK TOWER 120.5 239.3	GND CON 121.9 348.6	CLNC DEL 125.8 281.55
----------------------	---------------------------------------	-------------------------------------	-------------------------------	---------------------------------

Procedure NA for arrivals on LBB VORTAC
Airways radials 251 CW 305.



RADAR or DME REQUIRED

EMERG SAFE ALT 100 NM 7300



ELEV 3282	TDZE 3282
171° 3.3 NM from FAF	
REIL Rwy 8 HIRL Rwy 8-26 and 17R-35L	
FAF to MAP 3.3 NM	
Knots	120 140 160 180 200
Min:Sec	1:39 1:25 1:14 1:06 0:59

CATEGORY	C	D	E
S-ILS 17R *	3482/24	200 (200-½)	
S-LOC 17R **	3620/24 338 (400-½)	3620/40 338 (400-¾)	
CIRCLING	3740-1½ 458 (500-1½)	3840-2 558 (600-2)	3980-2½ 698 (700-2½)

LUBBOCK, TEXAS
Amdt 1 13010

33°40'N-101°49'W

LUBBOCK PRESTON SMITH INTL (KLBB)

HI-ILS or LOC RWY 17R

SC-2, 07 FEB 2013 to 07 MAR 2013

SC-2, 07 FEB 2013 to 07 MAR 2013